



BuildOmaha.org

2017

# Parade of HOMES

April 21 - May 7, 2017

PRESENTING SPONSOR



**METROPOLITAN**  
UTILITIES DISTRICT

COVER COURTESY

Advantage Development, Inc.

**Lets Build Omaha Together.**



A BETTER VIEW OF

# LUXURY



GET INSPIRED WITH EXCITING CUSTOM  
POSSIBILITIES FROM PELLA.

PELLA WINDOW & DOOR SHOWROOMS

[PellaOmaha.com](http://PellaOmaha.com)

OMAHA

9845 SOUTH 142<sup>ND</sup> STREET  
(402) 493-1350

LINCOLN

6891 A STREET SUITE 118  
(402) 484-5700





Proud Sponsor of the 2017 Parade of Homes

Enjoying the outdoors or indoors is best  
when choosing natural gas!  
Efficient, reliable, comfortable and clean.



**METROPOLITAN**  
UTILITIES DISTRICT

[mudomaha.com](http://mudomaha.com)







BuildOmaha.org

2017  
*Parade of*  
**HOMES**

*Parade of Homes Tour*  
*April 21 - May 7, 2017*

PAGE 4

*Homes Listed by Subdivision*

PAGE 5

*Map of Homes*

PAGE 7

*Homes Listed by Price*

PAGES 9-76

*Parade of Homes Entries*

**Lets Build Omaha Together.**

PRESENTING SPONSOR



**METROPOLITAN**  
UTILITIES DISTRICT







# Welcome to the 2017 Parade of Homes Tour

PRESENTED BY



**BuildOmaha**  
.org

PRESENTING SPONSOR



**METROPOLITAN**  
UTILITIES DISTRICT

PUBLISHED BY

**Build Omaha**

P.O. Box 390232

Omaha, NE 68138

402-592-6942

[www.buildomaha.org](http://www.buildomaha.org)

**SALES & MARKETING**

**Mary Jayne Throener**

**Build Omaha**

**PHOTOGRAPHY**

**Gabby Young**

**Build Omaha**

**PUBLICATION DESIGN**

**Allison Leeper**

**TMT Graphic Designs**

**PRINTING**

**Don Burrow**

**West Star Printing**

For more information or to  
become a member, contact

**402-505-5002**

[www.buildomaha.org](http://www.buildomaha.org)

Build Omaha in association with the Metropolitan Utilities District are proud to present the 2017 Spring Parade of Homes. This year the Parade of Homes features 55 custom homes in 23 neighborhoods across the Omaha metro area. Home buyers can shop for their custom dream home from Papillion to Fremont.

There has never been a better time to purchase your new home. Interest rates have remained at or near historic lows. Lending Institutions have relaxed their qualifying standards and made it easier to obtain financing. The Custom homes featured here incorporate state of the art, energy efficient technology reducing your utility costs and increase your family's comfort. In short, the 37 builders in the 2017 Spring Parade of Homes are confident you are getting the opportunity to purchase the finest custom homes ever offered in this market.

Build Omaha is a builder driven association whose mission is to provide a positive open environment for the new home construction industry in the Omaha metropolitan area. We strive to work with all facets of the building industry from city halls, to suppliers, to subcontractors, to real estate agents & consumers, to government organizations, etc. By bringing these facets together we form a unified group that continues to work at keeping the American dream of home ownership alive and affordable.

Now with this guide in your possession, you can determine where to start your own search. Use the map to search by location, the price listing to search by budget, or visit all of the homes for amazing floor plans and ideas to create your own custom home. The Builders and their representatives will be on hand to answer your questions. Admission is Free.

Welcome to the Build Omaha 2017 Spring Parade of Homes.

Sincerely,

The Build Omaha Board of Directors

Jerry Torczon

Steve Taft

Todd Gaver

Eric Lakeman

Al Belt

Alan Hans

*Thank you to our builders, sponsors & advertisers  
for making this event a success!*





*Three Weekends of the Tour!*  
**April 21 - May 7, 2017**

**Saturday & Sunday: Noon - 6:00 pm**  
**Friday: 4:00 pm - 7:00 pm**

**Allen Hills**

**1** **Advance Design & Const.**  
 4926 Allen Hills Dr.

**Ritz Lake**

**2** **KZ Homes**  
 3237 Ritz Place

**Deer Creek Highlands North**

**3** **Newport Homes**  
 8101 N 129th Ave.

**Castle Creek**

**4** **Richland Homes**  
 5708 N 154th Ave.

**Indian Pointe**

**5** **Widhalm Custom Homes**  
 18970 Pratt

**6** **Charles Thomas Homes**  
 3764 N 190th St.

**7** **Dynasty Homes LLC**  
 18978 Pratt St.

**8** **Landmark Performance Homes**  
 4013 N 190th St.

**9** **Pine Crest Homes**  
 18961 Manderson St.

**Indian Creek**

**10** **Woodland Homes**  
 4601 N 192nd Ter. Cir.

**Elkhorn View Estates**

**11** **Quest Custom Homes**  
 19258 Spencer

**Spruce Ridge**

**12** **Castle Brook Builders**  
 2105 N 188th Ave.

**13** **Castle Brook Builders**  
 18725 Patrick Ave.

**Five Fountains Villas**

**14** **Royal Homes**  
 19019 Cuming Cir.

**West Shore Villas**

**15** **Malibu Homes**  
 159 S 243rd St.

**Northridge**

**16** **Fireside Homes**  
 18515 Mason St.

**17** **Woodland Homes**  
 921 S 184th Ave. Cir.

**Verona Villas**

**18** **Quest Custom Homes**  
 1601 S 198th Ave.

**Windgate**

**19** **Advantage Development, Inc.**  
 20761 Shirley St.

**20** **Al Belt Custom Homes**  
 20763 Pine St.

**Windgate II**

**21** **Nathan Homes**  
 21118 Cedar St.

**Windgate Ranch**

**22** **BCI Homes**  
 1823 S 211th St.

**23** **Ideal Designs Custom Homes**  
 2114 S 209th St.

**24** **Nilius Custom Homes**  
 2002 S 211th St.

**25** **Paradise Homes**  
 20756 Pine St.

**26** **Thomas David Fine Homes**  
 1317 S 208th St.

**The Prairies**

**27** **Absolute Customs**  
 1514 S 218th Ave.

**Remington Ridge**

**28** **Silverstone Building Company**  
 7855 S 194th St.

**Aspen Creek**

**29** **Castlebridge Homes**  
 10611 S 188th Ave.

**30** **Hill Custom Homes**  
 10619 S 191st Ave.

**31** **Jeck & Co. Builders**  
 10631 S 191st Ave.

**32** **Pine Crest Homes**  
 10640 S 191st Ave.

**33** **MJ Design Build**  
 10636 S 191st Ave.

**34** **Nelson Builders**  
 19113 Hampton Dr.

**35** **Trademark Homes**  
 10613 S 189th St.

**36** **Widhalm Custom Homes**  
 18724 Alder Dr.

**37** **Woodland Homes**  
 10644 S 191st Ave.

**38** **Woodland Homes**  
 10617 S 189th St.

**Tiburon**

**39** **Advance Design & Const.**  
 9606 S 179th St.

**Southern Pines**

**40** **Richland Homes**  
 16822 Aurora Cir.

**41** **Richland Homes**  
 16823 Aurora Cir.

**North Shore**

**42** **Advantage Development, Inc.**  
 12027 Pintail Dr.

**43** **Al Belt Custom Homes**  
 12458 Caspian Dr.

**44** **Jeck & Co. Builders**  
 10104 S 124th Ave.

**45** **MJ Design Build**  
 12458 Osprey

**46** **Pine Crest Homes**  
 12553 Cove Hollow Dr.

**47** **Showcase Homes**  
 12020 Pintail Dr.

**48** **Timberline Homes**  
 12353 Osprey Lane

**49** **Zych Construction**  
 12031 Pintail Dr.

**Ashbury Farm**

**50** **Birchwood Homes**  
 11401 S 120th Ave.

**Southbrook**

**51** **Dynasty Homes LLC**  
 11719 S 109th St.

**52** **Griffin Homes**  
 11604 S 110th Ave.

**53** **Nelson Builders**  
 11748 S 110th Ave.

**54** **ProLine Custom Homes**  
 11517 S 109th St.

**Cimarron Woods Villas**

**55** **Woodland Homes**  
 9902 Olive St.

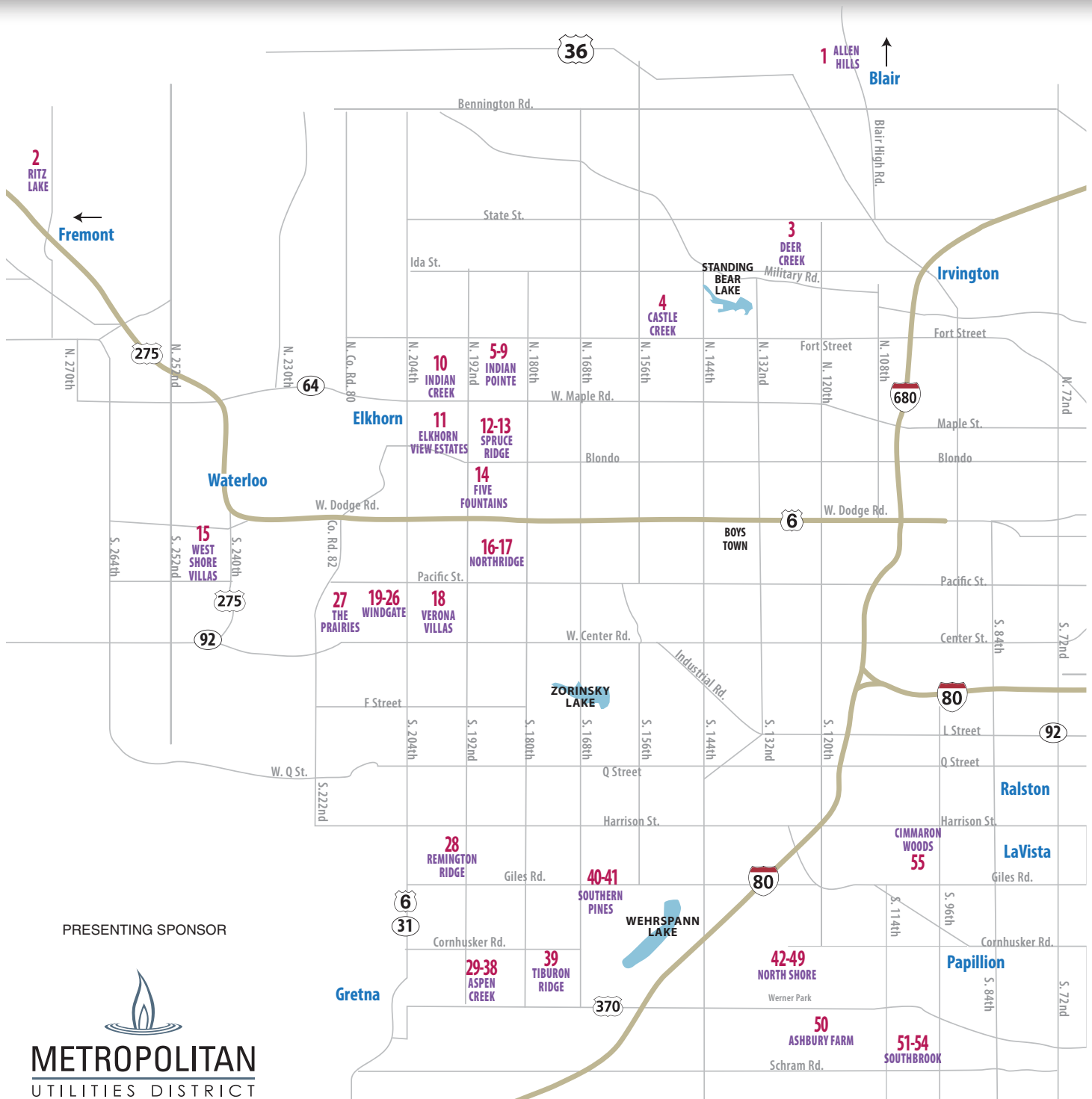
**Lets Build Omaha Together.**



# Tour 55 Homes in 24 Subdivisions

## FREE to the Public!

Watch for the Green Parade of Homes Signs!



PRESENTING SPONSOR





# Be Inspired



Brick & Stone · Landscape Lighting · Outdoor Living · Thin Brick

Watkins Concrete Block Company has the largest selection, quality, and expertise in Omaha to make your dream a reality. Make Watkins Designer Showroom your first stop for outdoor living ideas and new home inspirations.



[watkinsconcreteblock.com](http://watkinsconcreteblock.com)

402.896.0900

144th & Giles, Omaha, NE

# PARADE ENTRIES Listed by Price

## \$250,000 - \$299,000

- 40 Richland Homes**  
16822 Aurora Cir. . . . . Southern Pines
- 3 Newport Homes**  
8101 N 129th Ave. Deer Creek Highlands North
- 4 Richland Homes**  
5708 N 154th Ave. . . . . Castle Creek
- 41 Richland Homes**  
16823 Aurora Cir. . . . . Southern Pines
- 52 Griffin Homes**  
11604 S 110th Ave. . . . . Southbrook
- 54 ProLine Custom Homes**  
11517 S 109th St. . . . . Southbrook

## \$300,000 - \$349,000

- 33 MJ Design Build**  
10636 S 191st Ave. . . . . Aspen Creek
- 32 Pine Crest Homes**  
10640 S 191st Ave. . . . . Aspen Creek
- 46 Pine Crest Homes**  
12553 Cove Hollow Dr. . . . . North Shore
- 45 MJ Design Build**  
12458 Osprey . . . . . North Shore
- 35 Trademark Homes**  
10613 S 189th St. . . . . Aspen Creek

## \$350,000 - \$399,000

- 9 Pine Crest Homes**  
18961 Manderson St. . . . . Indian Pointe
- 53 Nelson Builders**  
11748 S 110th Ave. . . . . Southbrook
- 28 Silverstone Building Company**  
7855 S 194th St. . . . . Remington Ridge
- 31 Jeck & Co. Builders**  
10631 S 191st Ave. . . . . Aspen Creek
- 29 Castlebridge Homes**  
10611 S 188th Ave. . . . . Aspen Creek
- 51 Dynasty Homes LLC**  
11719 S 109th St. . . . . Southbrook
- 36 Widhalm Custom Homes**  
18724 Alder Dr. . . . . Aspen Creek

## \$350,000 - \$399,000 (Continued)

- 44 Jeck & Co. Builders**  
10104 S 124th Ave. . . . . North Shore
- 16 Fireside Homes**  
18515 Mason St. . . . . Northridge
- 55 Woodland Homes**  
9902 Olive St. . . . . Cimarron Woods Villas
- 34 Nelson Builders**  
19113 Hampton Dr. . . . . Aspen Creek
- 18 Quest Custom Homes**  
1601 S 198th Ave. . . . . Verona Villas
- 2 KZ Homes**  
3237 Ritz Place. . . . . Ritz Lake

## \$400,000 - \$449,000

- 8 Landmark Performance Homes**  
4013 N 190th St. . . . . Indian Pointe
- 42 Advantage Development, Inc.**  
12027 Pintail Dr. . . . . North Shore
- 37 Woodland Homes**  
10644 S 191st Ave. . . . . Aspen Creek
- 10 Woodland Homes**  
4601 N 192nd Ter. Cir. . . . . Indian Creek
- 17 Woodland Homes**  
921 S 184th Ave. Cir. . . . . Northridge
- 13 Castle Brook Builders**  
18725 Patrick Ave. . . . . Spruce Ridge
- 48 Timberline Homes**  
12353 Osprey Lane . . . . . North Shore
- 47 Showcase Homes**  
12020 Pintail Dr. . . . . North Shore
- 6 Charles Thomas Homes**  
3764 N 190th St. . . . . Indian Pointe
- 7 Dynasty Homes LLC**  
18978 Pratt St. . . . . Indian Pointe
- 22 BCI Homes**  
1823 S 211th St. . . . . Windgate Ranch
- 38 Woodland Homes**  
10617 S 189th St. . . . . Aspen Creek
- 25 Paradise Homes**  
20756 Pine St. . . . . Windgate Ranch
- 30 Hill Custom Homes**  
10619 S 191st Ave. . . . . Aspen Creek

## \$450,000 - \$499,000

- 12 Castle Brook Builders**  
2105 N 188th Ave. . . . . Spruce Ridge
- 49 Zych Construction**  
12031 Pintail Dr. . . . . North Shore
- 39 Advance Design & Construction**  
9606 S 179th St. . . . . Tiburon
- 14 Royal Homes**  
19019 Cuming Cir. . . . . Five Fountains Villas
- 43 AI Belt Custom Homes**  
12458 Caspian Dr. . . . . North Shore
- 26 Thomas David Fine Homes**  
1317 S 208th St. . . . . Windgate Ranch
- 5 Widhalm Custom Homes**  
18970 Pratt . . . . . Indian Point
- 19 Advantage Development, Inc.**  
20761 Shirley St. . . . . Windgate

## \$500,000 - \$600,000

- 20 AI Belt Custom Homes**  
20763 Pine St. . . . . Windgate
- 11 Quest Custom Homes**  
19258 Spencer . . . . . Elkhorn View Estates
- 24 Nilius Custom Homes**  
2002 S 211th St. . . . . Windgate Ranch
- 23 Ideal Designs Custom Homes**  
2114 S 209th St. . . . . Windgate Ranch

## \$600,000 - \$700,000

- 15 Malibu Homes**  
159 S 243rd St. . . . . West Shore Villas
- 1 Advance Design & Construction**  
4926 Allen Hills Dr. . . . . Allen Hills
- 21 Nathan Homes**  
21118 Cedar St. . . . . Windgate II

## \$800,000 +

- 50 Birchwood Homes**  
11401 S 120th Ave. . . . . Ashbury Farm
- 27 Absolute Customs**  
1514 S 218th Ave. . . . . The Prairies



*Details...*  
matter to us.



**Taylor Made**  
*Home Solutions*<sup>SM</sup>

MOULDING • STAIR PARTS • DOORS • BUILDING MATERIALS

RESIDENTIAL / MULTI-FAMILY / COMMERCIAL

7700 Serum Avenue | Ralston, NE 68127 | 402.331.4708  
www.taylormadehomesolutions.com



**RITZ LAKE**  
LUXURY LAKE LIVING

*Area's newest spring fed lake!*

- Large Walk-Out Lakefront Lots
- City Utilities - No SID
- 20 Minutes to West Omaha
- Boating, Fishing and Watersports
- Low Tax Levi



Contact Greg Hall  
402-650-0795  
greg.hall@cbshome.com



www.ritzlake.com

DODGE STREET

ProHome manages the home warranty for these dedicated builders:

- ✓ Advantage Development
- ✓ Barr Homes
- ✓ Belt Custom Homes
- ✓ Best Construction
- ✓ Hildy Construction
- ✓ Ken Oster Homes
- ✓ Prairie Homes
- ✓ Proline Homes
- ✓ Zych Construction



**ProHome of Nebraska**

BUILDERS THAT CARE ABOUT THEIR HOMEOWNERS USE PROHOME



The national standard in new home warranty management  
® National franchise, locally owned and operated for 19 years

✓ CONTACT US  
(402) 965.8700



1

**ALLEN  
HILLS  
BLAIR**

4926 Allen Hills Dr.

**THE PRAIRIE**

With an incredible view, this expansive home, situated on more than two acres includes a “zero-entry” three car side load garage. With nearly 2,500 finished square feet on the main level, this plan includes three large bedrooms and 10 foot ceilings throughout. Complete with solid core 8 foot doors and oversized woodwork, this open plan also includes custom wrought iron railing and painted kitchen cabinetry to the ceiling. A full tile linear fireplace completes the great room. Quartz countertops are installed throughout and additional faux touches are included in the powder bath, master bedroom ceiling, and kitchen hood.

SALES BY:

**Advance Design &  
Construction, Inc.**  
402-861-0484

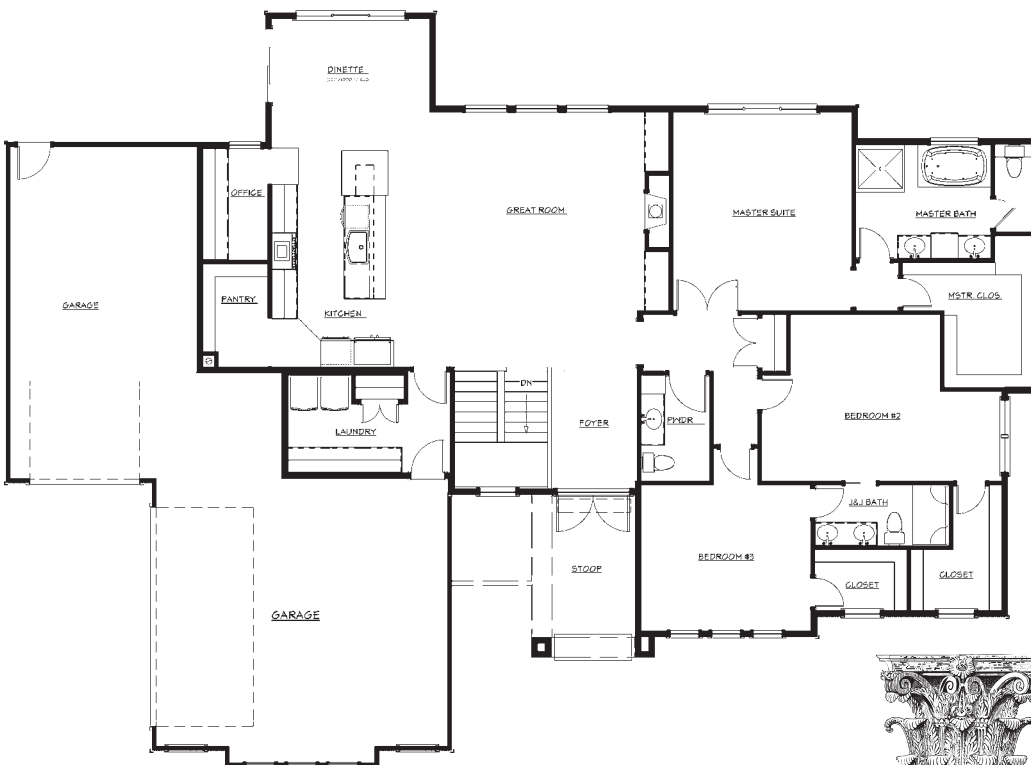
PRICE OF ENTRY:

**\$649,000**

(Lot Included)

FINISHED SQ. FT.:

**2,489**



**ADC**  
www.adchomes.com



# 2

## RITZ LAKE FREMONT

3237 Ritz Place



SALES BY:

**Greg Hall**  
402-650-0795

**Riley Lebbert**  
402-208-1873

**CBSHome**  
**Real Estate**

PRICE OF ENTRY:

**\$398,000**

(Lot Not Included)

FINISHED SQ. FT.:

**2,839**

### THE HAMPTON

KZ Homes presents our Hampton plan located at The Villas at Ritz Lake which is an upscale neighborhood of maintenance free single family homes with walkout lots offering homeowners an easy lifestyle at one of the area's newest spring fed lake properties.

Our villa plan provides a beautiful open floor plan, exquisite granite countertops throughout, custom cabinets, huge hidden pantry, large open basement rec. room with wet bar, covered deck and patio perfectly designed for today's lifestyle and entertaining.

We offer several beautifully designed home plans, each of which can be customized in any way. Whether it is one of our villa homes or a completely new custom home of just about any size, our design team can work with you to design and build your perfect dream home at Ritz lake as well as many areas in and around Omaha.



[www.kz-homes.com](http://www.kz-homes.com)

PRESENTING SPONSOR





# 3

## DEER CREEK HIGHLANDS NORTH OMAHA

8101 N 129th Ave.

### MCKENNA

Newport Homes easy living ranch home with 2x6 walls, 3 bedroom, 4 car garage with main floor laundry, walk-in pantry, granite countertops, ceramic back splash and hard wood floors in the kitchen. Walk-in ceramic doorless shower and double raised sinks with quartz countertop in the master bath. Covered patio. Yes we can build this for you \$268,000.

SALES BY:

**Tom Blight**  
**402-639-0904**

**Sue Kuhl**  
**402-680-1180**

**NP Dodge**  
**Real Estate**

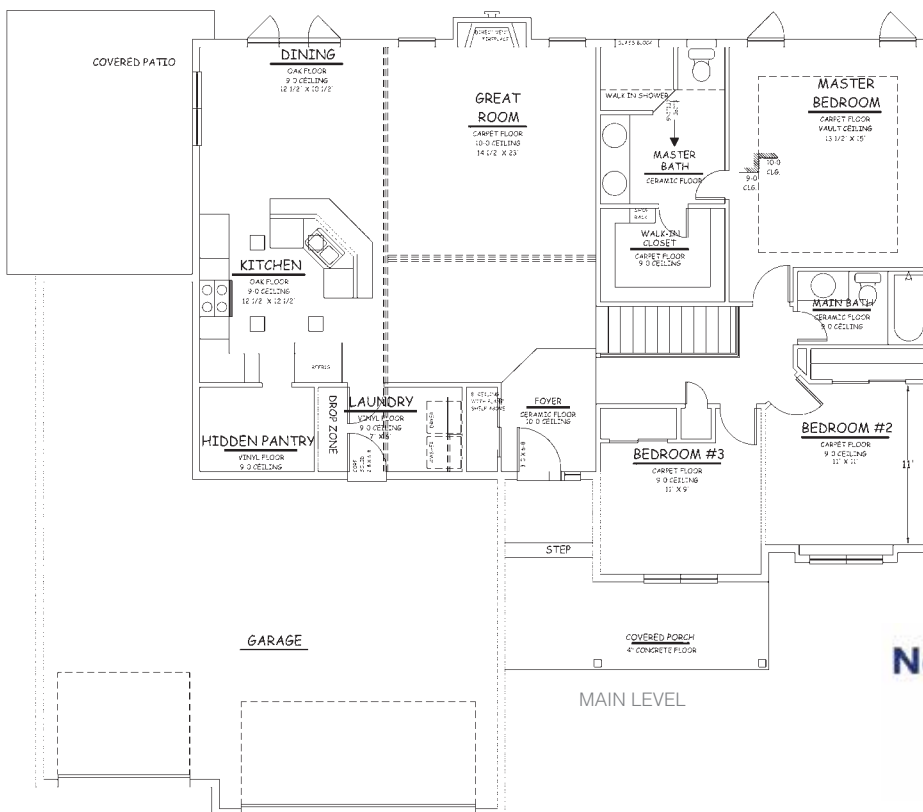
PRICE OF ENTRY:

**\$268,000**

(Lot Included)

FINISHED SQ. FT.:

**1,660**



[www.newporthomesomaha.com](http://www.newporthomesomaha.com)



PRESENTING SPONSOR



*Private Mortgage Banking*

## Enjoy peace of mind when building your new home



With the **Builder Best**<sup>®</sup> Extended Rate Lock program, you can protect yourself from rising interest rates and focus on what matters most — building your home. And, if rates drop, you may qualify for a one-time float-down option to a lower rate or a different loan program.

Contact your Private Mortgage Banker for more details.



**Paul David Camenzind**

**402-861-7888**

[paul.d.camenzind@wellsfargo.com](mailto:paul.d.camenzind@wellsfargo.com)

[www.paulcamenzind.com](http://www.paulcamenzind.com)

NMLSR ID 400310



**Lisa L. Hedrick**

**402-498-5063**

[lisa.l.hedrick@wellsfargo.com](mailto:lisa.l.hedrick@wellsfargo.com)

NMLSR ID 1057298



**Kevin W. Mowery**

**402-290-0216**

[kevin.w.mowery@wellsfargo.com](mailto:kevin.w.mowery@wellsfargo.com)

[www.wfhm.com/kevin-mowery](http://www.wfhm.com/kevin-mowery)

NMLSR ID 968400



**Austin Toney**

**402-384-5684**

[austin.toney@wellsfargo.com](mailto:austin.toney@wellsfargo.com)

[www.wfhm.com/austin-tony](http://www.wfhm.com/austin-tony)

NMLSR ID 606161

Information is accurate as of date of printing and is subject to change without notice. Wells Fargo Home Mortgage is a division of Wells Fargo Bank, N. A. © 2016 Wells Fargo Bank, N.A. All rights reserved. NMLSR ID 399801. AS3128580 Expires 05/2017



Together we'll go far





4

CASTLE  
CREEK  
OMAHA

5708 N 154th Ave.

## RUBY 4D

The RUBY by Richland Homes encompasses all the characteristics of a family home

The heart of this house is the living area and the kitchen. With an abundance of work and prep space, this plan's kitchen suits not only the gourmet cook, but also serves as the central entertaining space with plenty of room to gather around an expansive island.

The owner's entry features cubbies and hooks so your living space doesn't get cluttered with kid's backpacks and shoes.

Steal away from the daily grind in your large master bedroom, complete with a Sitting Room, a huge walk-in closet and spacious vanity that ensures plenty of room for everyone.

Other incredible standard features in all Richland Homes include: sprinkler system, brushed nickel hardware and light fixtures, LED under cabinet lighting, two trees and too many more to list.

Contact Jenn Torczon at 402-881-1834 for more information on building with Richland Homes.



[www.buildwithrichland.com](http://www.buildwithrichland.com)



SALES BY:

**Jennifer Torczon**  
402-881-1834

**Berkshire Hathaway  
HomeServices  
Ambassador Real Estate**

PRICE OF ENTRY:

**\$275,255**

(Lot Included)

FINISHED SQ. FT.:

**2,449**



# 5

## INDIAN POINTE ELKHORN

18970 Pratt St.



SALES BY:

**Michael Maley**  
402-981-7400

**CBSHome**  
Real Estate

PRICE OF ENTRY:

**\$472,000**

(Lot Included)

FINISHED SQ. FT.:

**3,651**



## THE GREYSTONE

Widhalm Custom Homes, Inc presents the Greystone. Prepare to be WOWED by the quality of construction, high end finishes, and all the bells and whistles this incredible, open, and efficient ranch home has to offer. The moment you enter your breath will be taken away by the natural light with amazing views, custom finishes, and rustic / modern details that surround you. We are currently building throughout the metro area and have several lots and plans to choose from. If you are looking for a unique, truly custom home and an informative and interactive building experience please consider Widhalm Custom Homes, Inc as your next home builder.



# WIDHALM

---

## CUSTOM HOMES INC.

[www.widhalmcustomhomes.com](http://www.widhalmcustomhomes.com)

PRESENTING SPONSOR





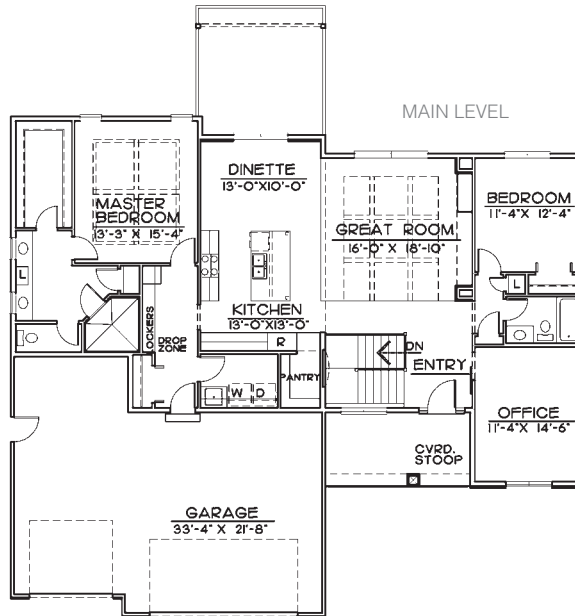
# 6

## INDIAN POINTE ELKHORN

3764 N 190th St.

### BRANTLEY

You're buying the best home in Omaha when you buy a Charles Thomas Home-Nebraska's #1 builder for high performance homes! Charles Thomas Homes is a custom builder that only builds pre-sold homes, but here's your opportunity to buy one that is ready for move in! Our "Brantley" model is now for sale! This beautiful ranch home offers a spacious floor plan w/lots of room for entertaining! Full finished basement with wet bar and game area. 4 bedrooms total with a spacious office.



MAIN LEVEL

SALES BY:

**Tim Lowndes**  
402-306-0065

**Berkshire Hathaway  
HomeServices  
Ambassador Real Estate**

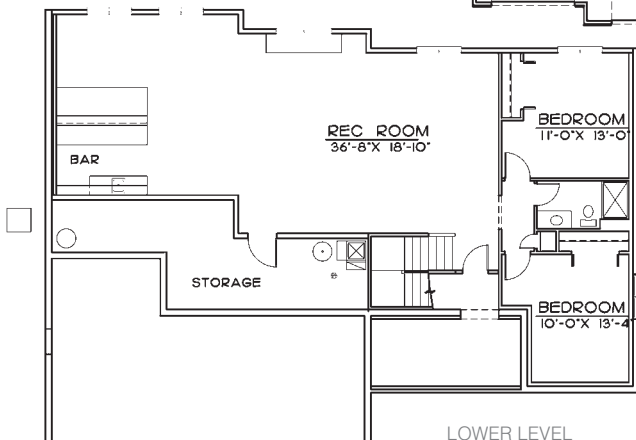
PRICE OF ENTRY:

**\$436,500**

(Lot Included)

FINISHED SQ. FT.:

**3,314**



LOWER LEVEL

# Charles Thomas HOMES

[www.charlesthomashomes.com](http://www.charlesthomashomes.com)



**METROPOLITAN**  
UTILITIES DISTRICT

PRESENTING SPONSOR





# CELEBRATE WITH US AS TD2 TURNS 50

50<sup>th</sup> ANNIVERSARY  
1967 - 2017

# TD2

engineering  
& surveying

**Years Of Change**  
**Thompson, Dreesen & Dorner, Inc.**  
**1967 - 2017**

## Looking to Refresh Your Home for Spring?

Choose PPG PAINTS™  
for your next project.



**\$25 OFF** Purchase  
of \$100 or more

Expires 7/31/2017. Maximum discount of \$25. Valid for one-time use only at any company-owned PPG Paints stores. Qualifying purchase of \$100 or more required. Offer excludes: spray equipment, wall coverings, and ladders. Other restrictions may apply. Original coupon must be presented and surrendered at the time of the order. Coupon may not be applied to previous transactions, used to make payment on monthly statements, or combined with other promotions. Only one coupon per store visit.

Associate Instructions: Scan UPC code and collect coupon. Customer will be credited automatically based on purchases.



Our color and  
product experts  
are ready to help!

Visit [ppgpaints.com/store-locator](http://ppgpaints.com/store-locator)  
to find a PPG Paints store near you.



©2017 PPG Industries, Inc. PPG Paints Logo, PPG Paints Logo & Design and MANOR HALL™ are trademarks of PPG Industries Ohio, Inc.



21018 Cumberland Drive  
Elkhorn NE 68022

# Christensen Lumber

*Since 1923... Still the Pro's Choice!*



[www.christensenlumber.com](http://www.christensenlumber.com)



7

INDIAN  
POINTE  
ELKHORN

18978 Pratt St.

## ASHTON

Dynasty Homes Ashton Two Story. Flexible spaces. Ultimate Chef's kitchen. Frigidaire Professional appliances. Incredible butler's pantry. Loads of natural light. All Quartz tops. Certified High Performance. Highest quality materials and craftsmanship. See the Dynasty Difference!



DYNASTY HOMES

| CUSTOM BUILDERS |

[www.dynastyhomesomaha.com](http://www.dynastyhomesomaha.com)



SALES BY:

**Matt Beers**  
402-681-5420

**CBSHome**  
Real Estate

PRICE OF ENTRY:

**\$439,900**

(Lot Included)

FINISHED SQ. FT.:

**2,478**





# 8

## INDIAN POINTE ELKHORN

4013 N 190th St.



SALES BY:

**Jana Faller**

**402-672-5550**

**Synergy Real Estate**

### THE WYNDHAM PLAN

Introducing Landmark Performance Homes newest 2-story, The Wyndham. Unique plan with staircase in the rear of the home. Open and airy, this plan features den off the foyer w/ modern barn doors and open great room w/ eat-in kitchen. Wood-look tile flooring & quartz counters in the kitchen with stainless steel appliances and huge walk-in pantry. Oversized drop zone and closet. Four bedrooms with walk-in closets PLUS loft upstairs. We custom build this plan, endless options.

BASE PRICE:

**\$359,879**

(with Flat Lot)

AS SHOWN:

**\$405,204**

(Walkout Lot & Options)

FINISHED SQ. FT.:

**2,772**



**LANDMARK  
PERFORMANCE HOMES**

[www.buildalandmark.com](http://www.buildalandmark.com)

PRESENTING SPONSOR

  
**METROPOLITAN  
UTILITIES DISTRICT**





9

INDIAN  
POINTE  
ELKHORN

18961 Manderson St.

## THE ARTISAN

Function and style came together and the Artisan was born! This home has room for everyone with tons of practical bonus space!

Unloading the car has never been so easy. Your owner's entry, off the spacious garage, leads you straight to the pantry for grocery drop off. Then tuck clutter away in your mudroom and office nook.

Once your family and friends get a glimpse of the open kitchen and living room, your house will become the hub for movie nights and holiday gatherings.



But wait, there's more – the main floor whatever room. Toy room, yoga sanctuary, mini library? It's for whatever your heart desires!

Overlooking the foyer, the upstairs loft makes the perfect man cave or gaming zone. Your days of hauling baskets are over, with the roomy laundry room conveniently situated near the bedrooms.



SALES BY:

**Paige Morrison**  
**402-612-9542**

**Nebraska Realty**

PRICE OF ENTRY:

**\$352,000**

(Lot Included)

FINISHED SQ. FT.:

**2,715**



[www.buildpinecrest.com](http://www.buildpinecrest.com)



Builders Supply Company is devoted entirely to helping you bring your building, remodeling or project ideas to life.

Builders Supply's Home Design Center is one of the most comprehensive and innovative home showcases in the United States. Walking into the Home Design Center is like having a contemporary living magazine come to life right in front of you. There are hundreds of options for cabinets, doors and windows, fireplaces, decks, and so much more. Our beautiful "real life" displays enable you to get a first hand look at the products you're considering. Whether building a new home or updating an existing one, our professional design staff is ready to assist you.



We've provided you with excellent service and stood by our products since 1951. You can expect nothing less every day we're on the job with you.

- Lumber
- Wall Panels
- Trusses
- Roofing
- Windows
- Doors
- Mouldings
- Hardware
- Siding
- Insulation
- Composite Decking
- Pneumatic Nails



**BUILDERS** INC.  
**SUPPLY CO.**  
— WHERE QUALITY COSTS LESS

We build on our reputation everyday...

5701 S. 72nd Street  
Omaha, NE 68127  
**402.331.4500**

**builderssupplyco.com**





10

INDIAN  
CREEK  
ELKHORN

4601 N 192nd Ter. Cir.

## THE ASHLEY

Welcome home to "The Ashley" ranch villa by Woodland Homes, Inc. An easy-living lifestyle awaits you in this 4 BR 3 BA 3-Car home. Enjoy the open floor plan and amenities that include main floor wood flooring in the entry, great room, kitchen and dinette- Great Room fireplace, kitchen island and walk-in pantry- Main floor laundry- Drop zone off the garage MBA walk-in closet and snail shower. The finished lower level offers a large rec room with bar area and corner fireplace- two bedrooms each with walk-in closets- plenty of storage. Roomy patio and inground sprinkler system. Quality and craftsmanship throughout



SALES BY:

**Terry Stork**  
402-657-2067  
402-697-4281

**CBSHome  
Real Estate**

PRICE OF ENTRY:

**\$414,385**  
(Lot Included)

FINISHED SQ. FT.:

**3,136**

**Woodland  
Homes**

[www.woodlandhomesomaha.com](http://www.woodlandhomesomaha.com)



# 11

## ELKHORN VIEW ESTATES ELKHORN

19258 Spencer St.



SALES BY:

**Tom Meginnis**  
402-758-1805

**Quest Custom Homes**  
Design & Build

**Deb Cizek**  
402-699-5223

**The Cizek Group**  
Berkshire Hathaway  
HomeServices  
Ambassador Real Estate

- Pursue your Quest for your dream home with Quest Custom Homes, a premiere, high end, custom homebuilder serving clients for the past 30 years!
- Stunning private back yard traditional ranch in Elkhorn View Estates
- Features include:
  - 4 Bedrooms
  - Open Floor Plan
  - Oversized Granite Kitchen Island
  - Custom Cabinets
  - Wood Floors
  - Main Floor Buffet
  - Covered Deck
  - Luxury Appliances
  - Stunning Basement Bar with Accented Stone Wall
  - Basement Wine Cellar

Pursue your "Quest" for your *Dream Home* with Quest Custom Homes



PRICE OF ENTRY:

**\$539,900**

(Lot Included)

FINISHED SQ. FT.:

**3,614**



**QUEST**  
CUSTOM HOMES  
DESIGN & BUILD  
[www.questhomesomaha.com](http://www.questhomesomaha.com)

PRESENTING SPONSOR

  
**METROPOLITAN**  
UTILITIES DISTRICT



**12**  
**SPRUCE**  
**RIDGE**  
**ELKHORN**  
 2105 N 188th Ave.

**STIRLING COLLECTION**

The new 2017 Stirling Collection is a five bedroom, four bathroom ranch home. This home has a contemporary design with efficient kitchen and mudroom space, a tile fireplace and tile floors on the main level. Solid surface throughout the home and over sized closet space. Laundry room on the main level. The finished basement includes a wet bar and is perfect for entertaining as well as for a growing family. Beautiful home that fits all life styles!



[www.cbbomaha.com](http://www.cbbomaha.com)

SALES BY:

**Shelli Klemke**  
**402-650-2609**

**Berkshire Hathaway**  
**HomeServices**  
**Ambassador Real Estate**

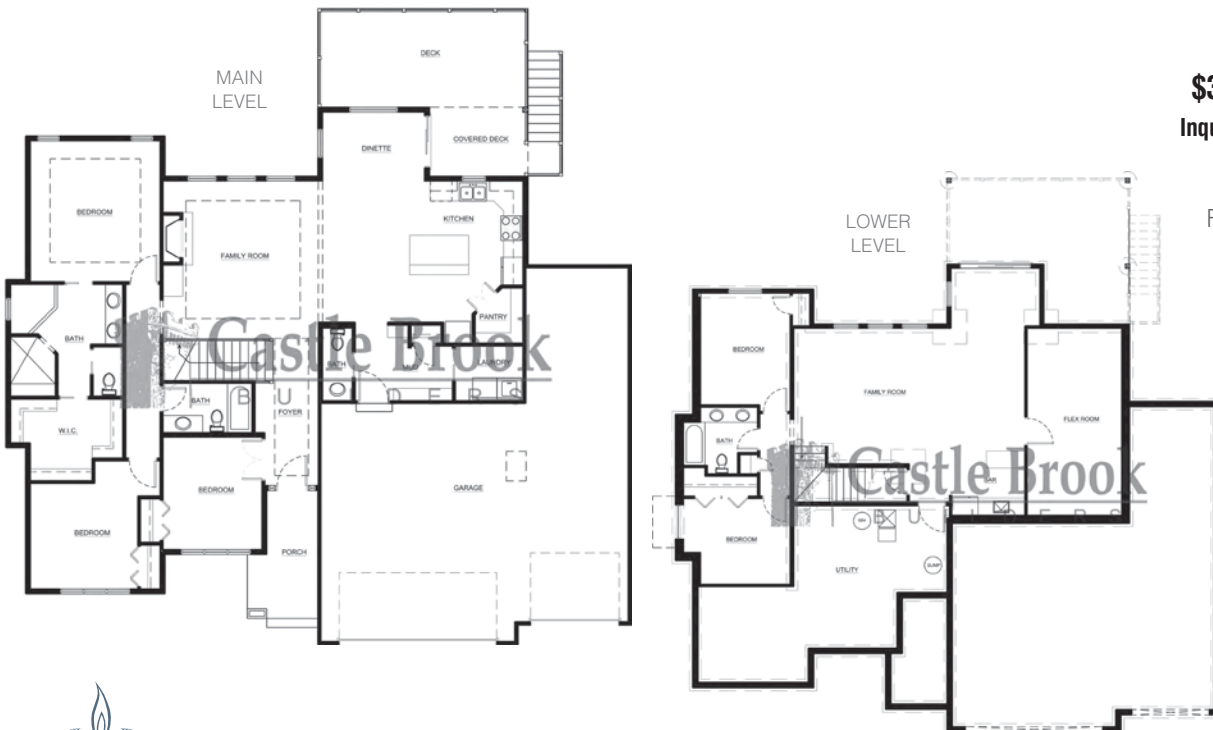
PRICE OF ENTRY:

**\$455,963**  
 (Lot Included)

**\$390,203 (base)**  
 Inquire for more details.

FINISHED SQ. FT.:

**3,159**



PRESENTING SPONSOR

FROM GROUND BREAK  
*to* PERMANENT FINANCING

*We have you covered*

COMPETITIVE RATES, LOT LOANS, BRIDGE LOANS,  
CONVENTIONAL, VA, FHA, *or* JUMBO LOANS

COREBANK.COM/REAL-ESTATE

CORE BANK

MEMBER FDIC EQUAL HOUSING LENDER

## Quality • Value • Service • Excellent



### Complete line of:

Wood Windows & Patio Doors  
Clad Windows & Patio Doors  
Vinyl Windows & Patio Doors  
Specialty Windows  
Storm Doors & Windows Louvers  
Sky Lights-Wasco/Solatube

### Available Features:

Snug Fitting Designs Low-E Glass  
Custom Sizing Easy Cleaning  
Service Repair Available

7301 Main Street Ralston, NE

**402-592-2850**



- Oak-Maple-Alder Pre-Hung Doors
- Wide Variety of Molded Panel Doors
- Masonite Steel/Fiberglass Doors
- Decorative Door Lights
- Wood-Vinyl & Clad Exterior Door Frames
- Oak-Maple-Metal Stair Parts
- Kwikset Handles & Lock Sets
- Plywood-Wood & Metal Shelving

5802 So. 72nd Ralston, NE

**402-331-0377**



The Genuine. The Original.

**OVERHEAD DOOR COMPANY  
OF OMAHA**

*Don't be fooled,*

*Look for the "Overhead Door" Ribbon!*

Beautify your garage with a new  
raised panel steel door.

The look and beauty of wood with the  
security and low maintenance of steel.

In standard and custom door widths.

**Garage Door Openers with Remote**

*Ask About Installation*

**Free Estimates Call Today**

**24-Hour Emergency Service**

**ONE CALL DOES IT ALL!**

1222 Royal Dr. Papillion, NE

**402-331-0526**

[www.aaabuildingcomponents.com](http://www.aaabuildingcomponents.com)





**13**  
**SPRUCE  
 RIDGE  
 ELKHORN**  
 18725 Patrick Ave.

**BERKELEY COLLECTION**

The new 2017 Berkeley Collection is a five bedroom, five bathroom spacious two story home. Main level boasts an open floor plan with a stone fireplace and solid surfaces throughout the home. Sunken den off the kitchen which is perfect for an office or kids toy room. Upstairs has comfortable living space for any family and/or guests. Master bathroom includes a tile shower and whirlpool tub with an oversized walk-in closet. Modern finishes throughout. Must see home!

SALES BY:

**Shelli Klemke**  
**402-650-2609**

**Berkshire Hathaway  
 HomeServices  
 Ambassador Real Estate**

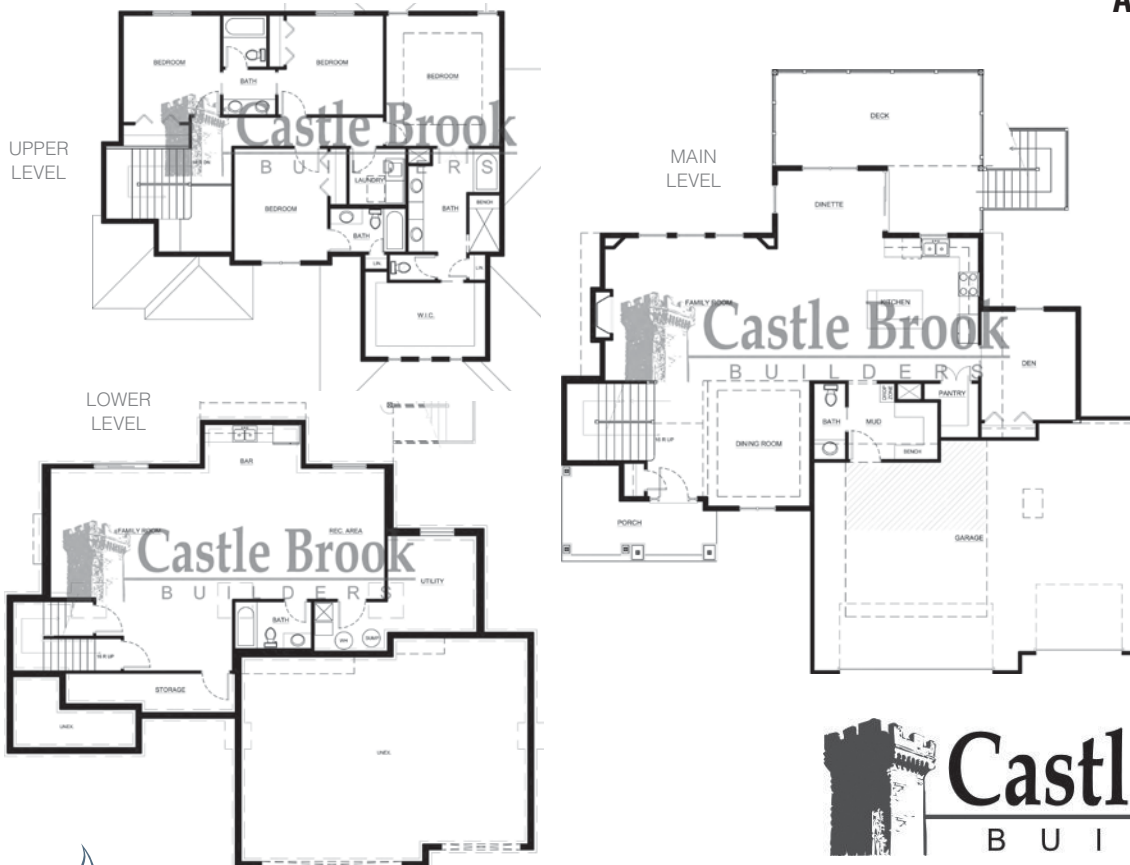
PRICE OF ENTRY:

**\$439,600**  
 (Lot Included)

**\$399,360 (base)**  
 Inquire for more details.

FINISHED SQ. FT.:

**3,568**



[www.cbbomaha.com](http://www.cbbomaha.com)



PRESENTING SPONSOR

# 14

## FIVE FOUNTAINS VILLAS

OMAHA

19019 Cuming Cir.



SALES BY:

**John Greguska**  
**402-612-0594**

**NP Dodge**  
**Real Estate**

PRICE OF ENTRY:

**\$459,900**  
(Lot Included)

FINISHED SQ. FT.:

**3,008**

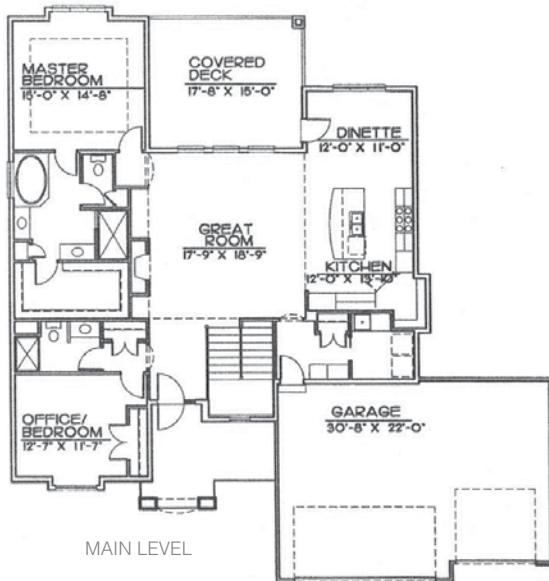
### GENOA VILLA

The Royal Collection of Homes: The "Genoa" villa floor plan. The furnishings will show its beauty and how it can be personalized. Its thoughtful design offers an open floor plan. This ranch includes a full-sized three car garage and a covered patio.

You will love Royal's high end quality from custom cabinets to Royal's over-sized trim. The plan provides a gourmet kitchen with custom cabinets, an island, a large walk-in pantry as well as Bosch appliances and quartz or granite countertops. Royal's mixture of wood, stone & other decor features enhance the quality and beauty of this home. The master bath offers a whirlpool tub, double vanities and a walk-in closet. The second main floor bedroom or home office, is just of the 3/4 bath.



The lower level is finished with the same Royal quality with two finished bedrooms, 3/4 bath and a recreation room with a wet bar. This is a MUST SEE villa design that was designed with you in mind.



PRESENTING SPONSOR





**15**  
**WEST SHORE**  
**VILLAS**  
**WATERLOO**  
 159 S 243rd St.

## THE BESSON

Malibu Homes is always innovating and this gorgeous lake community is no exception! This brand new Villa features a wide open floor plan with top of the line finishes. Some features include: walk-in pantry, a covered deck and patio. Complete with a trending stand up conversational bar in the rec room. The master bath features a deep soaker tub to wash your cares away and a huge walk in closet and shower! This beautiful custom home backs to certified wetlands ensuring your carefree, villa lifestyle will never be interrupted by a neighbor. Come scoop this beauty up and start your vacation lifestyle today with Malibu Homes at the Villas at West Shores!



SALES BY:

**Aaron Horn**  
**402-612-5163**

**Berkshire Hathaway**  
**HomeService**  
**Ambassador Real Estate**

PRICE OF ENTRY:

**\$614,900**

(Lot Included)

FINISHED SQ. FT.:

**3,860**



H O M E S

*Building Together™*

[www.homesbymalibu.com](http://www.homesbymalibu.com)



PRESENTING SPONSOR



# 16

## NORTHRIDGE ELKHORN

18515 Mason St.



SALES BY:

**Bryce Penke**  
**402-578-9006**

**Berkshire Hathaway**  
**HomeServices**  
**Ambassador Real Estate**

PRICE OF ENTRY:

**\$389,000**

(Lot Included)

FINISHED SQ. FT.:

**2,552**

### THE ASHBERRY

The Fireside Homes Ashbury Model in Northridge is a wonderful 2-story plan with 4 bedrooms, 4 bathrooms, office/dining on the main level, Pella windows, stainless steel appliances, custom cabinets, 3/4-inch wood floors, and much more.

Fireside is currently building in Northridge, Indian Point, North Shore, Copperfields, The Prairies, Grand View and many other areas. Please call Bryce Penke for an appointment.



[www.firesideomaha.com](http://www.firesideomaha.com)

PRESENTING SPONSOR





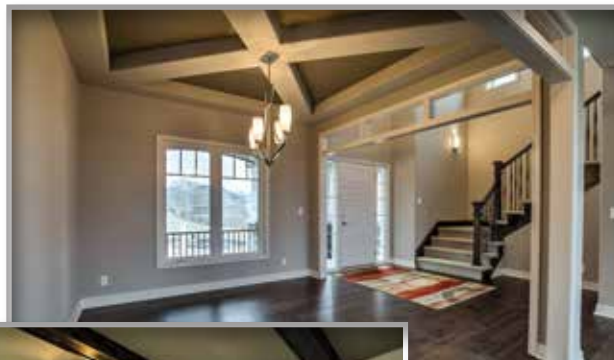
17

**NORTHRIDGE  
ELKHORN**

921 S 184th Ave. Cir.

## CABERNET II

Woodland Homes Welcomes you to our newest Cabernet II design “The Cape Cod” virtually every aspect of this home has been crafted and designed with you in mind. From the sweeping two story entry way flooded with light to the gourmet kitchen that overlooks the great room and dinette. Main floor guest bedroom or office, hidden pantry and drop zone are one of a kind. Second floor suites come with bath access from all bedrooms and owners suite has a sitting room and fireplace. Don't forget the dream bath with walk in shower and two closet areas. Come check out The Cape Cod and see a little East Coast inspiration in the mid-west. Building in all areas including Acre lots coming soon to Elkhorn South. \*Model not for Sale\* Price includes lot but not all options shown. See listing agent for details.



SALES BY:

**Mark Ciochon  
402-578-1910**

**Berkshire Hathaway  
HomeServices  
Ambassador Real Estate**

PRICE OF ENTRY:

**\$429,900**

(Lot Included)

FINISHED SQ. FT.:

**3,136**

**Woodland  
Homes**

[www.woodlandhomesomaha.com](http://www.woodlandhomesomaha.com)



# 18

## VERONA VILLAS ELKHORN

1601 S 198th Ave.



SALES BY:

**Karen Fries**  
402-690-1243

**Berkshire Hathaway  
HomeServices  
Ambassador Real Estate**

**Tom Meginnis**  
402-758-1805  
**Quest Custom Homes  
Design & Build**

PRICE OF ENTRY:

**\$395,000**  
(Lot Included)

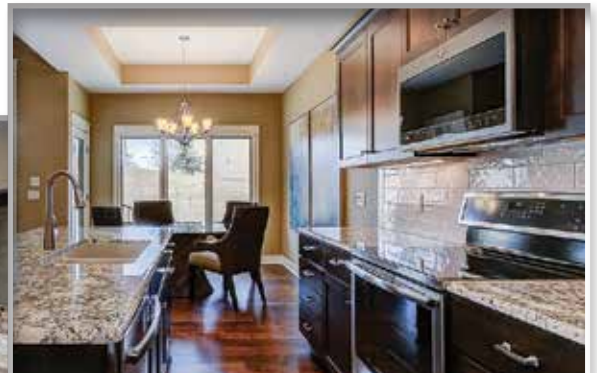
FINISHED SQ. FT.:

**2,723**

### BLUE SAGE VILLA

Ranch Villa built by Tom Meginnis with Quest Custom Homes. This high quality villa featured in the Blue Sage development offers the following:

- 3 Bedroom / 3 Bath Executive Ranch Main Floor Office or 4th Bedroom
- Stone on Front Elevations
- High-efficiency Furnace and AC
- Pella ProLine Windows
- Premium Smart Lap Siding
- Stained Wood Cabinetry ( Standard )
- Oversized Painted Casing & Base
- 2 Panel Moulded Interior Doors
- Amazing floor to ceiling Stone Fireplace
- Security System PreWire
- Granite & Quartz Countertops
- Wood Floors
- 50 gallon Gas Water Heater
- Sprinkler System
- Partially Covered Deck with Metal Railings



Pursue your "Quest" for your *Dream Home* with Quest Custom Homes



[www.questhomesomaha.com](http://www.questhomesomaha.com)

PRESENTING SPONSOR





# ***CHOOSE 100% HARDIE™***

*for authentic character and  
uncompromising performance*

**AND A 10-YEAR SERVICE COMMITMENT THAT  
COVERS 100% OF LABOR AND MATERIAL COSTS.**

**No deductible. No middlemen. No hassle.**

We are so confident in our 100% HARDIE exterior, that if you encounter any siding or trim issues during the first 10 years, simply call James Hardie directly. We'll come to your home and correct the problem at no cost to you. It's another reason to insist on America's #1 brand of siding.

**Ask your builder for more details  
or visit [choosehardie.com](http://choosehardie.com)**

**Contact your local  
James Hardie Representative!**  
Jason McDonald  
(402) 830-8828  
[Jason.McDonald@jameshardie.com](mailto:Jason.McDonald@jameshardie.com)

\*Coverage is for siding or trim issues related to cladding installation or manufacturing defects.

All other terms, conditions and exclusions of James Hardie standard product warranties apply. James Hardie assumes no responsibility for any non-cladding related problems.

© 2016 James Hardie Building Products Inc. All Rights Reserved. TM, SM, and ® denote trademarks or registered trademarks of James Hardie Technology Limited. The  is a registered trademark of James Hardie Technology Limited. AD1609 03/16



**JamesHardie**

Siding | Trim





# FIREPLACE STONE & PATIO

Inspired Living, Inside and Out



FireplaceStonePatio.com

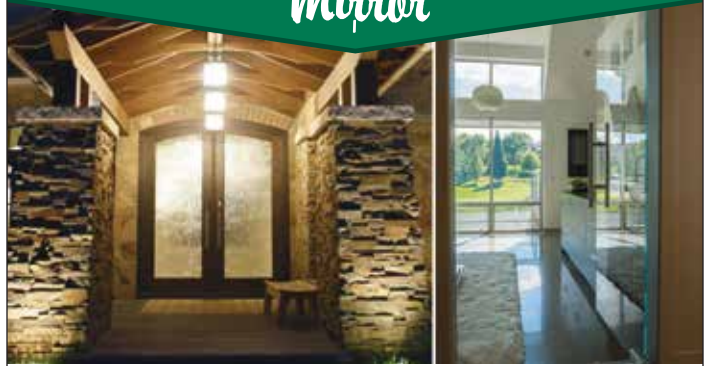
outdoor  
lifestyles  
by hearth & home technologies

## Authentic Look, Impressive Heat

Add an impressive addition to your outdoor living space this spring, then gather around the fire and be ready to entertain all summer long! Visit our showroom to get started now!

402.884.8600 | 13709 Industrial Rd. Omaha, NE 68137

# Quality Glass & Mirror



Looking for custom glass, mirror, or shower & bath enclosure upgrade?

Visit our showroom.

Monday—Friday | 8am – 5pm.

14242 C Circle Omaha, NE 68144

Commercial | Residential | Remodels | New Homes  
Apartments | and More

qualityglassomaha.com | (402) 339-3737



In the building and remodeling industry, your reputation is only as good as the products you use. And our reputation is only as good as the products we offer.

Contact us today to discuss window and door solutions for your next project.



13819 Industrial Road  
Omaha, NE 68137  
402-333-4321

## YOUR PROJECT. YOUR PASSION.

Your commitment to offering  
unbeatable quality and performance –  
no wonder you choose Integrity.



from **MARVIN**  
Windows and Doors

Built to perform:

ALL ULTREX SERIES

Casement & Awning | Double Hung | Single Hung | Glider | Polygon | Round Top | Sliding Patio Door



# 19

## WINDGATE ELKHORN

20761 Shirley St.

### THE SAWYER

We have a vision for your life. Check out our all new 2 story plan, "The Sawyer", with main floor bonus room.

- 5 Bed | 4 Bath | 3 Car
- Marvin windows
- Granite counters, decorator tile backsplash, solid hardwood floors
- 10' Ceilings & 8' Doors on Main option
- Hidden Pantry
- Drop Zone with Lockers option
- Master suite sitting room
- Master bath spa tub and/or large walk-in shower with double shower head
- Executive Style side load 4 car garage option
- Extra deep garage
- Modern, Craftsman or Cape Cod (with wrap around porch) Elevation options.

**ADVANTAGE  
DEVELOPMENT INC**  
innovative style...innovative builder  
homes by Alan Hans

[www.advantagedevelopmentinc.com](http://www.advantagedevelopmentinc.com)



SALES BY:

**Jenn Bennett**  
402-689-2378

**Berkshire Hathaway  
HomeServices  
Ambassador Real Estate**

PRICE OF ENTRY:

**\$481,189**

(Lot Included)

FINISHED SQ. FT.:

**2,824**



# 20

## WINDGATE RANCH

ELKHORN

20763 Pine St.



SALES BY:

**Brian Wilson**  
**402-850-0731**

**CBSHome**  
**Real Estate**

PRICE OF ENTRY:

**\$517,900**

(Lot Included)

FINISHED SQ. FT.:

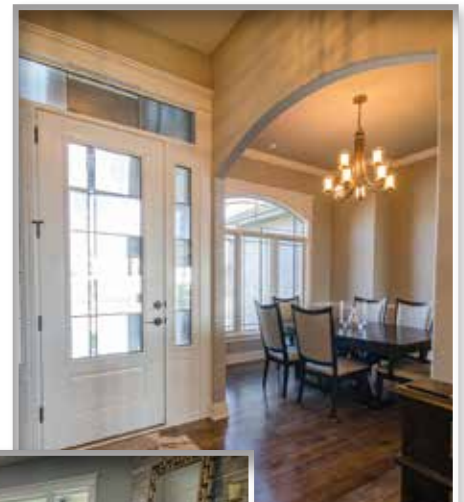
**3,450**



### 2053 PLAN

This 4 bed, 4 car, ranch style home is located on a view lot in popular Windgate Ranch in Elkhorn. The home is 3,450 FSF and is loaded with extras. Hardi Plank Siding, Pella Windows, 2 fireplaces, custom wet bar, granite counters and custom birch cabinets are just some of the standard features in this home. Covered composite deck, landscaping, craftsman trim, luxurious master suite with full bath including a walk-in shower, double vanity and whirlpool tub make this a forever home. Large open kitchen with a walk-in pantry, massive island and stainless steel appliances make cooking fun. The lower level has 2 beds, rec room, game area, stone fireplace and wet bar. High quality finishes in every Al Belt Custom Home.

Al Belt builds 30, quality-crafted homes per year. Please call Brian Wilson to discuss building your dream home on your lot or ours.



[www.albeltcustomhomes.com](http://www.albeltcustomhomes.com)

PRESENTING SPONSOR







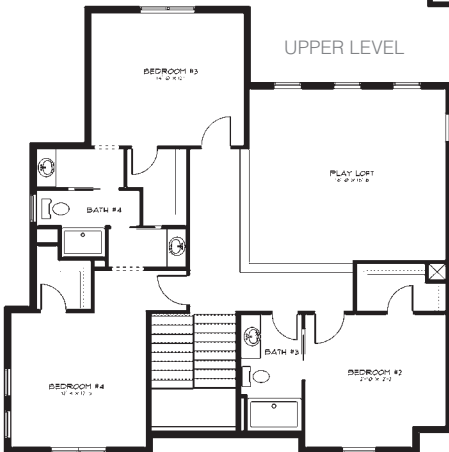
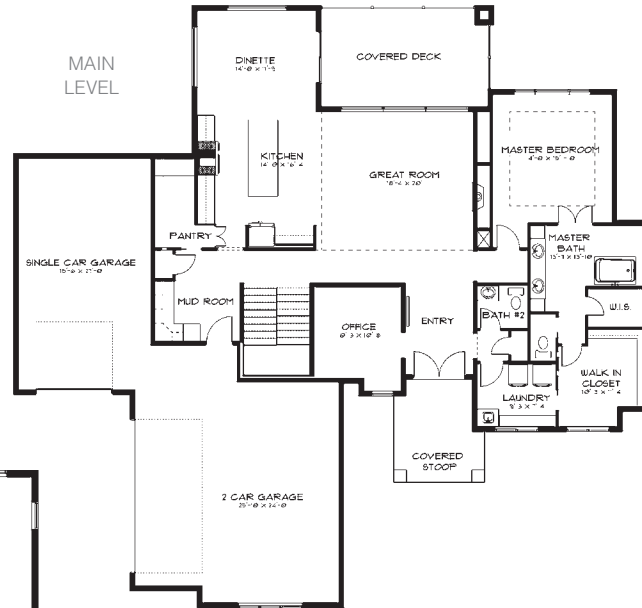
21

**WINDGATE II**  
ELKHORN

21118 Cedar St.

**VINTAGE MODERN**

Nathan Homes newest design gives homage to the past with reclaimed artifacts incorporated in a whole new way. Fresh approach to classic architecture embraces new forms and colors in this 1.5 story functional home. The journey begins with the imported Italian gourmet gas range which anchors the huge center island, professional refrigerator/freezer that sits comfortably with a reclaimed pantry door, distressed flooring and massive windows that brings in a light and airy feeling. The skillfully designed fireplace/entertainment wall is another focal point in the open floor plan. Main level master bathroom with imported tile, free standing tub and stunning dual vanities. Laundry room is conveniently placed just off the master bathroom. The master craftsman didn't stop on the tv wall, but carried their art to the entry ceiling and main level office. Upstairs the "loft" space becomes a hideaway for the family or kids. Unique tile design in onsite bedroom is surely



a show stopper. Jack and Jill bedrooms have embraced the roof line creating a spacious feeling to the rooms. Huge walkout basement is framed and ready to finish to your liking with space for media area, game area, bar, bedroom, bathroom and massive storage. Nathan Homes a truly custom home experience with Laid Back Luxury! Complete design services included with every Nathan Home.

SALES BY:  
**Sallie Elliott**  
**402-630-5953**  
**Priority Group**  
**Berkshire Hathaway**  
**HomeServices**  
**Ambassador Real**  
**Estate**

PRICE OF ENTRY:  
**\$694,900**  
(Lot Included)

FINISHED SQ. FT.:  
**3,337**



[www.nathanhomesomaha.com](http://www.nathanhomesomaha.com)



PRESENTING SPONSOR



**FRIGIDAIRE**

Professional Series

**YOUR HOME SAYS A LOT ABOUT YOU.  
WE'RE HERE TO LISTEN.**

Your home is a reflection of you. Ferguson's product experts are here to listen to every detail of your vision, and we'll work alongside you and your designer, builder or remodeler to bring it to life. Our product experts will help you find the perfect products from the finest bath, kitchen and lighting brands in the world. Request an appointment with your own personal Ferguson product expert and let us discover the possibilities for your next project.

**Visit [FergusonShowrooms.com](http://FergusonShowrooms.com) to get started.**

**FERGUSON**<sup>®</sup>  
*Bath, Kitchen & Lighting Gallery*

**OMAHA**  
6780 S 118TH ST.  
(402) 331-0662

**FACTORY DIRECT**  
**APPLIANCE**  
— A FERGUSON ENTERPRISE —

**OMAHA**  
9770 S 142ND ST.  
(402) 891-6500

[FergusonShowrooms.com](http://FergusonShowrooms.com)

©2017 Ferguson Enterprises, Inc. 0317 418833



**Model Home Now for Sale**

**22**

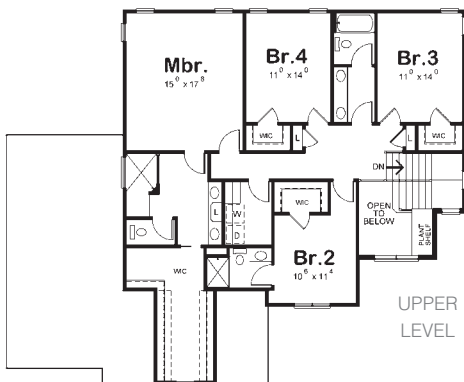
**WINDGATE RANCH  
ELKHORN**

**1823 S 211th St.**

**CARACAO IV**

- Executive 4 Bedroom, 4 Bath,, 2 Story, 3 Car (with Openers)
- Granite or Quartz Counter Tops (Throughout)
- Gourmet Kitchen with Large Eat Up Island, Gas Range with Hood & Walk-in Pantry & Wood Floors
- Large Family Room with Linear Fireplace & Wood Floors
- All Bedrooms have Bath Access
- Utility Room on 2nd Floor

- Master Bath boasts of Double Sinks, Large Walk-in Shower, and Huge Closet
- Tile Floors In All Baths & Laundry Room
- Covered Patio
- HERS Energy (54) Rated With Dual Heat Zones
- Drop Zone & X Bath off Garage
- Across from Park- South Facing
- Also OPEN: Ranch at 1703 S 208th \$479,950 (Belize V)



SALES BY:

**John Rohwer  
402-677-1111**

**Del Andresen  
402-690-2288**

**CBSHome  
Real Estate**

PRICE OF ENTRY:

**\$439,950**

(Lot Included)

FINISHED SQ. FT.:

**2,778**



[www.bcihomesomaha.com](http://www.bcihomesomaha.com)



PRESENTING SPONSOR



# Now you're cooking.



## Comfort in your home.

When you choose natural gas appliances for your home you are making a responsible energy choice. Natural gas is efficient, reliable, comfortable and clean. Homes with all natural gas appliances can save up to \$1,124 annually!

For rebate information, contact our Marketing Department | 402.504.7981



# Clean, affordable natural gas.

Homes with natural gas appliances reduce carbon dioxide emissions up to 75 percent compared to all-electric homes. With lower energy bills and convenient amenities, natural gas is the right choice for the planet and your family.



**METROPOLITAN**  
UTILITIES DISTRICT

*Proud sponsor of the 2017 Parade of Homes*

[mudomaha.com](http://mudomaha.com)





# 23

## WINDGATE RANCH ELKHORN

2114 S 209th St.



SALES BY:

**Steve Larsen**  
**402-672-5450**

**CBSHome**  
**Real Estate**

PRICE OF ENTRY:

**\$599,000**

(Lot Included)

FINISHED SQ. FT.:

**3,376**



## WILLIAMSBURG

Ideal Designs Custom Homes, Inc. is a custom builder that prides themselves in customer satisfaction, service and their attention to detail shows in every single home they build. Our new floor plan is an open plan that is warm and inviting. The entry features a large 2 story entry with open stair case, flex room/ office, two story catwalk, large kitchen, walk-in pantry, 4 bedrooms, loft area, jack and Jill bathroom, large master suite, large master bathroom, free standing tub with fireplace and walk-in shower. This 1.5 story is one of a kind, stop by and you will not be disappointed!!



[www.idealdesignsomaha.com](http://www.idealdesignsomaha.com)

PRESENTING SPONSOR





24

WINDGATE  
RANCH  
ELKHORN

2002 S 211th St.

ASHTON

New stunning 2 story plan by Nilius Custom Builders. Open, bright plan great for entertaining. Gourmet kitchen with large island and walkin pantry. Back staircase from locker/drop zone. The 3 season room has a fire place and wood ceiling, you will love this area. 4 car garage with staircase going directly to the basement. Loads of designer features, heated floors in Master bath. Large laundry room with many built ins. Designer features through out. Call Tracy Paulsen for info 402-690-7525

SALES BY:

**Tracy Paulsen**  
**402-690-7525**

**Berkshire Hathaway**  
**HomeServices**  
**Ambassador Real Estate**

PRICE OF ENTRY:

**\$539,900**

(Lot Included)

FINISHED SQ. FT.:

**2,986**



**NILIUS**  
CUSTOM HOMES  
THE NEXT LEVEL  
402-578-6900





# LAMP RYNE LARSON

*Leaving a legacy to our communities through our work with builders, developers and home buyers.*

14710 West Dodge Road | Omaha, NE 68154  
402.496.2498 | LRA-inc.com

## LOOK FOR



*Coming September 2017*



*Coming November 2017*



\$659,000\*

**H3 CUSTOM HOMES ORIGINAL**  
Ranch View Estates 3 | 1910 S. 214 Avenue



**HOMES**

A lush modern farmhouse situated on walk-out treed lot. Just over 3500 sq. ft. of sleek lines fulfill the interior with a charming and cozy place in which to live, entertain and create nostalgia for years to come. Everything you love about traditional, plus modern and tasteful conveniences you've always dreamed of.



THE  
**JACOBSEN**  
GROUP

Kristen Wehner Jacobsen, REALTOR



[www.H3CustomHomes.com](http://www.H3CustomHomes.com)

\*Pricing subject to change.

402.672.7701, [KWJacobsen@npdodge.com](mailto:KWJacobsen@npdodge.com)





# 25

## WINDGATE RANCH ELKHORN

20756 Pine St.



### PRESTON

Enjoy all that the Paradise Preston floor plan has to offer. This 5 bedroom, 4 bath home has birch cabinets with granite tops, tile bath floors and a master suite with a walk-in shower and huge closet. Main floor has hickory floors through the kitchen, dinette and great room. You will love the open floor plan and finished basement with wet bar.

SALES BY:  
**Greg Haer**  
**402-677-8380**

**CBSHome**  
**Real Estate**

PRICE OF ENTRY:  
**\$448,990**  
(Lot Included)

FINISHED SQ. FT.:  
**3,357**



[www.paradisehomesomaha.com](http://www.paradisehomesomaha.com)



# 26

## WINDGATE RANCH ELKHORN

1317 S 208th St.



SALES BY:

**Aaron Aulner**  
**402-657-1229**

**Keller Williams**  
**Real Estate**

PRICE OF ENTRY:

**\$464,900**

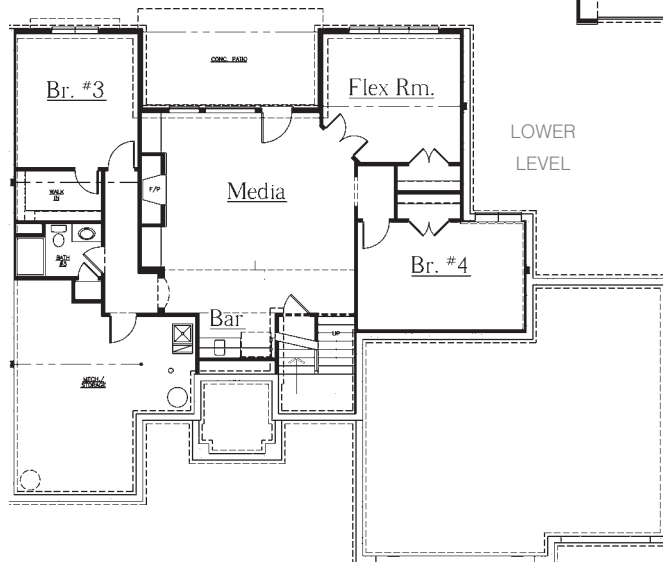
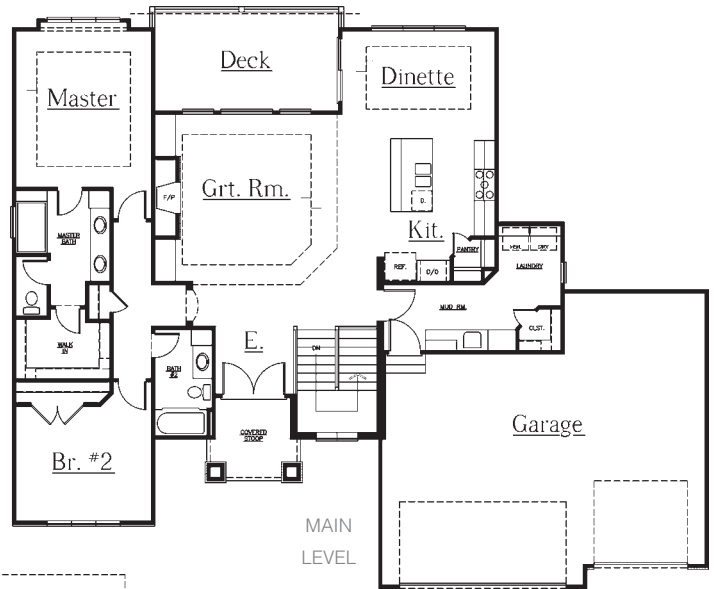
(Lot Included)

FINISHED SQ. FT.:

**3,060**

### SAN JOSE

Welcome to Thomas David's San Jose Ranch! This rustic themed ranch home offers 5 bedrooms, 3 baths and an oversized 3 car garage. The double door entry welcomes you in to the great room which flows to the kitchen and dinette. The open main floor living space extends to the large covered deck. This home is packed with high-end finishes you deserve: Custom Cabinetry, Quartz Counters, Engineered Wood Flooring, Tiled Floors and Showers!



**THOMAS DAVID**  
*fine homes*

*A Step Above*

[www.tdbuilders.com](http://www.tdbuilders.com)

PRESENTING SPONSOR





27

THE  
PRAIRIES  
ELKHORN

1514 S 218th Ave.

THE SCION

The Scion is reminiscent of an Old World Mediterranean estate as though it were situated on the hills of Tuscany. Master craftsman labored over the earthen stucco finish, molding, iron doors and so many details! This home will whisk you away when you experience treasured artistry and intriguing details. The 7,002 FSF home offers 6 bedrooms, 5 bathrooms, vaulted ceilings in master bedroom and bathroom with an exquisite built in jacuzzi/walk-in shower area, large theater room with built-in bar area off of the downstairs living room, exercise room off of the garage, basement wine cellar, large butler's pantry off of kitchen, bonus kids loft playroom and so much more.

Absolute Customs provides beautifully designed home plans, each of which can be customized in any way to incorporate any and all features that you request. Only the finest materials are used. Imagine your home a showplace with unique ceiling treatments, impressive moldings, kitchens with custom cabinetry and granite countertops, hardwood floors, walls of windows and much more!

- 100% Customizable Floor Plans
- Wholesale cost plus fixed fee pricing on all builds
- Interior Design & Selection Coordination



[www.absolutecustoms.com](http://www.absolutecustoms.com)



SALES BY:

**Ann Townsend**  
402-706-3037

**Michael Maley**  
402-981-7400

**CBSHome**  
**Real Estate**

PRICE OF ENTRY:

**\$1,299,000**  
(Lot Included)

FINISHED SQ. FT.:

**7,002**



“

It should be easy to keep  
my home looking great.”



Transform your home with the warmth and beauty of Pella® Designer Series® wood windows and patio doors. They give you less to worry about and more ways to decorate your home. Pella's between-the-glass blinds and shades stay protected from dust and damage, so they don't need constant cleaning. And our exclusive snap-in technology makes them easy for you to change whenever you want a new look. More choices mean more style and convenience in your home.

#### PELLA WINDOW & DOOR SHOWROOM

OMAHA, NE  
9845 SOUTH 142<sup>ND</sup> STREET  
402.331.9225

[PellaOmaha.com](http://PellaOmaha.com)

© 2016 Pella Corporation



# 28

**REMINGTON  
RIDGE  
GRETNA**

7855 S 194th St.

## 1758 RANCH

Silverstone Building Co.'s 1758 ranch is a popular "split" ranch plan featuring the master suite opposite secondary bedrooms on the main. This efficient ranch plan is a little brother of Silverstone's 1996 plan providing for open living and entertainment areas, ample storage, and excellent basement finish options.



SALES BY:

**Ben Proctor  
402-965-1848**

**PinPoint Homes Sales  
Berkshire Hathaway  
HomeServices  
Ambassador Real Estate**



Silverstone Building embraces evolving change that the industry provides. Homes are built with consistent attention to energy efficiency, structural integrity, and trending design. Every home features efficient building components and have a feeling of "Wow!" every time. Contact us for more information on our process and a true custom building experience. Silverstone Building Co. is currently building at new communities in Gretna, Elkhorn, Millard, and Bennington.

PRICE OF ENTRY:

**\$355,400  
(Lot Included)**

FINISHED SQ. FT.:

**2,538**





# 29

## ASPEN CREEK GRETNA

10611 S 188th Ave.



SALES BY:

**Pete Sabaliauskas**  
**402-250-3431**

**CBSHome**  
**Real Estate**

PRICE OF ENTRY:

**\$375,778**

(Lot Included)

FINISHED SQ. FT.:

**2,918**

### LUCAS 1749

Castlebridge Homes popular "Lucas 1749" ranch plan. This open floor plan is perfect for entertaining your guests. Some of the quality features in this home include: a deluxe master bedroom suite with walk-in shower, French doors leading to your main floor den, granite through-out, custom built-ins, wine frig and a walk-out finished basement with two bedrooms, full bath, rec room, game room and wet-bar. You will be certain to enjoy your evenings on your covered deck.



## Castlebridge Homes

PLEASING YOU, PLEASURES US!

[www.castlebridgehomesomaha.com](http://www.castlebridgehomesomaha.com)

PRESENTING SPONSOR

  
**METROPOLITAN**  
UTILITIES DISTRICT



# 30

## ASPEN CREEK GRETNA

10619 S 191 Ave.

### SOLITUDE

This fabulous walk out ranch home was created for today's lifestyle. The open and spacious floor plan includes: great room with a unique fireplace, gourmet kitchen with all the amenities, large dinette, private master suite with direct access to the laundry, 2 secondary bedrooms on the main floor and a convenient drop zone at the garage entry. Features include: Wood floor throughout the great room, kitchen and dinette, custom cabinets, granite, upgraded appliances, walk in pantry, ceramic baths with quartz vanities and wide painted woodwork throughout. Basement is fully finished with a 4th bedroom, 3/4 bath, huge family room and wet bar. Relax on the covered deck or large patio. Come and experience the quality of a Hill Custom Home.

SALES BY:

**Jan Hill**

**402-305-8116**

**John Hanson**

**402-981-8950**

**NP Dodge  
Real Estate**

PRICE OF ENTRY:

**\$449,712**

(Lot Included)

FINISHED SQ. FT.:

**3,489**



[www.hillcustomhomesinc.com](http://www.hillcustomhomesinc.com)



PRESENTING SPONSOR



# 31

## ASPEN CREEK GRETNA

10631 S 191st Ave.



SALES BY:

**Missy Turner**  
**402-630-9346**

**CBSHome**  
**Real Estate**

### MONTEREY

Spacious walkout ranch with open flr plan features wd flrs, ceiling treatments, and wall niches. Great Rm w/ tall windows, high ceilings, cosmo fp with built-ins. Spacious kitchen has custom Alder cabinets, granite counters with tile backsplash, island, chefs pantry and has dinette area opening to deck. Main flr office has pocket doors. Mstr Suite w/ double vanity, tiled shower, & walk -in closet. Finished basement with Rec Room w/ wet bar, bonus rm, 2 BRs w/ walk-in closet & ¾ bath. Contact Missy Turner at 402.630.9346 or missy.turner@cbshome.com for more info.

PRICE OF ENTRY:

**\$369,200**

(Lot Not Included)

FINISHED SQ. FT.:

**3,577**



# JECK & COMPANY BUILDERS

*Exceptional Custom Homes*

[jeckandcompany.com](http://jeckandcompany.com)

PRESENTING SPONSOR





# 32

## ASPEN CREEK GRETTA

10640 S 191st Ave.

### VENETO

Mindfully master crafted for everyday living & entertaining; this home boasts amenities you want & deserve. Features include a WIDE open floor plan with 9' ceilings, engineered hardwood floors, quartz counters, custom birch cabinets with LED lighting, HUGE kitchen island & walk-in pantry along with Caseta lighting control system & so much more! Escape to the tranquil Master suite with an impressive oversized walk-in closet & spa-like master bath with walk-in shower. Discover a spacious lower level with gas fireplace, wet bar, & storage galore! Over 35 years of quality builder experience combined with the showcase amenities you want this home is sure to impress!



SALES BY:

**Carrie Johnson**  
**402-301-5500**

**Berkshire Hathaway  
HomeServices  
Ambassador Real  
Estate**

TYPICAL BUILD RANGE:

**\$315k-\$365k**  
(Lot Included)

FINISHED SQ. FT.:

**2,992**



[www.buildpinecrest.com](http://www.buildpinecrest.com)



**Financing everything in one stop**

**is worth celebrating!**



**MORTGAGE LENDING**



**Guthrie Steen** NMLS 400111  
GSteen@PremierBankNE.com



**Gregg Bailey** NMLS 400296  
GBailey@PremierBankNE.com

**CONSTRUCTION LENDING**



**Michael Bittner** NMLS 408474  
MBittner@PremierBankNE.com



**Alan Bost** NMLS 409614  
ABost@PremierBankNE.com



**Todd Clevenger** NMLS 407959  
TClevenger@PremierBankNE.com



**Osbaldo Sanchez** NMLS 1055272  
OSanchez@PremierBankNE.com

[www.PremierBankNE.com](http://www.PremierBankNE.com) | 402.558.8000



Member FDIC



# 33

## ASPEN CREEK GRETNA

10636 S 191st Ave.

### CHATEAU

The "Chateau" by M. J. Design/Build, Inc. features 4 bedrooms, 4 bathrooms, including a Jack and Jill bath upstairs, and a bonus area off the large upstairs laundry that can be used in a multitude of ways. A "hidden" flex room that can be used as a toy room, office, dining room, or guest room. This lovely 2 story home offers so many choices and "affordable quality" at its best. We invite you to check out the many styles of our total custom homes at [www.mjdesignbuild.com](http://www.mjdesignbuild.com)



SALES BY:

**Katie Adler**  
**402-510-8268**

**Jackie Wilkie**  
**402-871-3172**  
**Nebraska Realty**

PRICE OF ENTRY:

**\$311,000**  
**(Lot Not Included)**

FINISHED SQ. FT.:

**2,378**



PRESENTING SPONSOR



# 34

## ASPEN CREEK GRETNA

19113 Hampton Dr.



SALES BY:

**Marie Otis**  
402-670-8775

**CBS Home  
Real Estate**

PRICE OF ENTRY:

**\$389,843**

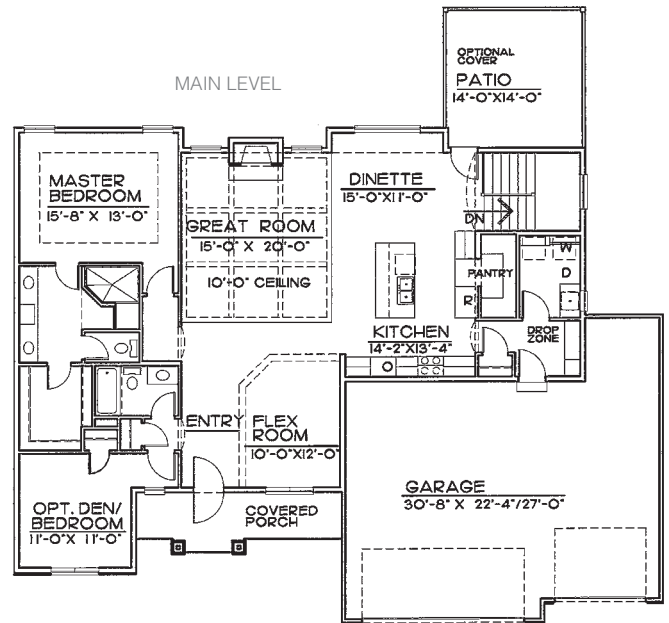
(Lot Included)

FINISHED SQ. FT.:

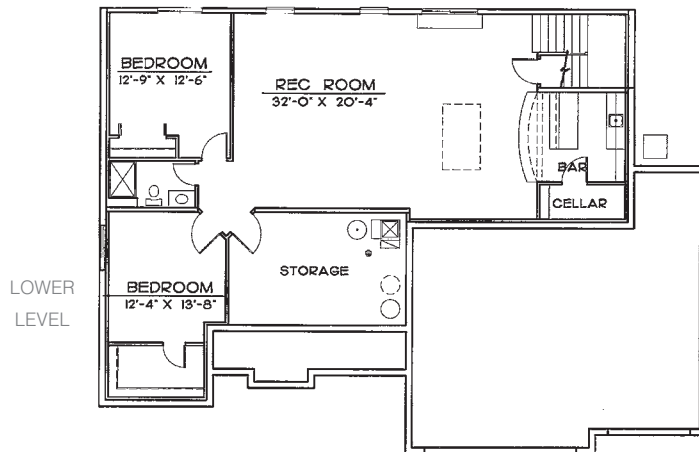
**3,175**

### THE MONTGOMERY

Nelson Builders presents The Montgomery Ranch Plan. This home offers 3,175 sq ft, 4 beds, 3 baths, and a 3 car garage. Entertaining will come with ease in the spacious kitchen that features granite, Stainless Steel Appliances, a gas cooktop, stainless steel hood, beautiful tile, and large walk-in pantry. Family friendly drop-zone and main floor laundry. The spacious great room is complete with a stone fireplace, large windows, and a fantastic ceiling detail. The large master suite is sure to impress with walk-in shower, double vanity, and spacious walk-in closet. The finished walk-out lower level features two bedrooms, a bathroom, and a fabulous wet bar perfect for entertaining.



[www.nelsonbuildersomaha.com](http://www.nelsonbuildersomaha.com)



PRESENTING SPONSOR





35

ASPEN  
CREEK  
GRETNA

10613 S 189th St.

## EASTRIDGE II

Trademark Homes, Inc. is a custom builder that prides themselves in customer satisfaction and their attention to detail shows in every single home they build. Our new floor plan is an open plan that is warm and inviting. The entry is large and open. Its spacious eat in kitchen includes a hidden walk-in pantry, custom birch cabinets, granite counter tops, and decorative tile backsplash. The living room has a linear fireplace. On the main level you will also find an office with French doors, drop zone area and a bench with hooks. The second level includes a master suite, loft space perfect for kids, 3 bedrooms and a second floor laundry. Come check out the detail and finishes you will not be disappointed!!



SALES BY:

**Dustin Hill**  
**402-850-1611**

**Berkshire Hathaway  
HomeServices  
Ambassador Real Estate**

PRICE OF ENTRY:

**\$349,918**  
(Lot Included)

FINISHED SQ. FT.:

**2,445**

**Trademark Homes**  
A Division of Ideal Designs Custom Homes

[www.trademarkomaha.com](http://www.trademarkomaha.com)



# 36

ASPEN  
CREEK  
GRETNA

18724 Alder Dr.



SALES BY:

**Michael Maley**  
**402-981-7400**

**CBSHome**  
**Real Estate**

PRICE OF ENTRY:

**\$389,000**

(Lot Included)

FINISHED SQ. FT.:

**2,589**



## EASTRIDGE

The Eastridge is an exciting, all original, 2 story home that incorporates Widhalm's signature transitional styling with timeless quality. This innovative floor plan is an example of Widhalm's creativity and attention to detail. The idea behind this home was to consider all the needs of a growing family without sacrificing on present day conveniences or sophistication. This home features 4 bedrooms, 3 bathrooms, and a 4 car garage! We invite you to come experience our approach to modern living. Widhalm Custom Homes, Inc. builds throughout the metro area with numerous lot and floor plan options to work from with complete customization available.



**WIDHALM**  
**CUSTOM HOMES INC.**

[www.widhalmcustomhomes.com](http://www.widhalmcustomhomes.com)

PRESENTING SPONSOR





**37**

**ASPEN  
CREEK  
GRETNA**

**10644 S 191st Ave.**

**LILLY II**

Built by Woodland Homes, this 4 bedroom / 4 bath, high efficiency custom two story has many fine finishes that include:

- stone front
- large front porch
- barn doors at flex room
- custom birch cabinets
- quartz counter tops
- wood floors
- rectangular/stone fireplace
- walk through pantry
- study area
- covered patio
- second floor loft area
- gas cook top with stainless steel vented hood

The Lily II in Aspen Creek, has close access to I-80 with two new schools being built in the area.

SALES BY:

**Ken Murray  
402-690-6572**

**CBSHome  
Real Estate**

PRICE OF ENTRY:

**\$414,345**

(Lot Included)

FINISHED SQ. FT.:

**2,933**



[www.woodlandhomesomaha.com](http://www.woodlandhomesomaha.com)



PRESENTING SPONSOR



# CHOOSE 100% HARDIE™

for authentic character and  
uncompromising performance

**AND A 10-YEAR SERVICE COMMITMENT THAT  
COVERS 100% OF LABOR AND MATERIAL COSTS.**

**No deductible. No middlemen. No hassle.**

We are so confident in our 100% HARDIE exterior, that if you encounter any siding or trim issues during the first 10 years, simply call James Hardie directly. We'll come to your home and correct the problem at no cost to you. It's another reason to insist on America's #1 brand of siding.

**Ask your builder for more details  
or visit [choosehardie.com](http://choosehardie.com)**



**LEGACYHOMES**

[LegacyHomesOmaha.com](http://LegacyHomesOmaha.com)

(402) 884-3202 x100

\*Coverage is for siding or trim issues related to cladding installation or manufacturing defects. All other terms, conditions and exclusions of James Hardie standard product warranties apply. James Hardie assumes no responsibility for any non-cladding related problems.



**JamesHardie**

Siding | Trim

© 2016 James Hardie Building Products Inc. All Rights Reserved. TM, SM, and © denote trademarks or registered trademarks of James Hardie Technology Limited. The  is a registered trademark of James Hardie Technology Limited. AD1609 03/16





# 38

## ASPEN CREEK GRETNA

10617 S 189th St.

### LOUDEN IV

Woodland Homes presents the Loudon IV ranch, open floor plan in Aspen Creek. New elementary and middle schools opening in the Fall, 2017, makes an easy walk to school and home. This ranch floor plan offers 4 bedrooms, 3 baths, with an oversize, 3 car tandem garage. Convenient bench with lockers off garage makes for quick and easy storage. Kitchen features quartz counters, walk in pantry, dinette area and so much more. Finished lower is perfect to entertain from with rec room, wet bar and cozy fireplace. Both bedrooms in lower level each have their own walk in closet. Woodland Homes, a premier builder with over 38 years of experience.



SALES BY:

**Jeff Elsberry**  
**402-690-0900**

**CBSHome**  
**Real Estate**

PRICE OF ENTRY:

**\$443,680**  
(Lot Included)

FINISHED SQ. FT.:

**3,486**

# Woodland Homes



[www.woodlandhomesomaha.com](http://www.woodlandhomesomaha.com)





# 39

## TIBURON OMAHA

9606 S 179th St.



SALES BY:

**Pat Lichter**  
**402-333-5008**  
**NP Dodge**  
**Real Estate**



**ADC**  
[www.adchomes.com](http://www.adchomes.com)

### THE MEADOW

This Magnificent Ranch plan with a modern flair, includes a finished basement for a total of 3,277 finished square feet. Included in the open plan is a modern kitchen featuring granite countertops with a waterfall edge to the floor on the island. Granite countertops are included throughout, including the laundry room. The master suite incorporates a whirlpool tub and walk-in shower. A modern linear fireplace, solid core doors and oversized woodwork throughout, as well as custom wrought iron railing complete the modern interior finish. The basement includes two bedrooms as well as a full wet bar which features an island that includes a granite waterfall countertop.

PRICE OF ENTRY:

**\$455,000**  
(Lot Included)

FINISHED SQ. FT.:

**3,277**



PRESENTING SPONSOR





# 40

## SOUTHERN PINES GRETN

16822 Aurora Cir.

### THE TURQUOISE

Welcome to the “Turquoise” by Richland Homes. Make sure you stop in to see this new, mid-size, open concept ranch boasting cuteness through-out. You’ll fall in love with the gorgeous Engineered wood floors, Quartz kitchen island, Birch cabinets, Slate appliances, Corner fireplace and pantry with ample storage.

There is a functional drop zone at the garage entry that leads directly into the Laundry room, with easy access to the Master closet through a pocket door. This model home shows as a 4 bed, 2.5 bath, plus a finished Rec Room in the lower level, it is easy to see why this home is undeniably the best value at \$260,000. Other incredible standard features in all Richland Homes include: a Humidifier, a Sprinkler system, Brushed nickel hardware & light fixtures, LED under cabinet lighting, Two trees and so much more.

There are four modern exterior elevations to choose from & a long menu of items to select from to make this your own home, every time.

Contact Jill Marie Bartling at 402-215- 6715 for more information on building with Richland Homes.



SALES BY:

**Jill Marie Bartling**  
**402-215-6715**

**CBSHome**  
**Real Estate**

PRICE OF ENTRY:

**\$260,000**

(Lot Included)

FINISHED SQ. FT.:

**2,532**



[www.buildwithrichland.com](http://www.buildwithrichland.com)



# 41

## SOUTHERN PINES GRETNA

16823 Aurora Cir.



SALES BY:

**Jill Marie Bartling**  
**402-215-6715**

**CBSHome**  
**Real Estate**

PRICE OF ENTRY:

**\$278,000**

(Lot Included)

FINISHED SQ. FT.:

**2,357**

### THE QUARTZ

Welcome to the “QUARTZ” by Richland Homes. This brand new, open concept, two story plan meets the current demands of today’s home buyers for under \$300K. You’ll be lured into the main entry, past the Flex room, by an abundance of natural light and gorgeous Engineered wood floors. A large kitchen and family room combine to create an amazing entertainment space featuring a striking floor to ceiling stone fireplace, Quartz kitchen island, Birch cabinets, Moen faucets and the hidden pantry is a dream! The functional drop zone from the garage to the kitchen is definitely a favorite feature.

The second floor has an extra wide landing at the top of stairs, a sizeable laundry room outside of the master bedroom plus three spacious bedrooms. Other incredible standard features in all Richland Homes include: a Humidifier, Sprinkler system, Brushed nickel hardware & light fixtures, LED under cabinet lighting, Two trees and too many more to list.

There are three modern exterior elevations to choose from and a long menu of items to select from to make this your own home every time. Contact Jill Marie Bartling at 402-215-6715 for more information on building with Richland Homes.



[www.buildwithrichland.com](http://www.buildwithrichland.com)

PRESENTING SPONSOR





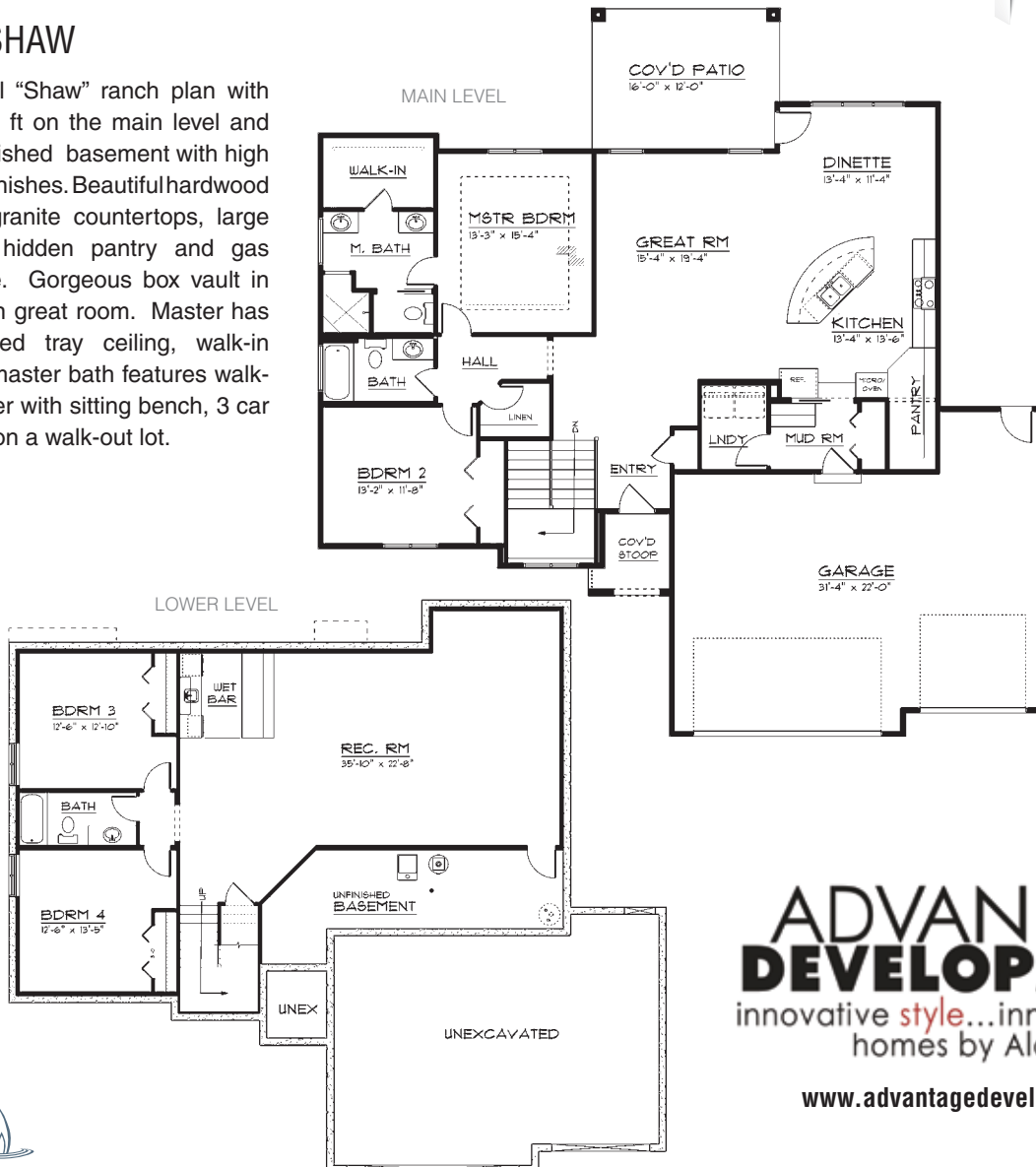
# 42

## NORTH SHORE PAPILLION

12027 Pintail Dr.

### THE SHAW

Beautiful "Shaw" ranch plan with 1724 sq ft on the main level and 1294 finished basement with high quality finishes. Beautiful hardwood floors, granite countertops, large walk-in hidden pantry and gas fireplace. Gorgeous box vault in ceiling in great room. Master has illuminated tray ceiling, walk-in closet, master bath features walk-in shower with sitting bench, 3 car garage on a walk-out lot.



SALES BY:

**Doyle Ollis**  
Ollis Real Estate  
402-214-22  
CBSHome  
Real Estate

PRICE OF ENTRY:

**\$413,761**  
(Lot Included)

FINISHED SQ. FT.:

**3,051**

**ADVANTAGE DEVELOPMENT**  
innovative style...innovative builder  
homes by Alan Hans

[www.advantagedevelopmentinc.com](http://www.advantagedevelopmentinc.com)



# 43

**NORTH  
SHORE  
PAPILLION**

12458 Caspian Dr.



SALES BY:

**Brian Wilson**  
402-850-0731

**CBSHome**  
Real Estate

PRICE OF ENTRY:

**\$459,900**

(Lot Included)

FINISHED SQ. FT.:

**3,235**



[www.albeltcustomhomes.com](http://www.albeltcustomhomes.com)

## 1935 PLAN

Come visit Al Belt Custom Homes 1935 Plan. This ranch style home is designed for comfortable living. The home has 4 bedrooms, 4 baths and an oversized 3 car garage. High quality finishes and products make this home special. The lower level boasts a walk-out, stone fire pit, fantastic wet bar and lots of space for entertaining. With over 3,200 finished square feet, you won't be disappointed.

Al Belt builds 30, quality-crafted homes per year. Please call Brian Wilson to discuss building your dream home on your lot or ours.



PRESENTING SPONSOR





# 44

## NORTH SHORE PAPILLION

10104 S 124th Ave.

### MONTEREY

Spacious walkout ranch with open floor plan features wood floors, ceiling treatments, and wall niches. Great room with tall windows, high ceilings, cosmo fireplace with built-ins. Spacious kitchen has custom Alder cabinets, granite counters with tile backsplash, island, chefs pantry and has dinette area opening to deck. Main floor office has pocket doors. Mastr suite with double vanity, tiled shower, & walk-in closet. Finished basement with rec room with wet bar, bonus room, 2 bedrooms with walk-in closet & 3/4 bath. Contact Missy Turner at 402.630.9346 or missy.turner@cbshome.com for more info.



SALES BY:

**Missy Turner**  
**402-630-9346**

**CBSHome**  
**Real Estate**

PRICE OF ENTRY:

**\$379,460**

(Lot Not Included)

FINISHED SQ. FT.:

**3,577**



# JECK & COMPANY

## BUILDERS

*Exceptional Custom Homes*

[jeckandcompany.com](http://jeckandcompany.com)



# 45

**NORTH  
SHORE  
PAPILLION**

12458 Osprey Lane



SALES BY:

**Tim Sabaliauskas**  
**402-708-4881**

**Nebraska Realty**

PRICE OF ENTRY:

**\$345,000**

(Lot Not Included)

FINISHED SQ. FT.:

**2,949**

## CHAYTON

The "Chayton" by M.J. Design/Build, Inc. Privacy is optimized in this unique ranch floor plan with the owners suite in its own private wing of the home. 5 bedrooms total with 3 bedrooms upstairs and 2 bedrooms in finished basement area. Cozy and comfortable living area in walk out basement includes a bar for entertaining. Come check out this new exciting plan by M.J. Design/Build. We feature homes from the 260k - 450K price range.



  
**DESIGN/BUILD, INC.**  
[www.mjdesignbuild.com](http://www.mjdesignbuild.com)

PRESENTING SPONSOR

  
**METROPOLITAN**  
UTILITIES DISTRICT



# 46

## NORTH SHORE PAPILLION

12553 Cove Hollow

### MEADOW IV

Pine Crest Homes presents the Meadow IV, a wonderful 4BR 3BA 2 Story with nearly 2,400 square feet of finished living space. It features super high quality finishes that include a fantastic kitchen with quartz counters, beautiful flooring, birch cabinets, huge pantry and a large island. The upper level offers a spacious Master BR with a beautiful bath, plus 3 other bedrooms and a large media room. Other standard features in our base price are 3 car garage, 9 foot ceilings, covered patio, sprinkler system and much more.

SALES BY:

**Marc Riewer**  
**402-650-9496**

[Marc.Riewer@cbshome.com](mailto:Marc.Riewer@cbshome.com)

**CBSHome**  
**Real Estate**

PRICE OF ENTRY:

**\$327,710**

(Lot Included)

FINISHED SQ. FT.:

**Nearly 2,400**



[www.buildpinecrest.com](http://www.buildpinecrest.com)



# 47

## NORTH SHORE PAPILLION

12020 Pintail Dr.



SALES BY:

**Clinton Boyd**  
**402-290-5043**

**Showcase Homes**  
**Real Estate**

PRICE OF ENTRY:

**\$435,000**

(Lot Included)

FINISHED SQ. FT.:

**3,794**

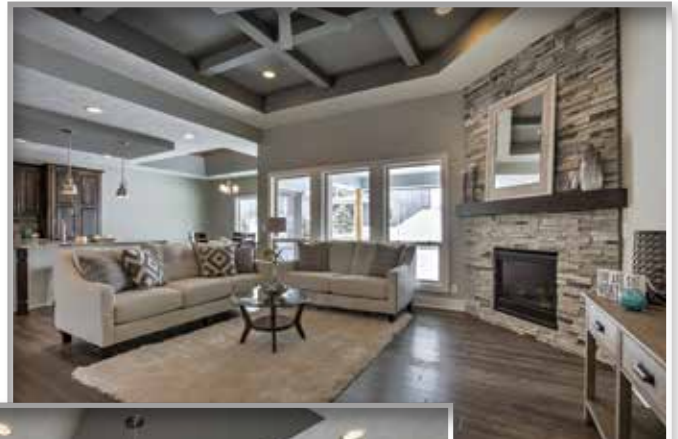
**THIS IS A CAN'T  
MISS HOME  
ON A PARADE TOUR!**

### 2116 RANCH

Showcase Homes ranch has 2,116 sq ft on the main floor with 1,678 sq ft in finished basement that is over 3,794 total square feet finished!

*Home also features:*

- 3 bedrooms on main and 2 in the basement
- 2 full baths and powder bath on main floor and 3/4 bath in basement
- enormous tandem garage
- hidden walk-in pantry
- double oven and gas cooktop
- huge kitchen island with sink
- maple floors in kitchen and great room
- 42" cabinets
- drop zone with lockers
- bookcases with floating shelves in spacious great room
- covered patio and front porch
- fabulous wet bar in basement
- walk-in shower and corner tub in master
- pella windows
- sprinkler system
- high volume ceilings with crown moulding
- large white trim thru out
- laundry tub
- tile and granite in all baths



[www.showcasehomesomaha.com](http://www.showcasehomesomaha.com)

PRESENTING SPONSOR





# 48

## NORTH SHORE PAPILLION

12353 Osprey Lane

### PRESTON

The "Preston" by Timberline Homes features 5 bedrooms, Jack and Jill bath, powder room, huge island, custom cabinets, hickory wood floors, 2 fireplaces, granite, stone, tile, covered deck, wet bar and more. If you are looking to build your dream home call Team Young. We are a total custom builder with over 25 years of experience. Check out [Timberlinehomesomaha.com](http://Timberlinehomesomaha.com) for fabulous, unique home plans and pricing.

SALES BY:

**Todd Young**  
**402-657-5667**

**Brenda Young**  
**402-677-0364**

**Berkshire Hathaway  
HomeServices  
Ambassador Real Estate**

PRICE OF ENTRY:

**\$429,950**

(Lot Included)

FINISHED SQ. FT.:

**3,357**



[timberlinehomesomaha.com](http://timberlinehomesomaha.com)



PRESENTING SPONSOR



# 49

## NORTH SHORE PAPILLION

12031 Pintail Dr.



SALES BY:

**Tracy Zych**  
402-718-5800

**Berkshire Hathaway  
HomeServices  
Ambassador Real Estate**



[www.zychconstruction.com](http://www.zychconstruction.com)

### THE ABIGAIL

Exec walk out ranch ~ Green Space Views!

- Gourmet kitchen with gas cook top, built in SS appliances, walk in pantry & spacious dinette
- Great room with full ht stone fireplace and built in bachelor chests
- Master suite with walk in tile shower, double sink vanities, large walk in closet
- Finished LL with wet bar & pub table, 2 additional guest bedrooms w/ walk in closets 3/4 bath.
- Spacious Laundry room with Sink & cabinetry
- Covered Deck with gas line for BBQ Grill
- Over-sized 3 car garage with openers
- Full Landscape w/ trees
- 5 Yr Extended warranty, mitigated for Radon & Certified High Performance Home

PRICE OF ENTRY:

**\$450,000**

(Lot Included)

FINISHED SQ. FT.:

**3,580**



PRESENTING SPONSOR





# 50

## ASHBURY FARM PAPILLION

11410 S 120 Ave.

### THE PRESTWICK

Birchwood Homes, The “Prestwick” model home is now for sale. This fantastic English, Lux Rustic home at 4612 sq ft is complete with private master suite featuring barrel ceilings, his & her closets, spa shower & soaking tub. You will be impressed with the gourmet style kitchen with huge island, large custom pantry, and superior appliances. You will find large living spaces through out with 10’ and 12’ ceilings. Basement includes 2 bedrooms, Large rec area with English styled brick bar & exterior storage access. Each room has something unique to see.



SALES BY:

**Susan Hancock**  
**402-215-7700**

**NP Dodge**  
**Real Estate**

PRICE OF ENTRY:

**\$874,950**

(Lot Included)

FINISHED SQ. FT.:

**4,612**



**Birchwood**  
**HOMES, INC.**

[birchwoodhomesinc.com](http://birchwoodhomesinc.com)



# 51

## SOUTHBROOK

### PAPILLION

11719 S 109th St.



SALES BY:

**Matt Beers**  
402-681-5420

**CBSHome**  
Real Estate

PRICE OF ENTRY:

**\$376,000**

(Lot Included)

FINISHED SQ. FT.:

**3,157**



## DYNASTY HOMES

| CUSTOM BUILDERS |

[www.dynastyhomesomaha.com](http://www.dynastyhomesomaha.com)



### PINEHURST

Dynasty Homes Pinehurst Two Story. Certified High Performance. All Quartz tops. Linear FP. Highest quality materials and craftsmanship. This home boasts two main floor offices, covered deck, finished basement, and much more. See the Dynasty Difference!



PRESENTING SPONSOR





# 52

## SOUTHBROOK

### PAPILLION

11604 S 110th Ave.

### 1700 PLAN

Open Ranch Plan by Griffin Homes in the lower price range of popular Southbrook, features 3 bedrooms on the main floor, drop zone with bench and cubbies off the garage entry, walk-in pantry, spacious master bedroom and walk-in shower in the master bathroom, It also has a +90 Trane Furnace and Hi-Density Sidewall Insulation. The large unfinished basement has lots of potential for finishing in the future. Can easily finish two more bedrooms in the basement and still have a large rec room.

SALES BY:

**Mitch Griffin**  
**402-659-8568**

**CBSHome**  
**Real Estate**

PRICE OF ENTRY:

**\$295,000**

(Lot Included)

FINISHED SQ. FT.:

**1,700**





# 53

## SOUTHBROOK

PAPILLION

11748 S 110th Ave.



SALES BY:

**Marie Otis**  
**402-670-8775**

**CBS Home**  
**Real Estate**

PRICE OF ENTRY:

**\$354,794**

(Lot Included)



[www.nelsonbuildersomaha.com](http://www.nelsonbuildersomaha.com)

## THE HARRISBURG

Nelson Builders presents The Harrisburg Ranch plan. This home features 10 ft. ceilings throughout the great room and kitchen. Entertaining will be a breeze in the large kitchen-complete with stainless steel appliances, tile backsplash, granite counters, walk-in pantry and a unique "wood tile" floor. Ample amounts of natural light pour in through the windows all over the home- even in the basement! Don't forget about the family-friendly drop zone, covered patio, main floor laundry, and built-in bar downstairs.

FINISHED SQ. FT.:

**2,829**



PRESENTING SPONSOR





# 54

## SOUTHBROOK

### PAPILLION

11517 S 109th St.

### PROLINE 'C'

ProLine Homes 2 story with walkout basement. 4 bedroom, 3 bath, 3 car oversized garage. 4th car tandem garage option also available. Open, bright and airy layout. Curved staircase highlights elegant 2 story foyer. Flex room on main level for dining room or office. Convenient 2nd floor laundry and Jack and Jill bath. Master suite features 5x5 walk-in shower, double sinks, and extra large walk-in closet.

# Pro Line

[www.prolinehomesomaha.com](http://www.prolinehomesomaha.com)

SALES BY:

**John Barrett**  
402-670-9387

**CBSHome**  
**Real Estate**

PRICE OF ENTRY:

**\$299,812**

(Lot Not Included)

FINISHED SQ. FT.:

**2,411**



*Photos of similar home by ProLine*





# 55

## CIMARRON WOODS VILLAS PAPILLION

9902 Olive St.



SALES BY:

**Traci Vacanti**  
**402-672-9071**

**CBSHome**  
**Real Estate**

PRICE OF ENTRY:

**\$389,340**  
(Lot Included)

FINISHED SQ. FT.:

**3,129**

### ASHLEY

The "Ashley" is a beautiful ranch villa by Woodland Homes. The Open floor plan has high ceilings and walls of windows. This fabulous kitchen has birch cabinetry, a HUGE island and a large walk-in pantry. You will see quartz countertops in the kitchen and all three bathrooms.

There is a separate main floor laundry with a folding counter. The good sized master suite has a walk-in snail shower and a safe in the master closet.



This home has great curb appeal with a covered front porch, perfect for afternoon relaxing. The back yard has a covered, low maintenance, composite deck and a patio below.

The walk-out lower level has a stone fireplace, a wet bar with quartz countertops, a rec room, 2 bedrooms & a bathroom. It is a great space for company and entertaining.

# Woodland Homes

[www.woodlandhomesomaha.com](http://www.woodlandhomesomaha.com)

Cimarron Woods Villas provides lawn care and snow removal, giving you more time with family, traveling, enjoying your hobbies, or just relaxing in your beautiful new home.

Walk-out, flat & daylight lots are still available. Reserve yours today!





# Natural gas: Making meals memorable



An empty propane bottle and a raw steak make for a miserable night.



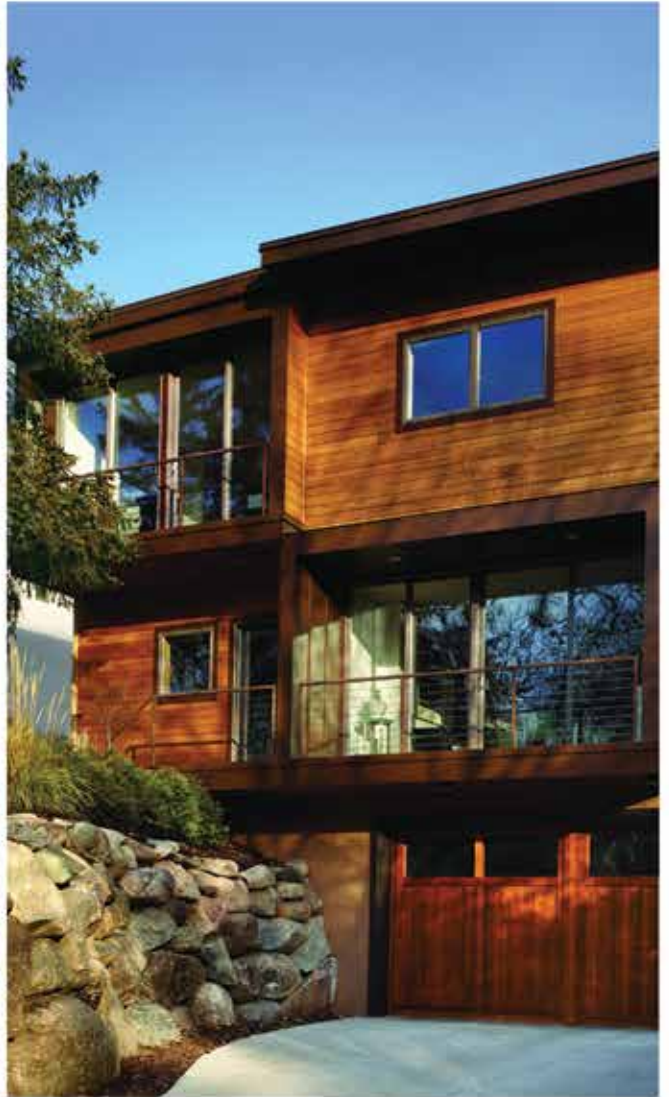
A natural gas grill means a great night and great food.

***Black Hills Energy***





WINDOWS • DOORS  
**Andersen** 



# MORE THAN LUMBER® MILLARD LUMBER

As the most popular Andersen® windows series, the 400 Series brings you the best overall blend of performance and style to satisfy just about any window or door need. Check out Millard Lumber's hands-on showroom to see the 400 Series for yourself.

Andersen® One of the most trusted names in windows and doors.

**Schedule your consultation or visit our showroom today!**

**12900 I Street | Omaha, NE | M-F 7AM-6PM | Sat 8AM-1PM**

**[www.millardlumber.com](http://www.millardlumber.com) | 402.896.2800**

"Andersen" and the AW logo are registered trademarks of Andersen Corporation.

