



BuildOmaha.org

2016
Parade of
HOMES

April 15 - May 1, 2016

Lets Build Omaha Together.

PRESENTING SPONSOR



METROPOLITAN
UTILITIES DISTRICT

COVER COURTESY

**Ferguson Enterprises, Inc
& Nathan Homes, Entry #35**

SEE PAGE 2 FOR ADDITIONAL INFORMATION

2016 PARADE OF HOMES



1726 SOUTH 221ST ST
The Prairies • \$512,500

Stunning 2053 sqft plan. 3,450 total sqft. Hardi plank siding, Pella windows, super insulation package & more.
AL BELT Custom

 **Brian Wilson**
402-850-0731



12501 LONGSHORE CIRCLE
North Shore • \$389,900

This stunning home offers 4 bedrooms, 4 bathrooms, and a 3 car garage. High quality finishes throughout.
AL BELT Custom

 **Brian Wilson**
402-850-0731



11024 SOUTH 175TH AVE
Tiburon Ridge • \$371,200

Must see to believe! 10' ceilings, stone fireplace, Birch cabinets, SS appliances, granite counters.
Best Construction

 **Charlotte Smith**
402-677-9279



10114 SOUTH 124TH ST
North Shore • \$409,950

Larger than average BRs, 4 BA, large laundry rm w/sink, 3 WI closets & gigantic pantry. 14x19 covered deck.
Griffin Homes

 **Mitch Griffin**
402-659-8568



2114 SOUTH 209TH ST
Windgate Ranch • \$665,000

You have seen this type of house on HGTV or houzz.com. Now come experience it live in Omaha.
Ideal Homes

 **Steve Larsen**
402-672-5450



4324 SOUTH 198TH ST
Whitehawk • \$374,250

The family room features a stone fireplace, floating shelves, and built in cabinetry. 4 BR / 4 BA / 3 GAR.
Nelson Builders

 **Marie Otis**
402-670-8775



19113 HAMPTON DRIVE
Aspen Creek • \$378,984

The Montgomery offers 3100sqft, 4 BR, 3 BA, 3 GAR. Kitchen features granite, SS appliances with gas.
Nelson Builders

 **Marie Otis**
402-670-8775



1611 SOUTH 207TH ST
Windgate Ranch • \$420,600

Luxurious 5 bed, 4 bath walkout. 10' and 11' ceilings. Beautiful kitchen with birch cabinets, hickory floors and SS.
Paradise Homes

 **Greg Haer**
402-677-8380



914 CREST DRIVE
Villas at Creekside • \$244,500

This terrific home sits on a great walk-out lot with a view! Great open floor plan with 10 foot ceilings.
Sudbeck Homes

 **Rick Kanne**
402-670-6644



121 BROKEN ARROW CIRCLE
Itan Parkview • \$238,500

Beautiful 1,411 sqft home. 3 BR, 2 BA, 3 GAR.
Sudbeck Homes

 **Rick Kanne**
402-670-6644



2440 SOUTH 217TH ST
Skyline Wood • \$380,000

Fantastic 3 BR, 3 BA home backs to green space with no backyard neighbors. Don't miss this one!
Sudbeck Homes

 **Jim Posey**
402-660-9700



10460 SOUTH 125TH AVE
North Shore • \$465,000

Be WOWED by the quality, finishes and all the bells and whistles this incredible, open and efficient ranch.
Widhalm Custom Homes

 **Michael Maley**
402-618-3259



9901 EMILINE
Cimarron Woods • \$372,470

Open floor plan with walls of windows, high decorative ceilings, wood floors in the great room, entry, KIT & dinette.
Woodland Homes

 **Traci Vacanti**
402-672-9071



19810 NINA ST
Copperfields • \$371,755

Open floor plan, with 2 FP, quartz countertops, large pantry, finished LL with rec room, fireplace & bar area.
Woodland Homes

 **Terry Stork**
402-657-2067



10354 SOUTH 124TH ST
North Shore • \$429,950

Contemporary style with 9' ceiling throughout main. KIT has quartz counters, lg walk thru pantry & more.
Woodland Homes

 **Jeff Elsberry**
402-690-0900

**THE BEST
NEW CONSTRUCTION
WEBSITE!**

buildwithcbshome.com

- Interactive Google Map Searches
- Detailed Lot Information
- Community Profiles
- Featured Builders & Developments
- Neighborhood Covenants
- Builder Agent Information



Bank with me. *Bank with the E!*

Personal service. Great rates. Quick decisions.

Let Equitable Bank help you finance your dream home. Equitable is a local, community bank. Decisions are made quickly and locally. Our bankers take pride in making the lending process work as smoothly and seamlessly as possible. Stop in or call and talk to a lender today.



Doug Nodgaard
Community Bank
President
MLO #472828



Joe Dobrovlny
Vice President
Mortgage Lending Officer
MLO #445889



Adam Lammers
Vice President
Commercial Lending Officer
MLO #876662



DJ Bradley
Commercial
Lending Officer
MLO #1390434



**We offer competitive loan terms!
Call our construction loan experts for details.**

Two Old Mill Building
10855 W. Dodge Rd.
402-827-8100

equitableonline.com



On the Cover

Your home is a canvas – a space to capture the beauty in every day. Whether you're renovating a tired kitchen or bath or creating your dream home, nobody helps homeowners bring their vision to life better than Ferguson Bath, Kitchen & Lighting Gallery. As you browse through each Parade home, you will see a sample of what our showroom has to offer. Our showroom displays are continually updated to offer the freshest and most innovative product selection in Omaha. One visit and you'll see why we have earned a strong reputation amongst local designers, builders, architects and remodelers. Ferguson has the trained professionals and the high quality products to make it easy to create your masterpiece. Walk-ins are welcome but for the individual attention your project deserves, appointments are recommended.



6780 South 118th Street, Omaha | 402.331.0662
FERGUSON.COM

Nathan Homes has been embracing rustic charm and warmth with modern amenities since 2006. A modern home is always open and full of light, making large windows a trademark element by bringing the outdoors in. Color schemes are kept simple and modern rustic spaces are open with preserved and exposed natural architectural elements. Nathan Homes provides design services with every home to provide you the service and attention needed to make the building process amazing. Bringing you a fusion of comfort and modern living, Nathan Homes' style is the definition of Laid Back Luxury!



402-570-5000
www.nathanhomesomaha.com



Cover Photo by



BuildOmaha.org

2016 Parade of HOMES

Parade of Homes Tour
April 15 - May 1, 2016

PAGE 6

Homes Listed by Subdivision

PAGE 7

Map of Homes

PAGE 9

Homes Listed by Price

PAGES 11-71

Parade of Homes Entries

PAGES 72

Build Omaha Members

Lets Build Omaha Together.

PRESENTING SPONSOR



METROPOLITAN
UTILITIES DISTRICT

CHOOSE 100% HARDIE™

*for authentic character and
uncompromising performance*

AND A 10-YEAR SERVICE COMMITMENT THAT COVERS 100% OF LABOR AND MATERIAL COSTS.

No deductible. No middlemen. No hassle.

We are so confident in our 100% HARDIE exterior, that if you encounter any siding or trim issues during the first 10 years, simply call James Hardie directly. We'll come to your home and correct the problem at no cost to you. It's another reason to insist on America's #1 brand of siding.

**Ask your builder for more details
or visit choosehardie.com**

**Contact your local
James Hardie Representative!**
Jason McDonald
(402) 830-8828
Jason.McDonald@jameshardie.com

*Coverage is for siding or trim issues related to cladding installation or manufacturing defects. All other terms, conditions and exclusions of James Hardie standard product warranties apply. James Hardie assumes no responsibility for any non-cladding related problems.

© 2016 James Hardie Building Products Inc. All Rights Reserved. TM, SM, and ® denote trademarks or registered trademarks of James Hardie Technology Limited. The  is a registered trademark of James Hardie Technology Limited. AD1609 03/16



JamesHardie

Siding | Trim

Thank You



METROPOLITAN

UTILITIES DISTRICT

for your continued support
of the building industry!



Welcome to the 2016 Parade of Homes Tour

PRESENTED BY



BuildOmaha
.org

PRESENTING SPONSOR



PUBLISHED BY

Build Omaha

P.O. Box 390232

Omaha, NE 68138

402-592-6942

www.buildomaha.org

**SALES & MARKETING/
PHOTOGRAPHY**

**Mary Jayne Throener
Build Omaha**

PUBLICATION DESIGN

**Allison Leeper
TMT Graphic Designs**

For more information or to
become a member, contact

402-505-5002

www.buildomaha.org

Build Omaha in association with the Metropolitan Utilities District are proud to present the 2016 Spring Parade of Homes. This year the Parade of Homes features 47 custom homes in 26 neighborhoods across the Omaha metro area. Home buyers can shop for their custom dream home from Bellevue to Yutan.

There has never been a better time to purchase your new home. Interest rates have remained at or near historic lows. Lending Institutions have relaxed their qualifying standards and made it easier to obtain financing. The Custom homes featured here incorporate state of the art, energy efficient technology reducing your utility costs and increase your family's comfort. In short, the 34 builders in the 2016 Spring Parade of Homes are confident you are getting the opportunity to purchase the finest custom homes ever offered in this market.

Build Omaha is a builder driven association whose mission is to provide a positive open environment for the new home construction industry in the Omaha metropolitan area. We strive to work with all facets of the building industry from city halls, to suppliers, to subcontractors, to real estate agents & consumers, to government organizations, etc. By bringing these facets together we form a unified group that continues to work at keeping the American dream of home ownership alive and affordable.

Now with this guide in your possession, you can determine where to start your own search. Use the map to search by location, the price listing to search by budget, or visit all of the homes for amazing floor plans and ideas to create your own custom home. The Builders and their representatives will be on hand to answer your questions. Admission is Free.

Welcome to the Build Omaha 2016 Spring Parade of Homes.

Sincerely,

The Build Omaha Board of Directors

Jerry Torczon

Steve Taft

Larry Nyffeler

Tim Hill

Todd Gaver

Eric Lakeman

*Thank you to our builders, sponsors & advertisers
for making this event a success!*



New for 2016... **3 Weekends**

April 15 - May 1, 2016

Saturday & Sunday: Noon - 6pm

Thursday & Friday: 5pm - 8pm

Deer Creek

- 1 Newport Homes LLC**
8075 N. 129th Avenue
- 2 S & S Custom Homes**
11787 Whitmore

Pine Creek

- 3 Legendary Homes LLC**
7021 N. 160th Street

Castle Creek

- 4 Pine Crest Homes**
5502 N. 154th Street

Itan Parkview

- 5 Sudbeck Homes**
121 Broken Arrow Circle

Indian Pointe

- 6 Trademark Homes**
18936 Sahler

Elkhorn Highland Ridge

- 7 Sudbeck Homes**
2727 N. 191st Street

Five Fountains

- 8 Castle Brook Builders**
1002 N. 192nd Street

Northridge

- 9 Fireside Homes**
18515 Mason Street

South Point Estates

- 10 Zych Construction**
1336 S. 210th Street

The Prairies

- 11 Absolute Customs**
1514 S. 218th Avenue
- 12 AI Belt Custom Homes**
1726 S. 221st Street

Ranch View 3

- 13 R & A Builders**
1909 S. 214th Street

Skyline Woods

- 14 Sudbeck Homes**
2440 S. 217th Street

Windgate Ranch

- 15 Castle Brook Builders**
1615 S 208th Street
- 16 Cambridge Homes**
20804 Woolworth
- 17 Ideal Designs Custom Homes, Inc.**
2114 S. 209th Street

- 18 Paradise Homes**
1611 S. 207th Street

- 19 Quest Custom Homes**
1717 S. 212th Street

- 20 Thomas David Fine Homes**
1413 S. 208th Street

Tuscan Ridge Villas

- 21 Royal Homes**
1312 S. HWS Cleveland Blvd

Copperfields

- 22 Woodland Homes**
19810 Nina Street

Whitehawk

- 23 Nelson Builders**
4324 S. 198th Street

Coventry Ridge

- 24 Sierra Homes**
6703 S. 209th Street

Remington Ridge

- 25 Dreamscape Homes**
8140 S. 193rd Avenue

Palisades

- 26 H3 Custom Homes**
9615 S. 173rd Street

Aspen Creek

- 27 Pine Crest Homes**
10640 S. 191st Avenue

- 28 MJ Design Build**
10636 S. 191st Avenue

- 29 Nelson Builders**
19113 Hampton Drive

- 30 Showcase Homes**
10630 S. 191st Street

- 31 Silverstone Building Co.**
10634 S. 188th Avenue

- 32 Trademark Homes**
10612 S. 189th Avenue

- 33 Woodland Homes**
10619 S. 190th Street

Tiburon Ridge

- 34 Best Construction**
11024 S. 175th Avenue

- 35 Nathan Homes**
10907 S. 175th Street

North Shore

- 36 AI Belt Custom Homes**
12501 IOnshore Circle

- 37 Carson Custom Homes**
10209 S. 124 Avenue

- 38 Griffin Homes**
10114 S. 124th Street

- 39 Timberline Homes**
10116 S. 124th Avenue

- 40 Widhalm Custom Homes**
10460 S. 125th Avenue

- 41 Woodland Homes**
10354 S. 124th Street

Ashbury Farm

- 42 Birchwood Homes**
11401 S. 120th Avenue

- 43 Birchwood Homes**
11451 S. 123rd Avenue

Cimarron Woods

- 44 Woodland Homes**
9901 Emiline

Granite Falls

- 45 Richland Homes**
10710 Laramie

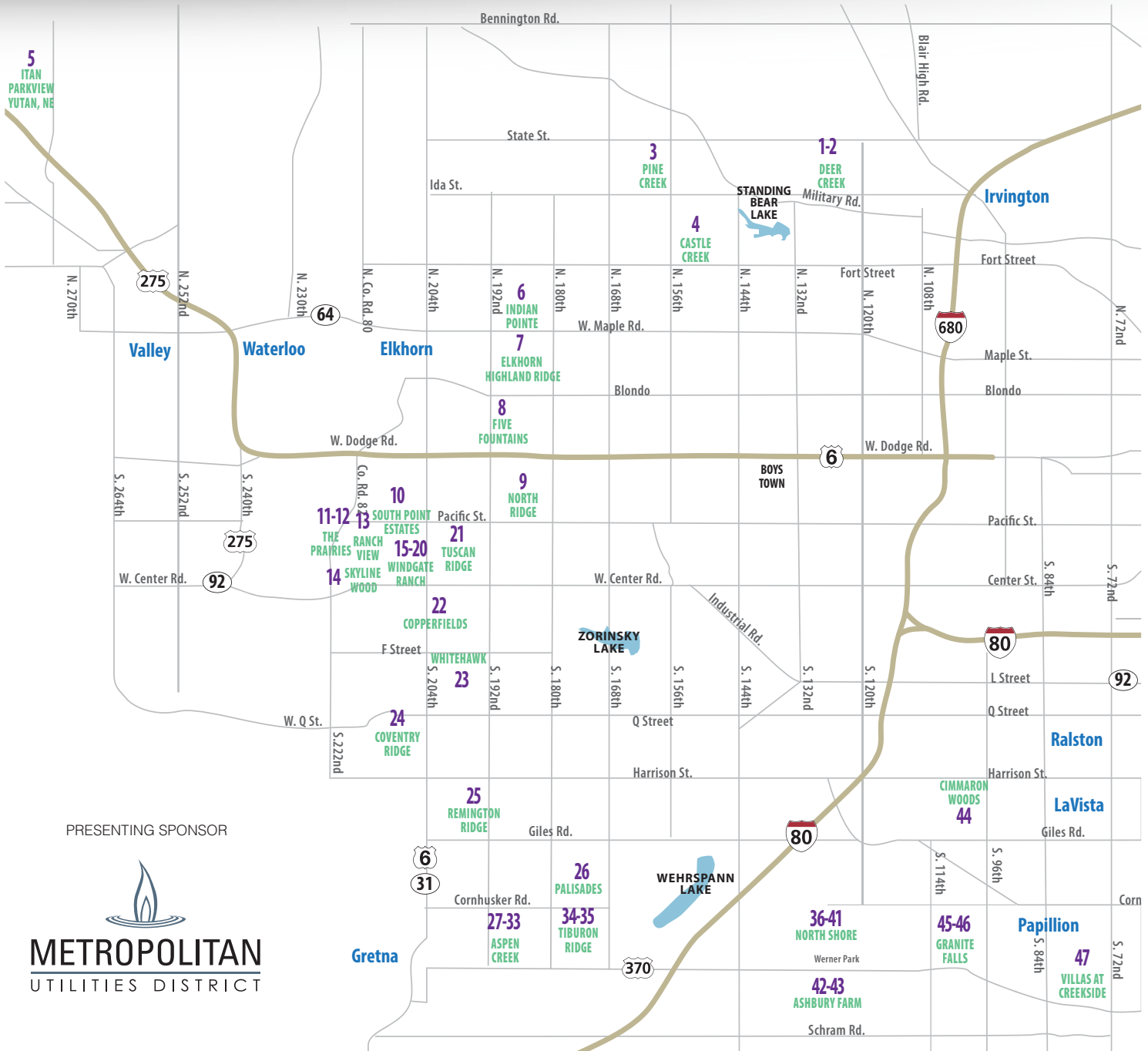
- 46 Richland Homes**
10714 Laramie

Villas at Creekside

- 47 Sudbeck Homes**
914 Crest Drive

TOUR 47 HOMES IN 26 SUBDIVISIONS

FREE to the Public. Watch for the Green Parade of Homes Signs!



PRESENTING SPONSOR



Lets Build Omaha Together.

Exterior Brick & Stone • Outdoor Living • Interiors



W
WATKINS

watkinsconcreteblock.com

144th & Giles | Omaha, NE

PARADE HOMES LISTED BY PRICE

\$200,000 - \$249,000

- 5 Sudbeck Homes**
121 Broken Arrow Circle Itan Parkview
- 47 Sudbeck Homes**
914 Crest Drive. Villas at Creekside

\$250,000 - \$299,000

- 46 Richland Homes**
10714 Laramie Granite Falls
- 25 Dreamscape Homes**
8140 S. 193rd Avenue Remington Ridge
- 28 MJ Design Build**
10636 S. 191st Avenue Aspen Creek
- 45 Richland Homes**
10710 Laramie Granite Falls
- 7 Sudbeck Homes**
2727 N. 191st Street. Elkhorn Highland Ridge
- 1 Newport Homes LLC**
8075 N. 129th Avenue Deer Creek
- 20 Thomas David Fine Homes**
1413 S. 208th Street. Windgate Ranch

\$300,000 - \$349,000

- 14 Sudbeck Homes**
2440 S. 217th Street. Skyline Woods
- 4 Pine Crest Homes**
5502 N. 154th Street Castle Creek
- 32 Trademark Homes**
10612 S. 189th Avenue Aspen Creek
- 37 Carson Custom Homes**
10209 S. 124 Avenue North Shore
- 34 Best Construction**
11024 S. 175th Avenue Tiburon Ridge
- 27 Pine Crest Homes**
10640 S. 191st. Avenue Aspen Creek

\$350,000 - \$399,000

- 6 Trademark Homes**
18936 Sahler Indian Pointe
 - 26 H3 Custom Homes**
9615 S. 173rd Street Palisades
 - 15 Castle Brook Builders**
1615 S 208th Street Windgate Ranch
 - 36 AI Belt Custom Homes**
12501 Longshore Circle. North Shore
 - 22 Woodland Homes**
19810 Nina Street Copperfields
 - 3 Legendary Homes LLC**
7021 N. 160th Street Pine Creek
 - 44 Woodland Homes**
9901 Emiline Cimarron Woods
 - 23 Nelson Builders**
4324 S. 198th Street. Whitehawk
 - 16 Cambridge Homes**
20804 Woolworth. Windgate Ranch
 - 29 Nelson Builders**
19113 Hampton Drive Aspen Creek
 - 24 Sierra Homes**
6703 S. 209th Street. Coventry Ridge
 - 30 Showcase Homes**
10630 S. 191st Street. Aspen Creek
 - 9 Fireside Homes**
18515 Mason Street Northridge
- ## \$400,000 - \$449,000
- 38 Griffin Homes**
10114 S. 124th Street. North Shore
 - 33 Woodland Homes**
10619 S. 190th Street. Aspen Creek
 - 18 Paradise Homes**
1611 S. 207th Street. Windgate Ranch
 - 31 Silverstone Building Company**
10634 S. 188th Avenue Aspen Creek
 - 39 Timberline Homes**
10116 S. 124th Avenue North Shore
 - 41 Woodland Homes**
10354 S. 124th Street North Shore
 - 8 Castle Brook Builders**
1002 N. 190th Street Five Fountians

\$450,000 - \$499,000

- 21 Royal Homes**
1312 S. HWS Cleveland Blvd Tuscan Ridge Villas
- 40 Widhalm Custom Homes**
10460 S. 125th Avenue North Shore
- 10 Zych Construction**
1336 S. 210th Street. South Point Estates

\$500,000 - \$549,000

- 12 AI Belt Custom Homes**
1726 S. 221st Street The Prairies

\$550,000 - \$599,000

- 2 S & S Custom Homes**
11787 Whitmore. Deer Creek
- 35 Nathan Homes**
10907 S. 175th Street. Tiburon Ridge

\$600,000 - \$699,000

- 43 Birchwood Homes**
11451 S. 123rd Avenue Ashbury Farm
- 17 Ideal Designs Custom Homes, Inc.**
2114 S. 209th Street. Windgate Ranch
- 13 R & A Builders**
1909 S. 214th Street. Ranch View 3

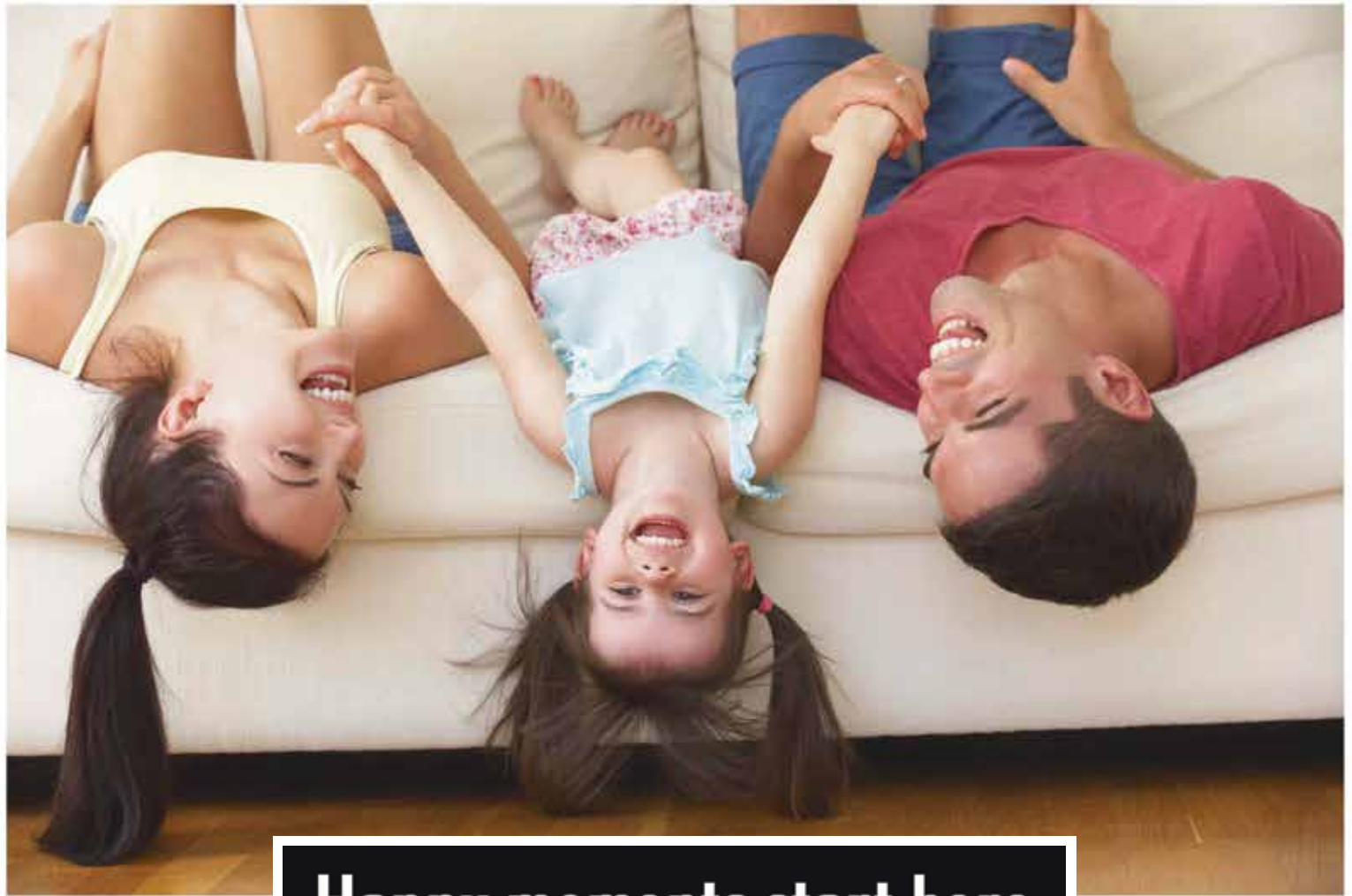
\$800,000 +

- 42 Birchwood Homes**
11401 S. 120th Avenue Ashbury Farm
- 19 Quest Custom Homes**
1717 S. 212th Street. Windgate Ranch
- 11 Absolute Customs**
1514 S. 218th Avenue The Prairies



PRESENTING SPONSOR





Happy moments start here

Construction Loans

Build your home using our seamless construction lending and draw process.

Mortgage Loans

Finance your mortgage in the same place as your construction loan = no hassle.

 Member FDIC



EXPECT MORE

Construction Lender



Michael Bittner

NMLS: 408474

Direct: 402.715.4693

Cell: 402.616.6391

mbittner@PremierBankNE.com

Mortgage Lender



Andy Herold

NMLS: 400327

Direct: 402.715.4680

Cell: 402.689.3793

aherold@PremierBankNE.com

THE VIEW AT DEER CREEK

8075 N. 129th Avenue | Omaha

01



CARLTON

Call listing agent Bridget Olsen for details on all models and lots available. 402-218-6021. Newport Homes LLC currently owns lots in Spring Creek, Titan Springs, Clearwater Falls, The View at Deer Creek. Features of Newport Homes LLC Ranch style home w/ 3 bedrooms, 2 baths on main floor. Hidden pantry, covered deck, wood floors, granite/quartz counters, 4 car garage included in current price.



www.newporthomesomaha.com



SALES BY:

Bridge Olsen
402-218-6021

Century 21
Century Real Estate

PRICE OF ENTRY:

\$273,529

(Lot Included)

FINISHED SQ. FT.:

1,722

02

DEER CREEK

11787 Whitmore | Omaha

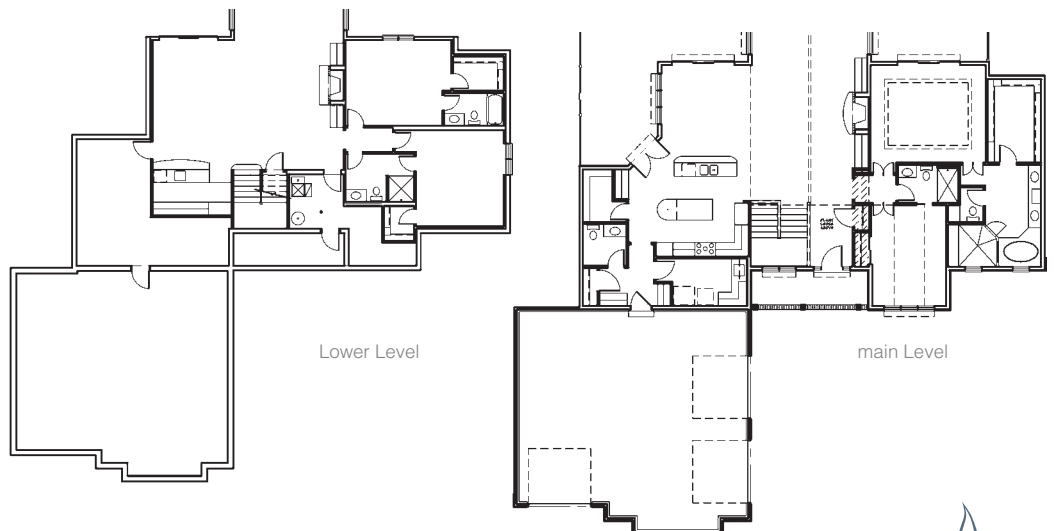


Welcome to our brand NEW Ranch plan. Main floor features 2145 FSF, master bedroom/den, 3 bath locations, 17' cathedral vault through entry and great room, 14' high stone front fireplace, floating bookcase shelves with indirect lighting, extensive use of windows with transoms, pendant lighting. Kitchen has center prep island, main island with stainless farm sink and breakfast bar. Granite countertops, stainless appliances, beverage cooler, walk-in pantry, 350sf covered deck, master bedroom with 9' slider to a covered deck, custom walk-in full height tile shower, free standing soaker tub and stone accent wall. 950sf. 3+ car garage fully excavated with over 900sf, Basement has 1900+sf, 2 bedrooms, private bath, shared semi private bath, wet bar, recroom, and game area. Full walkout basement.

SALES BY:
S&S Custom Homes
Steve Criss
402-681-5112

PRICE OF ENTRY:
\$500,000-\$550,000
(Lot Included)

FINISHED SQ. FT.:
4,402



PRESENTING SPONSOR



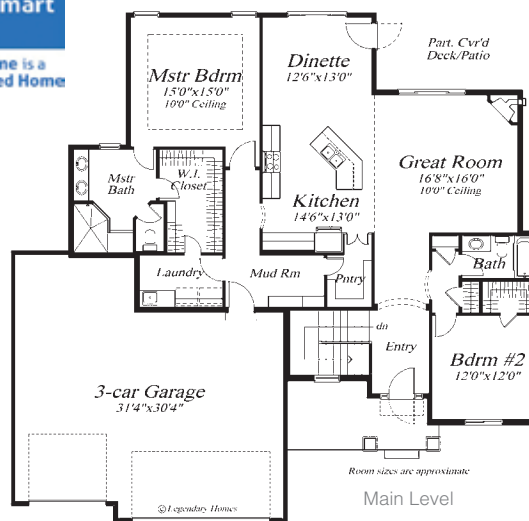
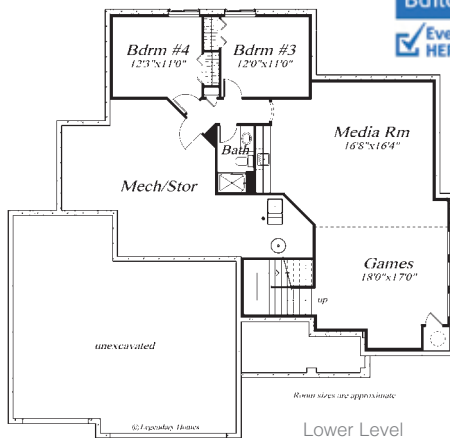


THE BELLA

Come experience this beautiful open concept Ranch. 4 bedrooms, 3 bathrooms with over 3,000 sq. ft., positioned on a wonderful daylight lot that backs to trees. This home features Birch cabinets and quartz countertops throughout. The kitchen features a large walk in pantry and double oven with Slate appliances. The main level boasts 2x6 exterior walls, 10' ceilings and 3/4" Hickory wood flooring. Enjoy looking at mature trees from your living room. The master bedroom/bathroom has a large walk-in tile shower, double vanities and a spacious walk in closet that has an entrance to the laundry area.

Legendary Homes, LLC
"Quality you can build on"

www.legendaryhomesomaha.com



SALES BY:

Annie Evans
402-677-1439

Dianne Evans
402-681-2011

NP Dodge Real Estate

PRICE OF ENTRY:

\$376,000

(Lot Included)

FINISHED SQ. FT.:

3,039



PRESENTING SPONSOR

“

It should be easy to keep
my home looking great.”



Transform your home with the warmth and beauty of Pella® Designer Series® wood windows and patio doors. They give you less to worry about and more ways to decorate your home. Pella's between-the-glass blinds and shades stay protected from dust and damage, so they don't need constant cleaning. And our exclusive snap-in technology makes them easy for you to change whenever you want a new look. More choices mean more style and convenience in your home.

PELLA WINDOW & DOOR SHOWROOM

OMAHA, NE
9845 SOUTH 142ND STREET
402.331.9225

PellaOmaha.com

© 2016 Pella Corporation



THE MEADOW

This 4 bed, 3 bath is custom built by Pine Crest Homes! Top-notch quality includes quartz counters, engineered hardwood floors, huge walk-in pantry, 2nd floor laundry + spa-like master bathroom. Relax in the 2nd floor media room or on the covered deck! Pine Crest always delivers the best with over 30 years of building experience!



www.pinecresthomesomaha.com



SALES BY:

NP Dodge Real Estate

**Justin Pogge
402-639-5473**

PRICE OF ENTRY:

\$308,850
(Lot Included)

FINISHED SQ. FT.:

2,442

05

ITAN PARKVIEW

121 Broken Arrow Circle | Yutan



www.sudbeckhomes.com

SALES BY:

Rick Kanne
402-670-6644

CBSHome Real Estate

PRICE OF ENTRY:

\$238,500

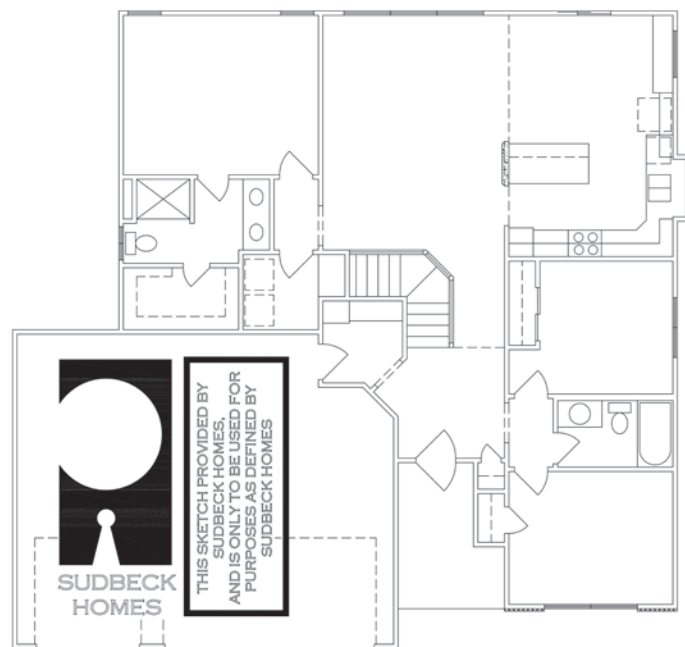
(Lot Included)

FINISHED SQ. FT.:

1,411

1411 RANCH

One of our best selling plans, this split three-bedroom two-bath ranch boasts a roomy 3-car garage and unsurpassed gathering spaces. The living areas exquisitely display 10-foot ceilings coupled with a huge kitchen housing both a walk-around island and a sensational butler's pantry providing additional counter and work spaces. The oversized drop zone flows into the spacious front entry designed to welcome numerous guests. This open floor plan provides limitless choices in design concepts. Come look. It's eager to become your home.



PRESENTING SPONSOR





LAMP RYNEARSON
LRA-Inc.com

Leaving a legacy to our communities through our work with builders, developers and home buyers.

LAMP RYNEARSON COMPANIES







Taylor Made
*Home Solutions*SM

MOULDING • STAIR PARTS • DOORS • BUILDING MATERIALS
RESIDENTIAL / MULTI-FAMILY / COMMERCIAL





For over 38 years Taylor Made Home Solutions (formerly Plywood Inc.) has specialized in high quality mouldings, doors, locks, and stair parts.

**New Construction
Remodeling • Restoration**

"Focused on finishing your dream home!"

7700 Serum Ave. | Ralston, NE 68127 | 402-331-4708
www.taylormadehomesolutions.com



NP Dodge
REAL ESTATE

SINCE 1855

NP DODGE IS PROUD OF THEIR LOCAL BUILDERS.

Legendary Homes

3 7021 N 160th Street, Bennington
Subdivision: Pine Creek
Dianne Evans 402-681-2011
Annie Evans 402-677-1439

Pine Crest Homes

4 5502 N 154th Street, Omaha
Subdivision: Castle Creek
Justin Pogge 402-639-5473

Trademark Homes

6 18936 Sahler, Omaha
Subdivision: Indian Pointe
Betsy & Jason Peter 402-672-1981

Royal Homes

21 1312 S HWS Cleveland Blvd.,
Omaha
Subdivision: Tuscan Ridge Villas
John Greguska 402-612-0594

Dreamscape Homes

25 8140 S 193rd Avenue, Gretna
Subdivision: Remington Ridge
Bob Quartoroli 402-680-0886

H3 Custom Homes

26 9615 S 173rd Street, Omaha
Subdivision: Palisades
Kristen Wehner Jacobsen
402-672-7701

MJ Design Build

28 10636 S 191st Ave., Gretna
Subdivision: Aspen Creek
Duane Safarik 402-669-6444

Birchwood Homes

42 11401 S 120th Ave., Papillion
43 11451 S 123rd Ave., Papillion
Subdivision: Ashbury Farm
Susan Hancock 402-215-7700

What it means
to be *local.* 

06

INDIAN POINTE

18936 Sahler Street | Omaha



TUSCAN 2549 PLAN

Trademark Homes, Inc. is a custom builder that prides themselves in customer satisfaction and their attention to detail shows in every single home they build. Our new floor plan is an open plan that is warm and inviting. The two-story entry is loaded with windows and a circle staircase. Its spacious eat in kitchen includes a hidden walk-in pantry with a window, custom birch cabinets, granite counter tops, and decorative tile backsplash. The living room has a tiled fireplace. On the main level you will also find an office with French doors, drop zone area and a bench with hooks. The second level includes a master suite, loft space perfect for kids, 3 bedrooms and a second floor laundry. Come check out the detail and finishes you will not be disappointed!!

SALES BY:

Jason Peter
402-672-1996

Betsy Peter
402-672-1981

NP Dodge Real Estate

PRICE OF ENTRY:

See Builder for Details

(Lot Included)

FINISHED SQ. FT.:

2,549



PRESENTING SPONSOR



ELKHORN HIGHLAND RIDGE

2727 N. 191st Street | Elkhorn

07



1579 RANCH

Your search for the perfect ranch style home is over! You will find it all in this stunning, quality-built home by SUDBECK HOMES. This stylish walkout ranch will 'wow' you with its beautiful granite countertops, unique light fixtures, and natural hickory wood floors. Spend a cozy evening in the open living space as you flick on the linear fireplace. Your days will always be bright from the natural stream of light entering thru the huge bank of windows lining the entire rear of this home. And be prepared for yet another surprise...a 4th car garage under with its own driveway!



SALES BY:

Don Fuller
402-677-8070

Berkshire Hathaway
HomeServices Ambassador
Real Estate

PRICE OF ENTRY:

\$296,200
(Lot Included)

FINISHED SQ. FT.:

1,579

WELLS
FARGO

HOME
MORTGAGE

Private Mortgage Banking

Enjoy peace of mind when
building your new home



Our exclusive **Builder Best®** Extended Rate Lock program was designed with new construction buyers in mind. It provides protection from interest rate fluctuations while your new home is being built.

Watching your new home take shape can be a rewarding experience. At the same time, in the time it takes to build a home, interest rates can bounce up and down. This market fluctuation can complicate your decisions during the construction process. Knowing that your interest rate is secured means you can confidently proceed.

Contact your Private Mortgage Banker for more details.



Paul David Camenzind
402-861-7888

www.paulcamenzind.com
paul.d.camenzind@wellsfargo.com
NMLSR ID 400310



Shelley Thompson
402-431-5589

shelley.thompson@wellsfargo.com
NMLSR ID 983793



Lisa L. Hedrick
402-498-5063

lisa.l.hedrick@wellsfargo.com
NMLSR ID 1057298



Kevin W. Mowery
402-498-5033

kevin.w.mowery@wellsfargo.com
www.wfhm.com/kevin-mowery
NMLSR ID 968400



Austin Toney
402-384-5684

austin.toney@wellsfargo.com
www.wfhm.com/austin-toney
NMLSR ID 606161



Brandon Weatherford
402-331-6084

brandon.t.weatherford@wellsfargo.com
www.wfhm.com/brandon-weatherford
NMLSR ID 923209

Information is accurate as of date of printing and is subject to change without notice. Wells Fargo Home Mortgage is a division of Wells Fargo Bank, N.A. © 2014 Wells Fargo Bank, N.A. All rights reserved. NMLSR ID 399801. AS1853679 Expires 5/2016





WINDSOR COLLECTION

The new 2016 Windsor Collection has an open floor plan perfect for any family. Two-story home with granite throughout. Oversized mudroom with built-in locker system, large kitchen island with double oven, walk-in pantry and a sunken office off the kitchen. Circle stair leads to four bedrooms including the master suite with a spa-like master bathroom and walk-in custom closet. Large bar and theater room for entertainment in the basement. Modern finishes throughout.



www.cbbomaha.com



SALES BY:

Shelli Klemke
402-650-2609

Berkshire Hathaway
Home Services
Ambassador Real Estate

BASE PRICE OF ENTRY:

\$447,228

(Lot Included)

FINISHED SQ. FT.:

4,247



PRESENTING SPONSOR

09

NORTHRIDGE

18515 Mason Street | Elkhorn



www.firesideomaha.com

ASHBURY

The Fireside Homes Ashbury Model in Northridge is a wonderful 2-story plan with 4 bedrooms, 4 bathrooms, office/dining on the main level, Pella windows, stainless steel appliances, custom cabinets, 3/4-inch wood floors, and much more.

Fireside is currently building in Northridge, Indian Point, North Shore, Copperfields, The Prairies, Grand View and many other areas. Please call Bryce Penke or Grant Stine for an appointment.

SALES BY:

Bryce Penke
402-578-9006

Grant Stine
402-850-7171

Berkshire Hathaway
HomeServices
Ambassador Real Estate

PRICE OF ENTRY:

\$399,000

(Lot Included)

FINISHED SQ. FT.:

2,552



PRESENTING SPONSOR





Model Home now for sale!

THE ABIGAIL

- 4 bed executive walkout ranch with finished lower level & bar
- Luxury kit with built in stainless steel appliances and walk-in pantry
- Solid paneled interior doors
- Engineered wood floors
- Fireplace in fin LL Bar, and FP
- Full height tile linear fireplace
- Quartz & granite counter tops in kitchen & baths
- Whole house audio & ipod station
- Certified High Performance Home
- 5 year extended warranty

This home is 53% MORE efficient than other homes built to code. Ask us for more details!



www.zychconstruction.com



SALES BY:

Tracy Zych
402-718-5800

Berkshire Hathaway
HomeServices
Ambassador Real Estate

PRICE OF ENTRY:

\$475,000

(Lot Included)

FINISHED SQ. FT.:

3,457



WINDOW INNOVATIONS

Solutions for Windows, Doors and More!

MARVIN 
Windows and Doors

Built around you.®

 **Integrity.**

from **MARVIN**
Windows and Doors

Built to perform.™

New Construction • Remodeling
Replacement • Financing



402-905-9100
WWW.WINDOWINNOVATIONS.COM

CONTACT US TODAY! 11941 Centennial Rd.


FROM GROUND BREAK
to **PERMANENT FINANCING**
to **CLOSING TABLE**

Call us today TO EXPERIENCE WHY
AREA HOME BUYERS, BUILDERS *and* REALTORS
trust us WITH REAL ESTATE TRANSACTIONS

402 333 9100

COREBANK.COM/REALESTATE

C O R E B A N K

MEMBER FDIC  EQUAL HOUSING LENDER



THE ZION

The Zion is reminiscent of an Old World Mediterranean estate as though it were situated on the hills of Tuscany. Master craftsman labored over the earthen stucco finish, molding, iron doors and so many details! This home will whisk you away when you experience treasured artistry and intriguing details. The 7,002 FSF home offers 6 bedrooms, 5 bathrooms, vaulted ceilings in master bedroom and bathroom with an exquisite built in jacuzzi / walk-in shower area, large theater room with built-in bar area off of the downstairs living room, exercise room off of the garage, basement wine cellar, large butler's pantry off of kitchen, bonus kids loft playroom and so much more.

Absolute Customs provides beautifully designed home plans, each of which can be customized in any way to incorporate any and all features that you request. Only the finest materials are used. Imagine your home a showplace with unique ceiling treatments, impressive moldings, kitchens with custom cabinetry and granite countertops, hardwood floors, volume ceilings, walls of windows and much more!

- 100% Customizable Floor Plans
- Fixed Fee Plus True Cost Method
- Interior Design & Selection Coordination



www.absolutecustomsinc.com

SALES BY:

**Absolute Custom
Homes
402-880-9494**

PRICE OF ENTRY:

**\$1,200,000
(Lot Included)**

FINISHED SQ. FT.:

7,002

12

THE PRAIRIES

1726 S. 221st Street | Elkhorn



www.AIBeltCustomHomes.com

2053 PLAN

Welcome to Al Belt Custom Homes newest ranch plan, the 2053, this stunning home offers 4 bed, 3 bath and a 4 car garage. Standard features include Hardi plank siding, Pella aluminum clad windows, super insulation practices and is a Certified High Performance Home. Custom built birch cabinets, granite throughout, engineered hickory floors, oversized craftsman style painted trim, stone fireplace to ceiling, open floor plan, covered composite deck, aluminum railing, and a paver patio with fire pit. Over 3,400 FSF of high quality finishes including the inviting master suite with double vanities, whirlpool tub, walk-in shower. Finished lower level with 2 bedrooms, a spacious jack and jill bath, large rec room with stone fireplace & custom birch and granite wet bar.

SALES BY:

Brian Wilson
402-850-0731

CBSHome Real Estate

PRICE OF ENTRY:

\$512,500

(Lot Included)

FINISHED SQ. FT.:

3,452

Al Belt Custom Homes is a custom home builder. Let us help design and build your dream home. Al builds throughout the metro on your lot or ours.

www.AIBeltCustomHomes.com



PRESENTING SPONSOR



RANCH VIEW III

1909 S. 214th Street | Elkhorn

13



ANDRES MODEL

R&A Builders newest "Must See" model! Spacious open concept Ranch with unbelievable Finishes & Craftsmanship! One of a kind ceiling details! Set on over 1/2 acre lot, it features a gorgeous Stone & Stucco elevation with an oversize courtyard style 3 car garage. Showplace Kitchen with Cambria Quartz Island, upscale appliances and walk-in pantry. Luxurious Master Suite. Fully finished walk-out basement designed for today's entertaining with features like huge wet bar, poker room, wine cellar & much, much more. Energy efficient HVAC and insulation. Model pricing starts around \$675,000 (Lot not included). We can help you build your Dream Home. Lots available in The Prairies & across the Metro area. Call John Miles for details at 402-598-0598.



randabuildersomaha.com

SALES BY:

John Miles
402-598-0598

Berkshire Hathaway
HomesServices
Ambassador Real Estate



PRICE OF ENTRY:

Starting at
\$675,000
(Lot Not Included)

FINISHED SQ. FT.:

4,800

One Stop Shopping for Complete Floor Covering



To see more photos of our work, visit
www.imperialtileinc.com



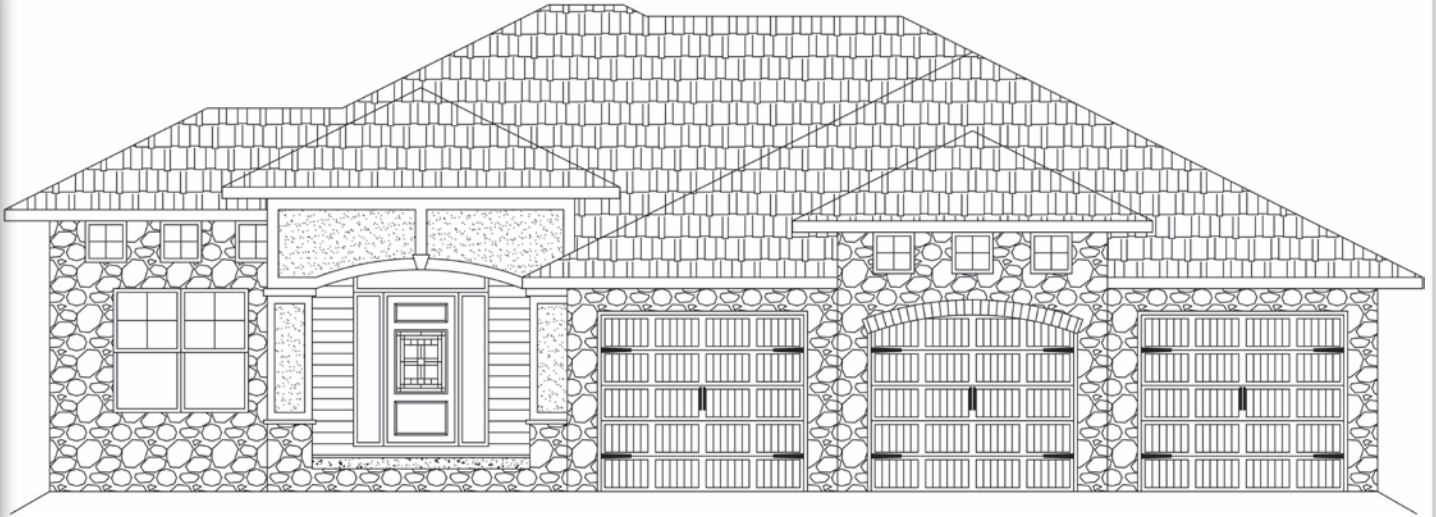
Carpet
Tile
Marble & Stone
Counter Tops
Vinyl Flooring
Shower Doors
Mirrors
Bath Accessories

Imperial *Tile*
CO. INC.

Since 1963
"New Home Specialist"

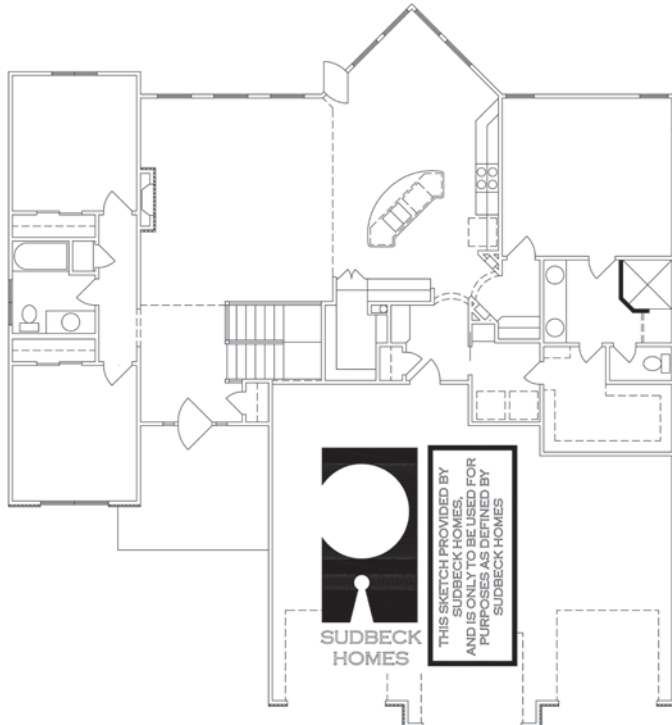
Remodels Always Welcome • Free Estimates





1868 RANCH

Here is yet another fine example of the quality and attention to detail integrated into every home built by SUDBECK HOMES. This split-bedroom designed ranch boasts a large covered patio which opens up to a huge green space with trails. The spacious floor plan allows for tremendous gathering spaces featuring 10-foot ceilings and open living areas. With solid surfaces, recessed lighting, and hardwood floors throughout, it's bound to make an impression with all of your guests. You're invited to stop by to see this wonderful new plan.



www.sudbeckhomes.com

SALES BY:

Jim Posey
402-660-9700

CBSHome Real Estate

PRICE OF ENTRY:

\$380,000

(Lot Included)

FINISHED SQ. FT.:

1,868



Builders Supply Company is devoted entirely to helping you bring your building, remodeling or project ideas to life.

Builders Supply's Home Design Center is one of the most comprehensive and innovative home showcases in the United States. Walking into the Home Design Center is like having a contemporary living magazine come to life right in front of you. There are hundreds of options for cabinets, doors and windows, fireplaces, decks, and so much more. Our beautiful "real life" displays enable you to get a first hand look at the products you're considering. Whether building a new home or updating an existing one, our professional design staff is ready to assist you.



We've provided you with excellent service and stood by our products since 1951. You can expect nothing less every day we're on the job with you.

- Lumber
- Wall Panels
- Trusses
- Roofing
- Windows
- Doors
- Mouldings
- Hardware
- Siding
- Insulation
- Composite Decking
- Pneumatic Nails



BUILDERS INC.
SUPPLY CO.
— WHERE QUALITY COSTS LESS

We build on our reputation everyday...

5701 S. 72nd Street
Omaha, NE 68127
402.331.4500

builderssupplyco.com

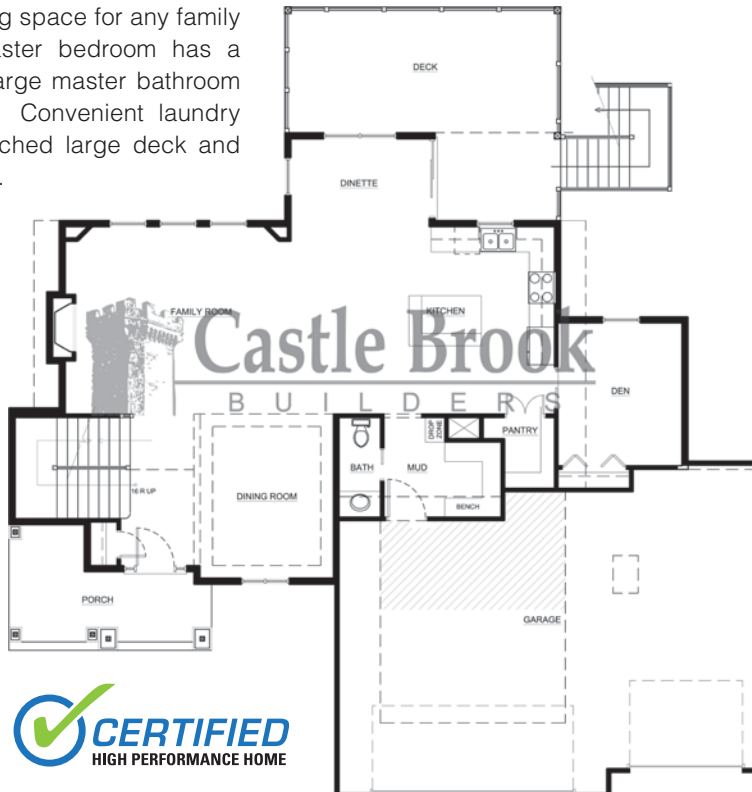


BERKELEY COLLECTION

The new 2016 Berkeley Collection is a four bedroom, four bathroom spacious two story home. Kitchen to include birch cabinets and quartz counter tops. Main level boasts an open floor plan with a fireplace and formal dining room. Upstairs has comfortable living space for any family and/or guests. Master bedroom has a sitting room and a large master bathroom with walk-in closet. Convenient laundry room upstairs. Attached large deck and patio for entertaining.



www.cbbomaha.com



SALES BY:

Shelli Klemke
402-650-2609

Berkshire Hathaway
Home Services
Ambassador Real Estate

BASE PRICE OF ENTRY:

\$366,502
(Lot Included)

FINISHED SQ. FT.:

3,412



PRESENTING SPONSOR

16

WINDGATE RANCH

20804 Wooldworth Avenue | Elkhorn



www.cambridgehomesomaha.com

THE CEDAR

Cambridge Homes, where **'Upgrades Come Standard'**. Functionality and entertainment is the basis for the open concept Cedar model. Base price for all Cambridge Homes includes: \$50k lot allowance, hardwood floors in entry, kitchen, dinette, and hallway, raised kitchen cabinets with crown molding, granite countertops, walk-in pantry, tile kitchen backsplash, stainless-steel appliances, master suite with dual sinks in bath, walk-in tiled master shower, and walk-in closet, drop zone area, covered deck/patio, garage door openers, sprinkler system, and many more. Come visit our new model at 20804 Woolworth Ave., to see for yourself!

SALES BY:

Cambridge Homes
402-933-3883

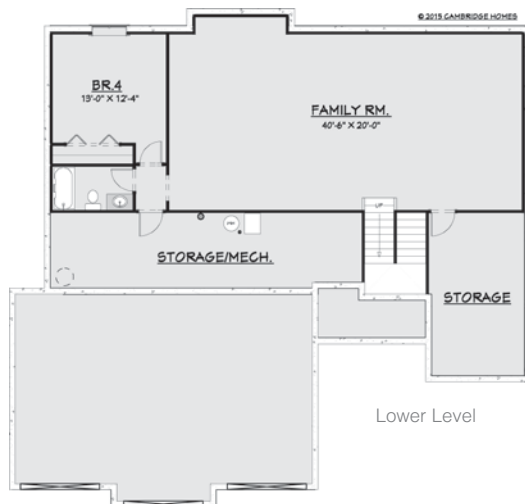
PRICE OF ENTRY:

\$375,000

(Lot Included)

FINISHED SQ. FT.:

2,997



Lower Level



Main Level

PRESENTING SPONSOR





THE WILLIAMSBURG

Ideal Designs Custom Homes, Inc. is a custom builder that prides themselves in customer satisfaction, service and their attention to detail shows in every single home they build. Our new floor plan is an open plan that is warm and inviting. The entry features a large 2 story entry with open stair case, flex room/ office, two story catwalk, large kitchen, walk-in pantry, 4 bedrooms, loft area, jack and Jill bathroom, large master suite, large master bathroom, free standing tub with fireplace and walk-in shower. This 1.5 story is one of a kind, stop by and you will not be disappointed!!



www.idealdesignsomaha.com

SALES BY:

Steve Larsen
402-672-5450

CBSHome Real Estate

PRICE OF ENTRY:

\$665,000

(Lot Included)

FINISHED SQ. FT.:

3,376



LET'S MAKE HOME HAPPEN.

Build, buy, refinance, or remodel with help from UBT's experts.

The best part about owning a home is making memories in it with family and friends. Our experienced team will help you get there with financing that fits your plans and budget, backed by responsive service from a locally-owned bank.

Now is a great time to get started. We're here to help.

GET THE HOME YOU LOVE
— AND SAVE —
\$300
OFF CLOSING COSTS



CONSTRUCTION



Malinie Staben
402.827.6944
NMLS ID #536957



RESIDENTIAL



Debbie Lentz
402.827.6930
NMLS #536955



Steve Lentz
402.827.6920
NMLS #536954

- Free Pre-Qualification
- Local Decision Making
- Competitive Rates
- Local Servicing Option

Omaha | 177th & West Center

UBT Union Bank & Trust

MORTGAGE LOANS



Member FDIC

ubt.com/omahahomes | 402.827.6969

Offer subject to credit approval. Valid on first lien closed-end owner-occupied dwelling-secured home purchase and home refinance loans with terms of 10 years or greater. Other restrictions & fees may apply. Cannot be combined with any other offer. Not valid on loans in process. Expires 4/30/2016.

WINDGATE RANCH

1611 S. 207th Street | Elkhorn

18

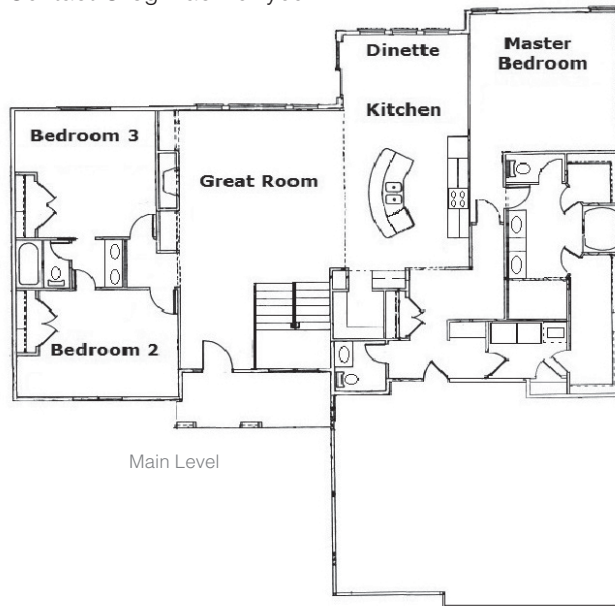


PRESTON

Paradise Homes beautiful new 3 bedroom, 3 bath ranch with over 2000 s.f. on the main floor. This home offers everything you are looking for with 10 ft. ceilings, birch cabinets, hickory wood floors, and stainless steel appliances. Two large walk in closets in the master suite connecting to the laundry room. Covered deck is great for entertaining. Fully finished basement with 2 additional bedrooms, rec room, full bath, wet bar, and fireplace. Model as shown \$420,600. Base price starts at \$269,500. Contact Greg Haer for your new home (402) 677-8380.



www.paradisehomesomaha.com



SALES BY:

Greg Haer
402-677-8380
CBSHome Real Estate

PRICE OF ENTRY:

\$420,600
(Lot Included)

FINISHED SQ. FT.:

3,357

Now you're cooking.



Comfort in your home.

When you choose natural gas appliances for your home you are making a responsible energy choice. Natural gas is efficient, reliable, comfortable and clean. Homes with all natural gas appliances can save up to \$1,124 annually!

For rebate information, contact our Marketing Department | 402.504.7981



Clean, affordable natural gas.

Homes with natural gas appliances reduce carbon dioxide emissions up to 75 percent compared to all-electric homes. With lower energy bills and convenient amenities, natural gas is the right choice for the planet and your family.



METROPOLITAN
UTILITIES DISTRICT

Proud sponsor of the 2016 Parade of Homes

mudomaha.com



19

WINDGATE RANCH ESTATES

1717 S. 212th Street | Elkhorn



www.questhomesomaha.com

This stunning luxury 1.5 Story features:

- Heavily Treed Lot
- Rustic Colorado Style
- Open Floor Plan
- 4 Bedrooms & 5 Baths
- 4 Stall Garage
- Rustic Wood Floor
- Custom Cabinets
- Luxury Appliances
- Covered Deck with Surround Stone Fireplace, Granite Countertops & Remote Screen
- Luxurious Master Bath Suite & Heated Floor
- Oversized Granite Kitchen Island
- Cedar Corbels & Rustic Beam Accent Exterior
- Kohler Plumbing Fixtures
- Circle Driveway

SALES BY:

Tom Meginnis
Quest Construction
402-677-4913

PRICE OF ENTRY:

\$775,000

(Lot Not Included)

FINISHED SQ. FT.:

4,100



Pursue your "Quest"
for your *Dream Home* with
Quest Custom Homes

PRESENTING SPONSOR



WINDGATE RANCH

1413 S. 208th Street | Elkhorn

20



TAHOE

Visit this beautiful ranch home with 3 bedrooms on the main floor with a 3 + car garage in a very efficient layout. Appreciate the finish and quality throughout the home that makes it timeless and minimal maintenance home you will enjoy.



THOMAS DAVID

fine homes

www.tdbuilders.com

SALES BY:

Mike Thorell
402-319-2310

Berkshire Hathaway
HomeServices
Ambassador Real Estate

BASE PRICE OF ENTRY:

\$299,786

(Lot Not Included)

FINISHED SQ. FT.:

1,947



Quality Glass & Mirror See the area's **LARGEST** selection of **GLASS & MIRROR Products**
 • Glass • Mirrors • Shower Enclosures

ALL AT COMPETITIVE PRICES

• COMMERCIAL • RESIDENTIAL
 • RETAIL • REMODELING
 • NEW HOMES • APARTMENTS
 • MANUFACTURER • WHOLESALE

Home Glass & Mirror
Best of Omaha
 2015 Winner
 2017 - 2018 Winner

BBB ACCREDITED BUSINESS



Find us on **facebook.**

402-339-3737 Visit our Showroom
 14242 C Circle **FOR ALL YOUR GLASS NEEDS**
 Omaha, NE 68144 Monday thru Friday 8am - 5pm

LOOK FOR

Fall Parade of **HOMES**

Coming September 2016

BuildOmaha
Holiday HOME TOUR

Coming November 2016

ProHome manages the home warranty for these dedicated builders:

- ✓ Advantage Development
- ✓ Barr Homes
- ✓ Belt Custom Homes
- ✓ Best Construction
- ✓ Hildy Construction
- ✓ Ken Oster Homes
- ✓ Prairie Homes
- ✓ Proline Homes
- ✓ Zych Construction



ProHome of Nebraska

BUILDERS THAT CARE ABOUT THEIR HOMEOWNERS USE PROHOME

PROHOME The national standard in new home warranty management
 ® National franchise, locally owned and operated for 19 years

✓ **CONTACT US**
 (402) 965.8700

TUSCAN RIDGE VILLAS

1312 S. HWS Cleveland Boulevard | Elkhorn

21



GENOA VILLA

The Royal Collection of Homes: The “Genoa” is one of Royal’s new villa floor plans. Its thoughtful design offers an open floor plan and the amenities you desire. This ranch includes a full-sized three car garage and a covered deck that looks into a beautiful back yard area. This home is a Certified High Performance Home (CHPH).

You will love Royal’s high-end quality, from custom cabinets, to Royal’s custom designed trim. This villa has eleven foot ceiling in the great room area. The gourmet kitchen has custom cabinets, an island, a large walk-in-pantry, as well as Bosch appliances and granite countertops. Royal’s mixture of birch & quartz enhance the quality and beauty of this home. The master bath offers a walk-in shower, whirlpool tub, double vanities and a walk-in closet. The lower level is finished with the same Royal quality with two finished bedrooms, a 3/4 bath and a recreation room with a wet bar.

Royal’s homes offer quality and standard features not often included with other builders. Once you get over the “Bling only” in other homes and start looking at Royal’s quality as well as their other standard features, you will see what Royal has to offer. Also important, Royal has its own home warranty that can’t be beat. When you look at other new homes, Royal’s homes are the ones you will want to come back to. **Experience, Design, Energy Efficiency, High Quality, and the best Warranty program around.** You can ask any of our hundreds of satisfied customers.



SALES BY:

John Greguska
402-612-0594

NP Dodge Real Estate

PRICE OF ENTRY:

\$459,900

(Lot Included)

FINISHED SQ. FT.:

3,008

22

COPPERFIELDS

19810 Nina Street | Elkhorn



www.woodlandhomesomaha.com

SALES BY:

Terry Stork
402-657-2067

CBSHome Real Estate

PRICE OF ENTRY:

\$371,755

(Lot Included)

FINISHED SQ. FT.:

3,129

THE ASHLEY

The "Ashley" Ranch Villa by Woodland Homes, Inc. provides homeowners with an easy living lifestyle. The open floor plan has over 3100 fsf – 4 Bedrooms – 3 Bath Locations – Drop Zone – Main Floor Laundry. The kitchen features a sizeable walk-in pantry, island, wood floor, as well as access from the dining area to the covered deck. Master Bedroom walk-in closet, MBA double sinks and a large snail shower. The finished lower level Rec Room includes a corner fireplace and bar area. Bedrooms #3 and #4 each have walk-in closets. Lower Level Storage Room. 3-Car Garage. Woodland Homes quality and workmanship throughout.



PRESENTING SPONSOR



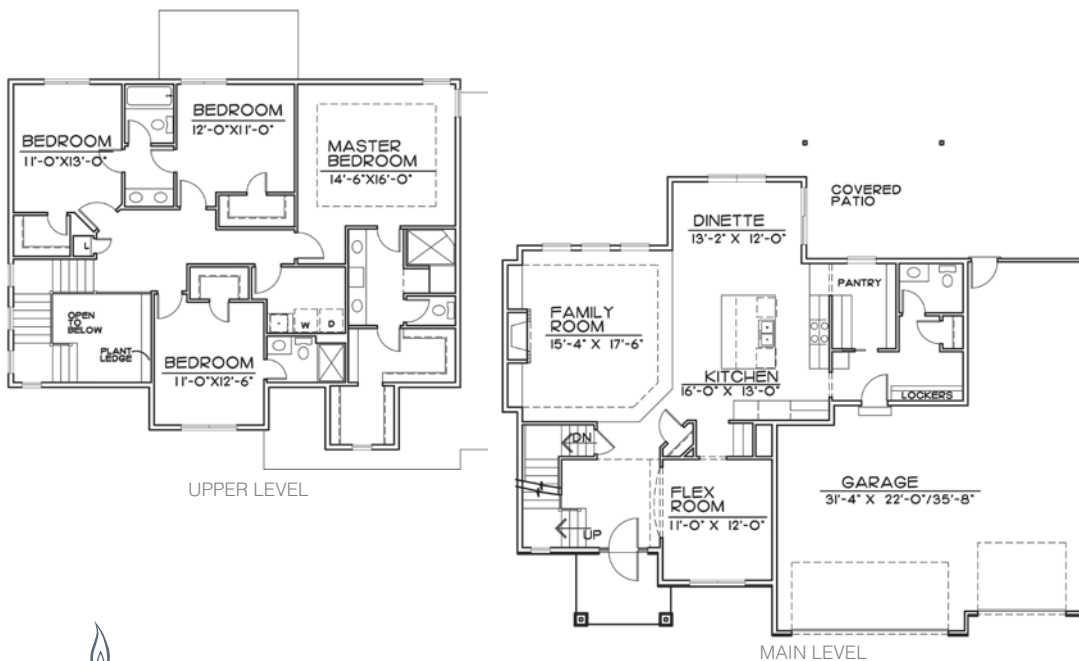


LANSING

Nelson Builders presents the Lansing Two Story Plan. The family room features a stone fireplace, floating shelves, and built in cabinetry. Entertaining will be a breeze with a large kitchen island, walk-in pantry, G.E. appliances, unique light fixtures, and tons of space. The master suite features a large walk-in shower, double vanity, and spacious walk-in closet. Each additional bedroom has access to a bathroom- including a Jack and Jill bath on the second floor.



www.nelsonbuildersomaha.com



SALES BY:

Marie Otis
402-670-8775
CBSHome Real Estate

PRICE OF ENTRY:

\$374,250
(Lot Included)

FINISHED SQ. FT.:

2,672

24

COVENTRY RIDGE

6703 S. 209th Street | Omaha



(Just North of 209th & Harrison)



www.sierrahomesomaha.com

DOMINICA

Four bedroom open concept ranch features modern finishes throughout. Oversized 3 car garage and covered patio. Main floor host a stunning large kitchen island with skylight and quartz countertops, slate appliances and a huge hidden walk-in pantry! LED light trays everywhere to create a blissful ambience at night. Laundry room is connected to the master bath which includes a 2 person walk-in shower. Finished basement boasts an impressive industrial brick wet bar, entertaining space, an oversized guest bedroom with full bath and a massive walk-in closet still leaving room for that home theater you have always desired. Linear stone and tile fireplaces on both floors. This home is truly a showstopper!

SALES BY:

TJ Scott
402-996-0001
 Scott Real Estate

PRICE OF ENTRY:

\$389,900

(Lot Included)

FINISHED SQ. FT.:

3,080



REMINGTON RIDGE
8140 S. 193rd Avenue | Gretna

25



This stunning and affordable new 1.5 story floor plan by Dreamscape Homes is truly a must to see. Very sharp front elevation, nice dining room, a must see kitchen with a stone/waterfall quartz island, glass Pantry door, custom birch cabinets, full stone linear fireplace in great room, a must see master bedroom with barn door and a huge walk-in shower as well as floating vanities with under counter lighting. This home features a great second level with 3 bedrooms, and full bathroom and an open sitting/work area. This home is also set up with a very practical drop zone in the mud room. And with numerous more upgrades and ideas, this Dreamscape Home is a must to stop by!



dreamscapehome.net

SALES BY:

Bob Quartoroli
402-680-0886

Sven Sanoner
402-669-5933

NP Dodge Real Estate

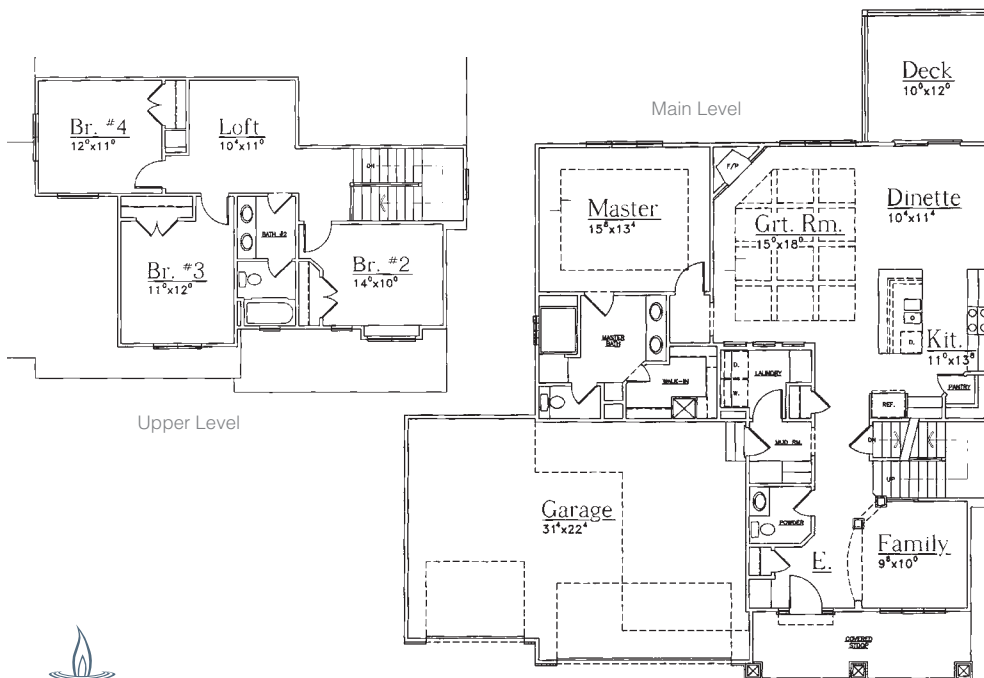
PRICE OF ENTRY:

\$258,500

(Lot Not Included)

FINISHED SQ. FT.:

2,200



PRESENTING SPONSOR

26

PALISADES

9615 S. 173rd Street | Omaha



TELLURIDE

Introducing H3 Custom Homes! Open for admiration, and once inside, see top notch construction offering an open floor plan with soaring ceilings & custom finishes. The kitchen will astound you with custom cabinets, walk-in pantry, & custom furniture piece island. The master suite is accentuated with tray ceiling with crown molding & spa-inspired master bath. Other custom features: granite countertops, tile floors, custom trim in main living areas, oversized bedrooms, and drop zone.

H3 Custom Homes is a family-owned business with over 40 years of combined construction business. The builders have established trade & business relationships resulting in a quality home building process. They have a lifelong passion for construction which enables them to build their client's dream home.

SALES BY:

Kristen Wehner Jacobsen
402-672-7701
NP Dodge Real Estate

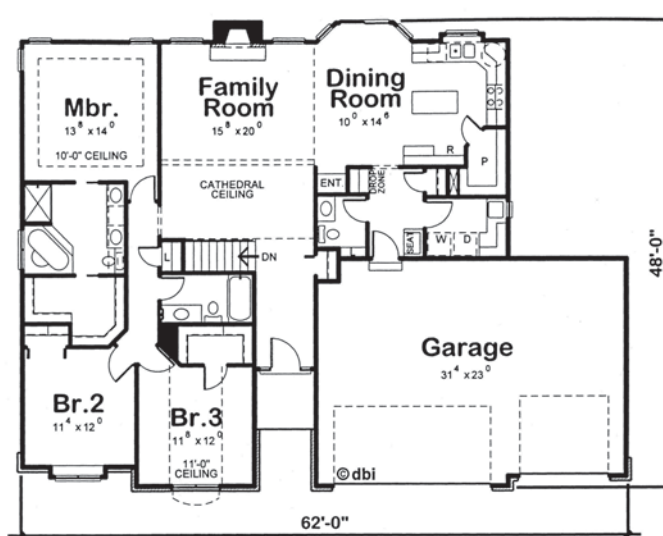
PRICE OF ENTRY:

\$356,000

(Lot Included)

FINISHED SQ. FT.:

1,889



PRESENTING SPONSOR





THE VENETO RANCH

Pine Crest Homes Veneto Ranch!

This exquisite and totally functional gem shines bright with its wide open floor plan that features quartz counters, engineered hardwood floors, birch cabinets, finished lower level, 9' ceilings, walk-in pantry and much more! The master suite includes an impressive oversized walk-in closet and spa-like master bath with walk-in tile shower.



www.pinecresthomesomaha.com



Over 30 years of building experience, combined with the showcase amenities you want, is sure to impress!



SALES BY:

Megan Owens
402-689-4984

Berkshire Hathaway
HomeServices
Ambassador Real Estate

PRICE OF ENTRY:

\$344,475

(Lot Included)

FINISHED SQ. FT.:

2,992



Aspen CREEK

LOCATED ON THE NORTHEAST CORNER OF 192ND STREET AND HWY 370.

Homes from \$300,000

New Gretna Elementary and Middle School

Convenient Interstate Access

Close to Shopping



PineCrestHomesOmaha.com



WoodlandHomesOmaha.com

BROUGHT TO YOU BY BHI DEVELOPMENT

402-592-6942



CHATEAU

The "Chateau" by M. J. Design/Build, Inc. features 4 bedrooms, 4 bathrooms, including a Jack and Jill bath upstairs, and a bonus area off the large upstairs laundry that can be used in a multitude of ways. A "hidden" flex room that can be used as a toy room, office, dining room, or guest room. This lovely 2 story home offers so many choices *and* "affordable quality" at its best. We invite you to check out the many styles of our total custom homes at www.mjdesignbuild.com




DESIGN/BUILD INC
www.mjdesignbuild.com

SALES BY:

Duane Safarik
402-669-6444

NP Dodge
Real Estate

PRICE OF ENTRY:

\$267,200
(Lot Not Included)

FINISHED SQ. FT.:

2,378

29

ASPEN CREEK

19113 Hampton Drive | Gretna



www.nelsonbuildersomaha.com

SALES BY:

Marie Otis
402-670-8775

CBSHome Real Estate

PRICE OF ENTRY:

\$378,984

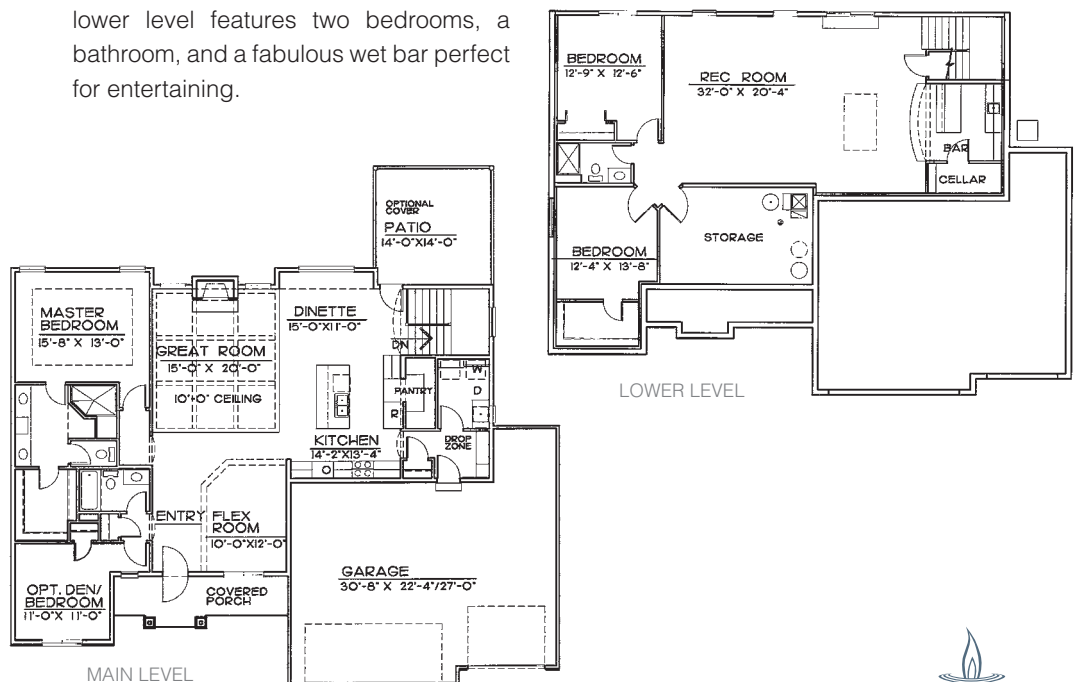
(Lot Included)

FINISHED SQ. FT.:

3,174

MONTGOMERY

Nelson Builders presents the Montgomery Ranch Plan. This home offers 3,100 sq.ft, 4 beds, 3 baths, and a 3 car garage. Entertaining will come with ease in the spacious kitchen that features granite, Stainless Steel Appliances, a gas cooktop, stainless steel hood, beautiful tile, and large walk-in pantry. Family friendly drop-zone and main floor laundry. The spacious great room is complete with a stone fireplace, large windows, and a fantastic ceiling detail. The large master suite is sure to impress with walk-in shower, double vanity, and spacious walk-in closet. The finished walk-out lower level features two bedrooms, a bathroom, and a fabulous wet bar perfect for entertaining.



PRESENTING SPONSOR





1962 RANCH

SHOWCASE HOMES presents this stunning transitional ranch floor plan featuring:

- Over 3500 square feet
- 5 Bedrooms and 3 Bathrooms
- Master bath with whirlpool and walk in shower
- Kitchen with double ovens, gas cooktop and walk in pantry
- Maple wood floors
- Covered Patio
- Finished lower level with wet bar
- Granite throughout
- Numerous ceiling treatments
- Oversized garage

Homes under construction throughout the Metro area.



www.showcasehomesomaha.com

SALES BY:

Clinton Boyd
402-290-5043

Liz Eggers
402-499-5005

Showcase Homes
Real Estate

PRICE OF ENTRY:

\$395,000

(Lot Included)

FINISHED SQ. FT.:

3,552



31

ASPEN CREEK

10634 S. 188th Avenue | Gretna



www.silverstonebuildingomaha.com

SALES BY:

Ben Proctor
402-965-1848

Berkshire Hathaway
HomesServices
Ambassador Real Estate

PRICE OF ENTRY:

\$423,350

(Lot Included)

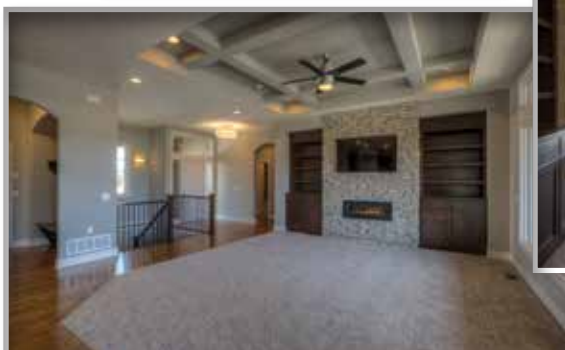
FINISHED SQ. FT.:

3,242

RANCH 1881

Silverstone Building Co. is a local home building company delivering exceptional quality and lasting detail. Work directly with a builder with over 25 years of industry experience to taylor a home a perfectly fitting your desires for budget, location, and lifestyle. Silverstone Building Co. is building distinguished homes throughout the Omaha metropolitan area's newest and most popular subdivisions with prices in the mid \$300'000's and upward.

Ranch 1881 in Aspen Creek showcases Silverstone Building Co.'s attractive finishes including quarter sawn solid oak floors, quartz kitchen tops, walk-in pantry, coffered ceilings, stacked stone, and more. Don't miss the smart creative details like a coffee bar with dedicated water line in the pantry or the perfect mud room and drop zone. Make sure to take note of the lasting quality materials and components like oversized aluminum clad Pella windows, Lennox HVAC system, and Timbertech decking to pinpoint a few.



PRESENTING SPONSOR





TUSCAN 2276 PLAN

Trademark Homes, Inc. is a custom builder that prides themselves in customer satisfaction and their attention to detail shows in every single home they build. Our new floor plan is an open plan that is warm and inviting. Its spacious eat in kitchen includes a hidden walk-in pantry, island, custom birch cabinets, granite counter tops, and decorative tile backsplash. The living room has a tile fireplace and three large windows for a great view. On the main level you will also find an office with French doors, drop zone area with a bench and hooks. The second level includes a master suite, 3 bedrooms and a second floor laundry. Come check out the detail and finishes you will not be disappointed!!



www.trademarkomaha.com

SALES BY:

Angie Epenbaugh
402-578-8168

RE/MAX Professionals

PRICE OF ENTRY:

\$330,000

(Lot Included)

FINISHED SQ. FT.:

2,276



CHOOSE 100% HARDIE™

*for authentic character and
uncompromising performance*

**AND A 10-YEAR SERVICE COMMITMENT THAT
COVERS 100% OF LABOR AND MATERIAL COSTS.**

No deductible. No middlemen. No hassle.

We are so confident in our 100% HARDIE exterior, that if you encounter any siding or trim issues during the first 10 years, simply call James Hardie directly. We'll come to your home and correct the problem at no cost to you. It's another reason to insist on America's #1 brand of siding.

**Ask your builder for more details
or visit choosehardie.com**



LEGACYHOMES

LegacyHomesOmaha.com

(402) 884-3202 x100

*Coverage is for siding or trim issues related to cladding installation or manufacturing defects.

All other terms, conditions and exclusions of James Hardie standard product warranties apply. James Hardie assumes no responsibility for any non-cladding related problems.

© 2016 James Hardie Building Products Inc. All Rights Reserved. TM, SM, and ® denote trademarks or registered trademarks of James Hardie Technology Limited. The  is a registered trademark of James Hardie Technology Limited. AD1609 03/16



JamesHardie

Siding | Trim



CRAFTSMAN CABERNET II

Come see the very popular Cabernet II with a country front elevation. Woodland Homes has designed 6 different front elevations to choose from. Custom Birch Cabinets, Wood Floors, Painted Woodwork, and Quartz Countertops in both kitchen and baths are included as standard features. This home has a 3 Car-Plus garage with 5 bedrooms, 4 bathrooms, and covered front & rear porch. Located in Aspen Creek – this area has 2 new Gretna schools under construction, and close access to Interstate 80. Built by Woodland Homes, we offer 7 standard ranch and 6 two-story homes. To look at for ideas – please contact Ken Murray at 402-690-6572.



www.woodlandhomesomaha.com

SALES BY:

Ken Murray
402-690-6572
Nebraska Realty

PRICE OF ENTRY:

\$417,932
(Lot Included)

FINISHED SQ. FT.:

3,106

34

TIBURON RIDGE - VILLAS ON THE RIDGE

11024 S. 175th Avenue | Omaha



KELLAN

Brand New Model Home ~ Beautiful ranch villa in fabulous new Tiburon Ridge neighborhood. Ten foot ceilings, deco stone fireplace, birch cabinetry, stainless steel appliances, granite counters, oak flooring, rain glass french doors, huge tiled walk in master bath shower and a garden tub. Open floor plan with split bedrooms, drop zone, walk-in pantry with motion lighting & more. Must see to believe!



www.bestconstructionomaha.com

SALES BY:

Tammy Nicola ~ 402-708-6175

Charlotte Smith ~ 402-677-9279

Sherry Stinson ~ 402-983-7114

CBSHome Real Estate

PRICE OF ENTRY:

\$342,800

(Lot Included)

FINISHED SQ. FT.:

1,777

PRESENTING SPONSOR





THE ZOEY

Welcome to Nathan Homes' new creation! Refreshing in its simplicity, this rustic home with a modern twist has 5 bedroom and 3 baths. Interior features exposed beams, reclaimed barn wood, stone walls and is open and full of light. Bringing the outside in, the finished walkout basement entertains with an incredible theatre room, spacious floor plan, serene view of trees and luxury details throughout! Nathan Homes provides full design services and hands on care. This home is truly unforgettable. Prepare to fall in love!



www.nathanhomesomaha.com



SALES BY:

Sallie Elliott
402-630-5953

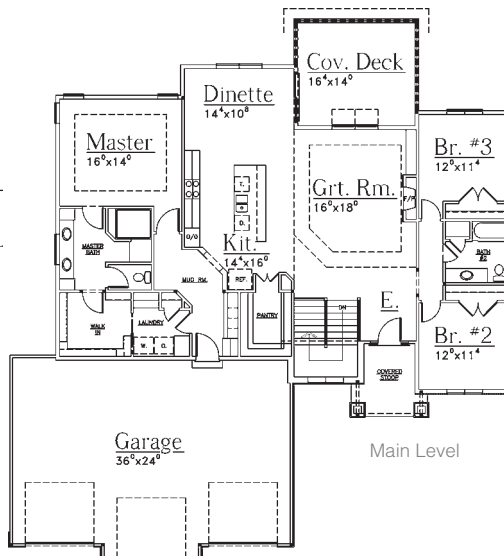
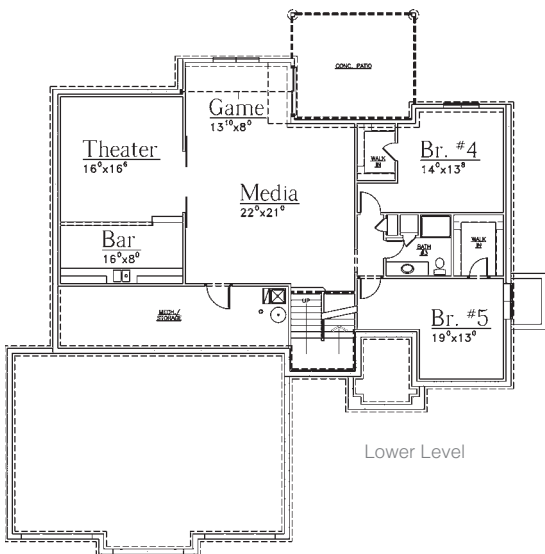
Berkshire Hathaway
Home Services
Ambassador Real Estate

PRICE OF ENTRY:

\$574,900
(Lot Included)

FINISHED SQ. FT.:

3,807



PRESENTING SPONSOR

36

NORTH SHORE

12501 Longshore Circle | Papillion



Photo of similar AI Belt Custom Home



www.AIBeltCustomHomes.com

2777 PLAN

Welcome to the AI Belt Custom Homes most popular two story plan, the 2777. This stunning home offers 4 bedrooms, 4 bathrooms, and a 3 car garage. Standard features include Pella aluminum clad windows, super insulation practices and all homes are Certified High Performance Homes. Custom birch cabinets, granite throughout, oversized painted trim, stone fireplace, open floor plan, and a covered patio. High quality finishes including a walk-in tile shower, whirlpool tub, and double vanities in the spacious master suite. The home has a guest suite with full bath and a Jack and Jill bath for the other bedrooms.

AI Belt Custom Homes is a custom home builder. Let us help design and build your dream home. AI builds throughout the metro on your lot or ours. www.AIBeltCustomHomes.com

SALES BY:

Brian Wilson
402-850-0731

CBSHome Real Estate

PRICE OF ENTRY:

\$389,900

(Lot Included)

FINISHED SQ. FT.:

2,777



PRESENTING SPONSOR





THE HAVEN

Welcome to Carson Custom Homes ranch, The Haven, this west-facing open floor plan offers 4 bedrooms, 3 baths and a 4 car garage! Over 2900 FSF of high quality finishes throughout. Entry opens to den and open kitchen featuring wood floors, custom cabinets, ss appliances, granite counters and a huge walk-in pantry. Finished lower level with 4th bedroom, large bathroom, pool table area and large rec room with custom birch and granite wet bar. Three-panel painted doors and oversized trim. Covered patio off the dinette area and a covered front porch. Carson Custom Homes would love to build your dream home. Carson has a large lot selection in Sarpy County.



402 332-5470

carsoncustomhomesomaha.com

SALES BY:

Jenn Haeg
402-885-3145
Nebraska Realty

BASE PRICE OF ENTRY:

\$330,900

(Lot Included)

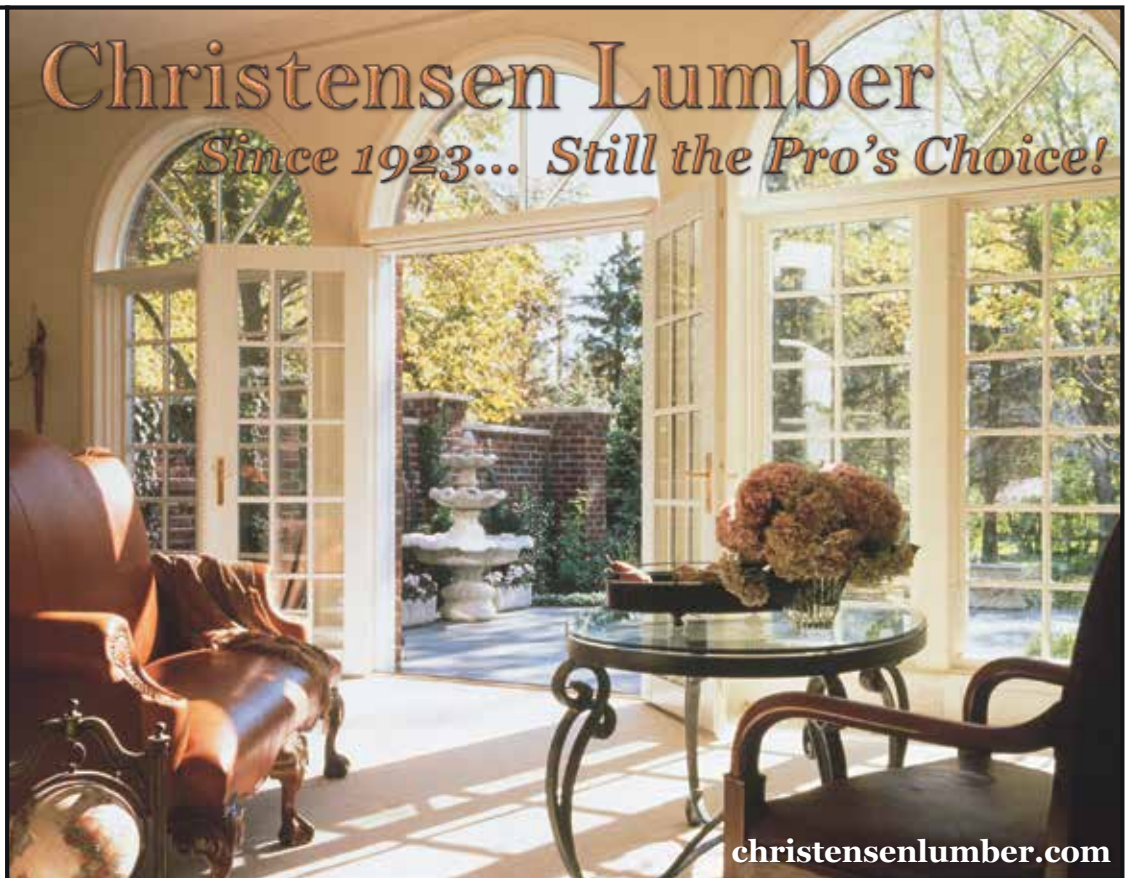
FINISHED SQ. FT.:

2,920



Christensen Lumber

Since 1923... Still the Pro's Choice!



christensenlumber.com

Stop in our showroom
just west of The
MARK!

21018 Cumberland Dr.

Elkhorn NE 68022

402-758-0792



Quality • Value • Service • Excellence



Complete line of:
Wood Windows & Patio Doors
Clad Windows & Patio Doors
Vinyl Windows & Patio Doors
Specialty Windows
Storm Doors & Windows • Louvers
Sky Lights-Wasco®/Solatube®

Available Features:

- Snug Fitting Designs • Low-E Glass
- Custom Sizing • Easy Cleaning
- Service • Repair Available

7301 Main Street • Ralston, NE

402-592-2850



- Oak-Maple-Alder Pre-Hung Doors
- Wide Variety of Molded Panel Doors
- Masonite Steel / Fiberglass Doors
- Decorative Door Lights
- Wood-Vinyl & Clad Exterior Door Frames
- Oak-Maple-Birch-MDF Mouldings
- Oak-Maple-Metal Stair Parts
- Kwikset Handles & Lock Sets
- Plywood-Wood & Metal Shelving

5802 So. 72nd • Ralston, NE

402-331-0377

The Genuine. The Original.



OVERHEAD DOOR COMPANY OF OMAHA

*Don't be fooled,
look for the "Overhead Door" Ribbon!*

*Beautify your garage with a new
raised panel steel door.
The look and beauty of wood with the
security and low maintenance of steel.
In standard and custom door widths.*

Garage Door Openers with Remote
Ask About Installation

**Free Estimates • Call Today
24-Hour Emergency Service
ONE CALL DOES IT ALL!**

1222 Royal Dr. • Papillion, NE

402-331-0526

www.aabuildingcomponents.com



THE GRYPHON

Amazing home on high, slightly lot. Lots of windows, front porch and covered back deck with views of the lake. Kitchen features a large island and huge walk-in pantry. Wonderful drop zone for your active family and open main floor for entertaining. The 3 car garage with 4th car tandem garage is perfect for storing your toys, since you will be only 2 blocks from the Prairie Queen Rec Area. The 2nd level features 4 big bedrooms, 3 bathrooms, and large laundry room with sink. The owner's retreat has a spacious bathroom with walk-in shower, corner whirlpool tub, two vanities & linen cabinet. The unfinished walk-out basement has lots of potential for finishing. On top of that, this home is better insulated than average and has a 95% efficient Trane furnace. Please visit and experience firsthand the high quality construction of this beautiful Griffin home.



SALES BY:

Mitch Griffin
402-659-8568

CBSHome
Real Estate

PRICE OF ENTRY:

\$409,950
(Lot Included)

FINISHED SQ. FT.:

2,950



timberlinehomesomaha.com

SALES BY:

Todd Young
402-657-5667

Brenda Young
402-677-0364

Berkshire Hathaway HomeServices
Ambassador Real Estate

PRICE OF ENTRY:

\$427,950

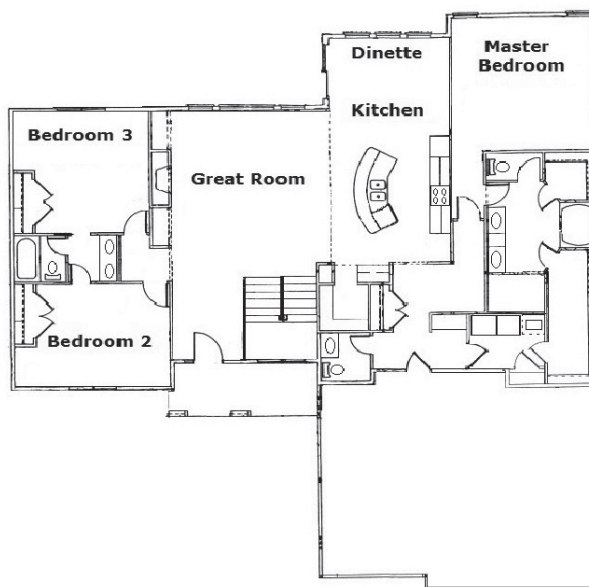
(Lot Included)

FINISHED SQ. FT.:

3,357

PRESTON

This split bedroom plan offers lots of windows, hickory floors, and a stone to ceiling linear fireplace. The gourmet kitchen gives you stainless steel appliances and a gas cooktop, with a large walk-in pantry. This 5 bedroom home offers you a finished basement with wet bar for entertaining. This home sits within 3 blocks from grade school, lake, and Werner Park in the beautiful North Shore subdivision. If you are looking to build your dream home call on Team Young to walk you through the process. Timberline Homes is your affordable custom builder with over 25 years of experience.



PRESENTING SPONSOR





THE GREYSTONE

Widhalm Custom Homes, Inc presents the Greystone. Prepare to be WOWED by the quality of construction, high end finishes, and all the bells and whistles this incredible, open, and efficient ranch home has to offer. The moment you enter your breath will be taken away by the natural light with amazing views, custom finishes, and rustic / modern details that surround you. We are currently building throughout the metro area and have several lots and plans to choose from. If you are looking for a unique, truly custom home and an informative and interactive building experience please consider Widhalm Custom Homes, Inc as your next home builder.

WIDHALM CUSTOM HOMES INC.

www.widhalmcustomhomes.com



SALES BY:

Michael Maley
402-981-7400

CBSHome Real Estate

PRICE OF ENTRY:

\$459,900

(Lot Included)

FINISHED SQ. FT.:

3,632

41

NORTH SHORE

10354 S. 124th Street | Papillion



Woodland Homes



www.woodlandhomesomaha.com

LILY II

Woodland Homes presents, The Lily II, a contemporary style floor plan in the hottest new neighborhood, North Shore. 9' ceilings are throughout main floor. Kitchen has all of today's amenities including quartz counters, large walk through pantry, oversized dinette area and so much more with an office space just off the kitchen. Master bedroom features 2 closets and a walk-in shower. The 2nd floor features a loft area, convenient laundry room and 3 bathrooms, including one Jack and Jill style. Oversized 3 car garage. The North Shore neighborhood hosts a local elementary school and all the amenities of the Prairie Queen Recreation Lake. You will not be disappointed at the quality of construction Woodland Homes has to offer.

SALES BY:

Jeff Elsberry
402-690-0900

CBSHome Real Estate

PRICE OF ENTRY:

\$429,950

(Lot Included)

FINISHED SQ. FT.:

2,933



Interior photos of similar Woodland Homes.



PRESENTING SPONSOR





THE PRESTWICK

A Premier Home from the Birchwood Homes' Estate Collection. This large ranch home features a Luxe Vintage design incorporating quality materials and craftsmanship.

The high end spectacular Kitchen features designer Knotty Alder Cabinets, Gourmet appliances, and a pantry that is outstanding. A few special materials to view-Quartz, Organic Flooring, natural stone, plus fine moldings and doors. The large Master suite, containing 2 closets, 12' ceilings, incredible shower and vintage inspired soaking tub is expertly designed. The English brick wrapped bar in the basement plus bourbon wine closet is perfect for entertaining. This home has larger bedrooms than typically seen with plenty of closet space. Our soaring ceilings and impressive window size makes this home a happy place. Every room features an architectural attribute that is sure to impress.



SALES BY:

Susan Hancock
402-215-7700

NP Dodge Real Estate

PRICE OF ENTRY:

\$874,950

(Lot Included)

FINISHED SQ. FT.:

4,612



Land Surveying

- Elevation Certificates
- FEMA Letters
- Administrative Subdivisions
- ALTA/NSPS Land Title Surveys
- Construction Staking
- Lot Surveys
- Percolation Testing
- Preliminary and Final Plats
- Topographic Surveys

thompson, dresden & dorner, inc.



402.330.8860 Omaha

605.951.0886 Sioux Falls

www.td2co.com

FIREPLACE STONE & PATIO

Inspired Living, Inside and Out

FireplaceStonePatio.com

Modern Flames, Traditional Warmth

Omaha's largest must-see showroom featuring life-size displays of fireplaces and stone for new construction or remodel projects. Integrity and expertise make us your partner of choice.

402.884.8600 | 13709 Industrial Rd. Omaha, NE 68137

REPLACEMENT WINDOWS AND DOORS PROFESSIONALLY INSTALLED

Energy Savings. Enduring Value.

Marvin® windows and doors are beautiful, durable and energy efficient. By replacing your old windows and doors you'll discover new-found comfort in your home while adding lasting value.



Built around you.®

©2012 Marvin Windows and Doors. All rights reserved. ®Registered trademark of Marvin Windows and Doors. ENERGY STAR® and the ENERGY STAR certification mark are registered U.S. marks.

Marvin Windows and Doors offers thousands of shapes and sizes, and **The Window & Door Store** will help you find the style that's a perfect match for your home and your budget. Marvin windows and doors aren't just beautiful, and exquisitely crafted - they can help you save energy and add enduring value to your home.



The Window & Door Store
13819 Industrial Road
Omaha, NE 68137
402-333-4321





THE CABERNET ESTATE

This home has lovely architectural details of a beautifully designed Arts and Crafts facade. Inside you will find 10' ceilings on the main floor, large windows, and designer wood flooring throughout. This home's perfect kitchen boasts high-end painted and stained custom cabinetry with a massive 5' x 9' island, fine chef-quality appliances, unique large and bright walk-in pantry with 2 entrances, huge dinette area with vaulted ceilings, and large mud room. This quality built home also features convenient main floor office, oversized Master Bedroom Suite with sitting area and large "Spa" bath with huge closet. 2nd Floor Laundry location and all bedrooms are "in suite". See the oversized 4 car garage with tall ceilings for plenty of storage. Enjoy the designer landscaping, covered deck with maintenance free decking. Come see this New Luxury Neighborhood in Papillion and why we have been building homes since 1978.



SALES BY:

Susan Hancock
402-215-7700

NP Dodge Real Estate

PRICE OF ENTRY:

\$644,950
(Lot Included)

FINISHED SQ. FT.:

3,530

44

CIMARRON WOODS

9901 Emiline Street | Omaha



Woodland Homes

www.woodlandhomesomaha.com

SALES BY:

Traci Vacanti
402-672-9071

CBSHome Real Estate

PRICE OF ENTRY:

\$372,470

(Lot Included)

FINISHED SQ. FT.:

2,868

WILLIAMSBURG II

Come home to a freshly mowed lawn. Wake up on a snowy morning to an already shoveled driveway. Villa living offers freedom to travel without the worry of lawn and snow maintenance. Woodland Homes is one of the top villa builders in the Omaha metro area. Cimarron Woods Villas has WKO, daylight and flat lots available. A few that back trees, and a park. This beautiful villa is designed to be open, with walls of windows. Wood floors in the great room, kitchen, entry & dinette.



Quartz countertops with birch cabinetry in the kitchen & bathrooms. There is a low maintenance, covered, composite deck. The WKO lower level is finished with an additional stone fireplace, 2 bedrooms, a 3/4 bath, and huge rec room with a wet bar.



PRESENTING SPONSOR



GRANITE FALLS 45

17010 Laramie Street | Papillion



SAPPHIRE

Richland Homes presents the Beautiful Open Floor Plan “Sapphire Ranch.” Offering over 2,800 Sq Ft, with 5 bedrooms under \$270K. The Kitchen in this home is GORGEOUS! Standards included in this home: White Cabinets, with White Quartz Kitchen Counter, Upgraded Stone to ceiling fireplace, Standard Wood Flooring in selected areas. This home makes you feel right at home. Contemporary Lighting Package, Square Sinks, & Standard Lighting Package includes controlling lighting with a remote or from your phone! Standard USB outlets in select locations.

Make sure to check out “The Sapphire Ranch” Youtube video tour as well.



www.buildwithrichland.com

SALES BY:

Jennifer Torczon
402-881-1834

Berkshire Hathaway
HomesServices
Ambassador Real Estate

PRICE OF ENTRY:

\$268,420

(Lot Included)

FINISHED SQ. FT.:

2,852



46

GRANITE FALLS

17014 Laramie Street | Papillion



www.buildwithrichland.com

SALES BY:

**Berkshire Hathaway
HomesServices
Ambassador Real Estate**

**Jennifer Torczon
402-881-1834**

PRICE OF ENTRY:

\$257,255

(Lot Included)

FINISHED SQ. FT.:

2,214

DIAMOND 3

The Diamond 3 by Richland Homes is the perfect 4 bedroom home for raising a family. Offering a Front Flex Room that can be made into an Office with French Doors, or a perfect Playroom for the Kids. The kitchen features a Standard Quartz Counter Top & Stunning Cabinetry. Wrought Iron Spindles, and a Spacious Drop Zone with Bench & Shelves. The upstairs Master Bathroom shower is a MUST SEE! Large Master Bedroom & Closet, plus this plan offers a loft option as well. Stop in & ask how you can build your Richland Homes today! We are building in several locations including Southern Pines, Granite Falls, Castle Creek, & many more!



PRESENTING SPONSOR



VILLAS AT CREEKSIDE

914 Crest Drive | Papillion

47



1485 RANCH

This great walkout ranch by SUDBECK HOMES boasts three bedrooms and two baths. You are instantly impressed with the wall of windows gracing the rear 10' high ceilings in the main living areas. Tremendous views from the kitchen sink are without question one of the top features of this home. Surprising details including a built-in desk, 11' office ceiling, framed pantry, double bowl raised master vanity, walk around island, and windows galore will amaze you with every turn. It can all be summed up in one word – WOW.



www.sudbeckhomes.com

SALES BY:

Rick Kanne
402-670-6644

CBSHome Real Estate

PRICE OF ENTRY:

\$244,500

(Lot Included)

FINISHED SQ. FT.:

1,485



Natural gas: Making meals memorable



An empty propane bottle and a raw steak make for a miserable night.



A natural gas grill means a great night and great food.

Black Hills Energy



Millard Lumber offers a hands-on showroom featuring the 400 Series by Andersen. The 400 Series offers performance and style to meet all your needs.

Andersen® The most trusted name in windows and doors.

12900 I Street | Omaha, NE | M-F 7AM-6PM | Sat 8AM-3PM
www.millardlumber.com | 402.896.2800

*Andersen® and the AW logo are registered trademarks of Andersen Corporation.

